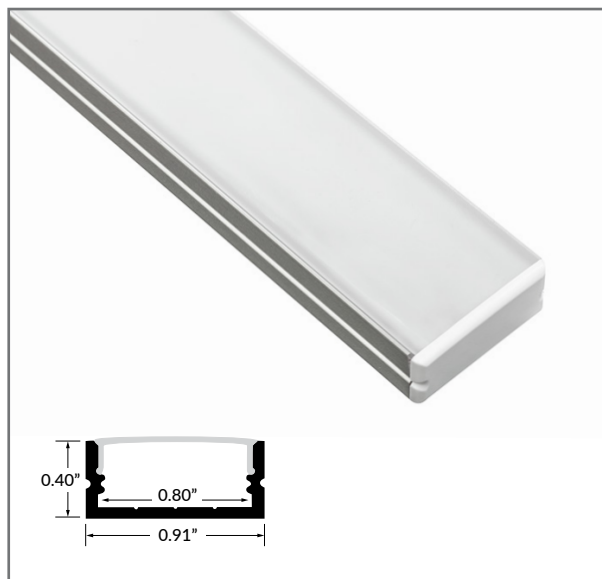




SPECIFIER \_\_\_\_\_  
 PROJECT \_\_\_\_\_  
 DATE \_\_\_\_\_

# WIDE EXTRUSION



## QUICK SPECIFICATIONS

BODY MATERIAL	Double anodized aluminum
LENS MATERIAL	Polycarbonate
MAX. LED TAPE WIDTH	Accommodates tapes up to 0.8" wide
DIMENSIONS	0.91" W x 0.40" H

### FINISH

Standard finish is silver anodized.

Custom finishes available for any RAL #.  
Additional price and MOQ may apply.

### ACCESSORIES

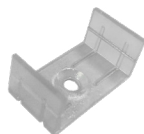
Four (4) mounting clips included for each 48" or 94" section. Four (4) plastic endcaps included. Additional mounting clips and endcaps sold separately.

## PART NUMBER BUILDER / ORDERING GUIDE

Example part number: LLI-XS-WID-SA-F-48IN

<b>SERIES</b>	<b>FINISH</b>	<b>LENS</b>	<b>LENGTH</b>
<input type="text" value="LLI-XS-WID"/>	- <input type="text" value="SA"/>	- <input type="text"/>	- <input type="text"/>
	<b>SA</b> Silver Anodized	<b>F</b> Frosted <b>C</b> Clear	(enter custom length in inches, up to 94") <b>48IN</b> 48" section <b>94IN</b> 94" section

## ACCESSORIES



**MOUNTING CLIP**  
4 mounting clips included;  
extra clips sold separately

Dimensions:  
1.03" W x 0.47" H x 0.55" L



**ADJUSTABLE MOUNTING CLIP**  
Sold separately

Dimensions:  
1.42" W 0.89" H x 0.98" D



**ENDCAP**  
4 endcaps included; extra  
endcaps sold separately

(solid endcap)

(endcap with hole)