



# INSTALLATION INSTRUCTIONS WALL MOUNT DMX RGB(W) TOUCH CONTROLS

LLI-C-CTRL-DMX-RGBW-TP



\*\*DANGER: Prior to installation, disconnect power at the source.\*\*

Make sure you have all components listed below:

- LED tape
- Connectors
- Extrusion/Lens
- Controls
- Non-dimming power supply

# INSTALLATION INSTRUCTIONS

## WALL MOUNTED DMX RGB(W) TOUCH CONTROLS

Please read all steps before beginning the installation.

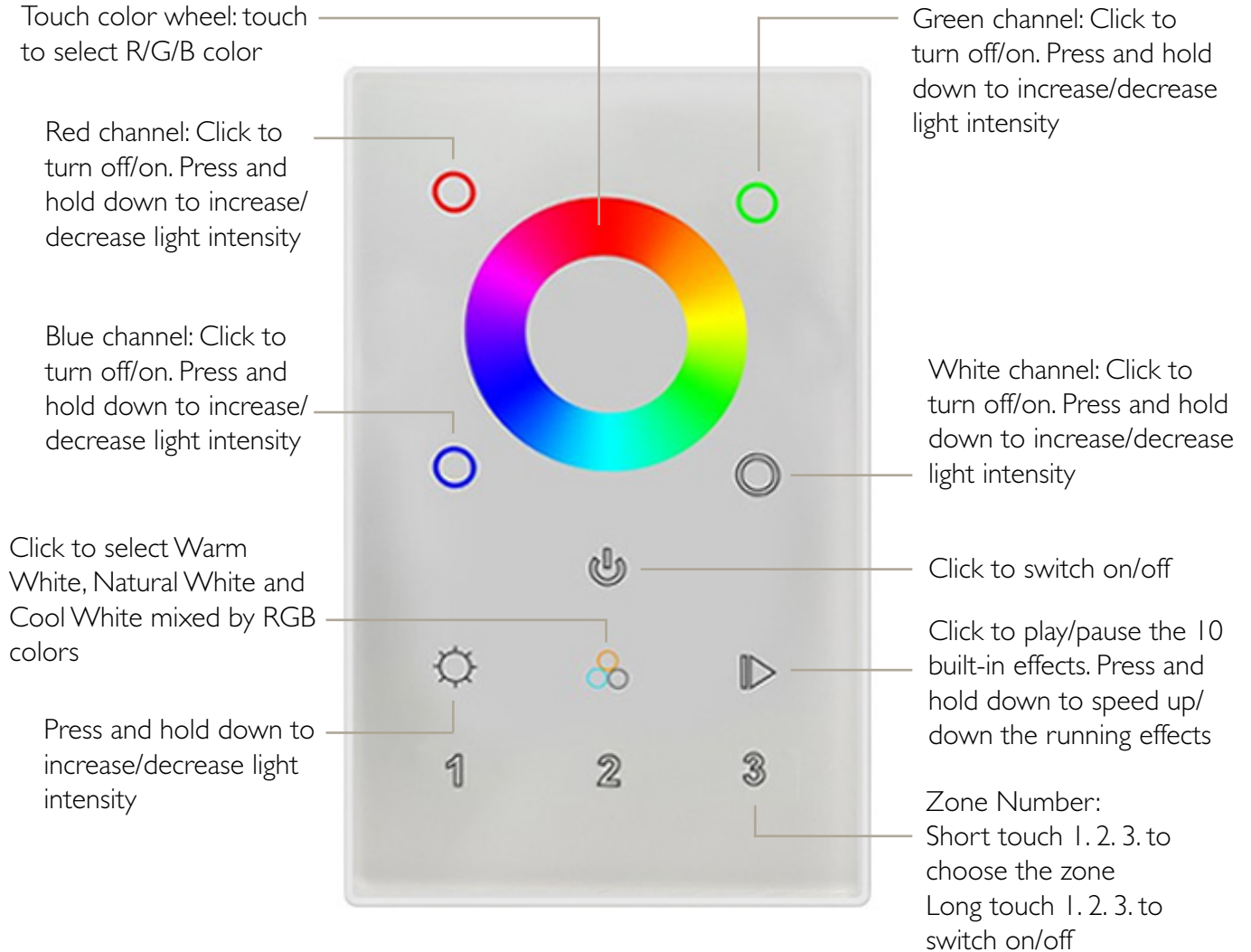
- **WARNING:** These products may represent a potential shock or fire hazard if improperly installed or attached in any way. Products should be installed in accordance with these instructions, local electrical codes and the National Electric Code (NEC).
- Use only with 12V or 24V non-dimmable hardwire power supply. Factory warranty will be void if used otherwise.
- Do not use if there is any damage to the unit or to the wiring/insulation. Inspect periodically.
- Ensure wires are in compliance with local electrical codes.
- Nexus Pro Controllers are intended for indoor use in dry locations and not suitable for outdoor applications.
- Ensure proper gauge wires are installed between power supplies, controls and LED lighting to avoid voltage drop.
- Ambient temperature should not exceed 110°F or 50°C.
- Recommended load is 80% for optimal performance and lifespan.

# INSTALLATION INSTRUCTIONS

## WALL MOUNTED DMX RGB(W) TOUCH CONTROLS

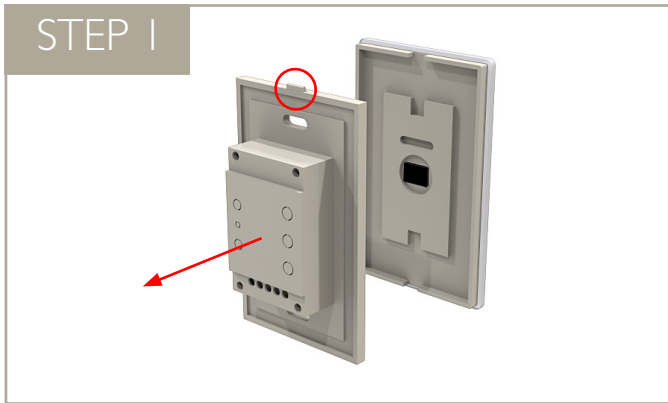
### LLI-C-CRTL-RGBW-TP

NOTE: This remote controls 4 zones/receivers.  
Each receiver can be paired with a maximum of 8 controllers.



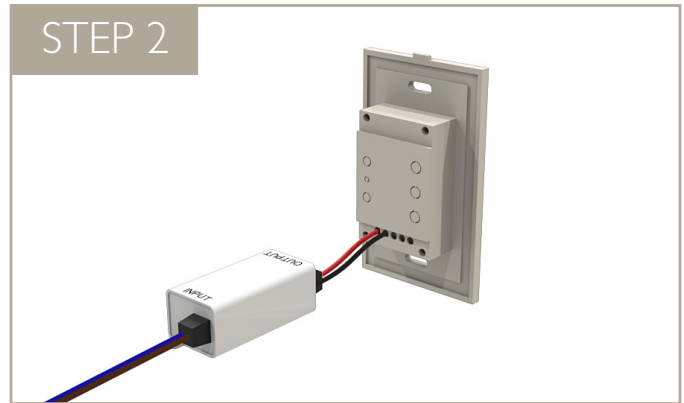
# INSTALLATION INSTRUCTIONS

## WALL MOUNTED DMX RGB(W) TOUCH CONTROLS



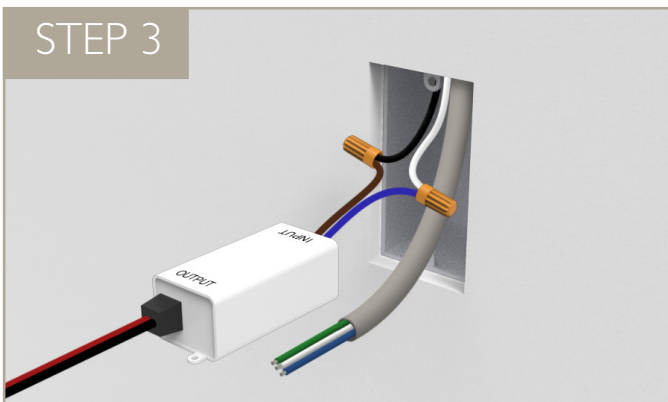
STEP 1

Separate the touch panel from the controller base by pulling on the tab at the top.



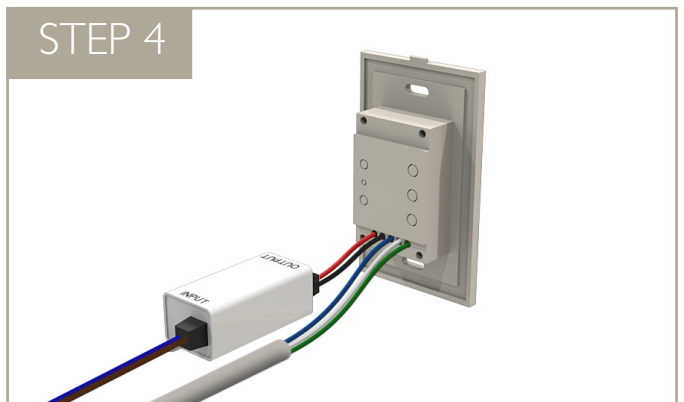
STEP 2

Connect power supply output wiring to wall mount controller. Ensure to connect to the proper polarity. Red (+), Black (-)



STEP 3

Connect power supply input wiring to line voltage and place inside wall box.



STEP 4

Connect data wires to controller data input terminals. Use green wire for GND, blue wire for D(-), white wire for D(+).

**NOTE:** Must use communication cable for DMX data signal. Signal will not work when used with power cables. Cat5 twisted pair data cable is recommended.

# INSTALLATION INSTRUCTIONS

## WALL MOUNTED DMX RGB(W) TOUCH CONTROLS



Secure wall mount controller base to wall box using screws provided.



Attach touch panel to the controller base and turn power on to the unit.



3 zones can be controlled independently or together. Refer to DMX decoder installation instructions for more detail.

# INSTALLATION INSTRUCTIONS

## WALL MOUNTED DMX RGB(W) TOUCH CONTROLS

### TYPICAL COLOR CHANGING CONNECTION DIAGRAM

