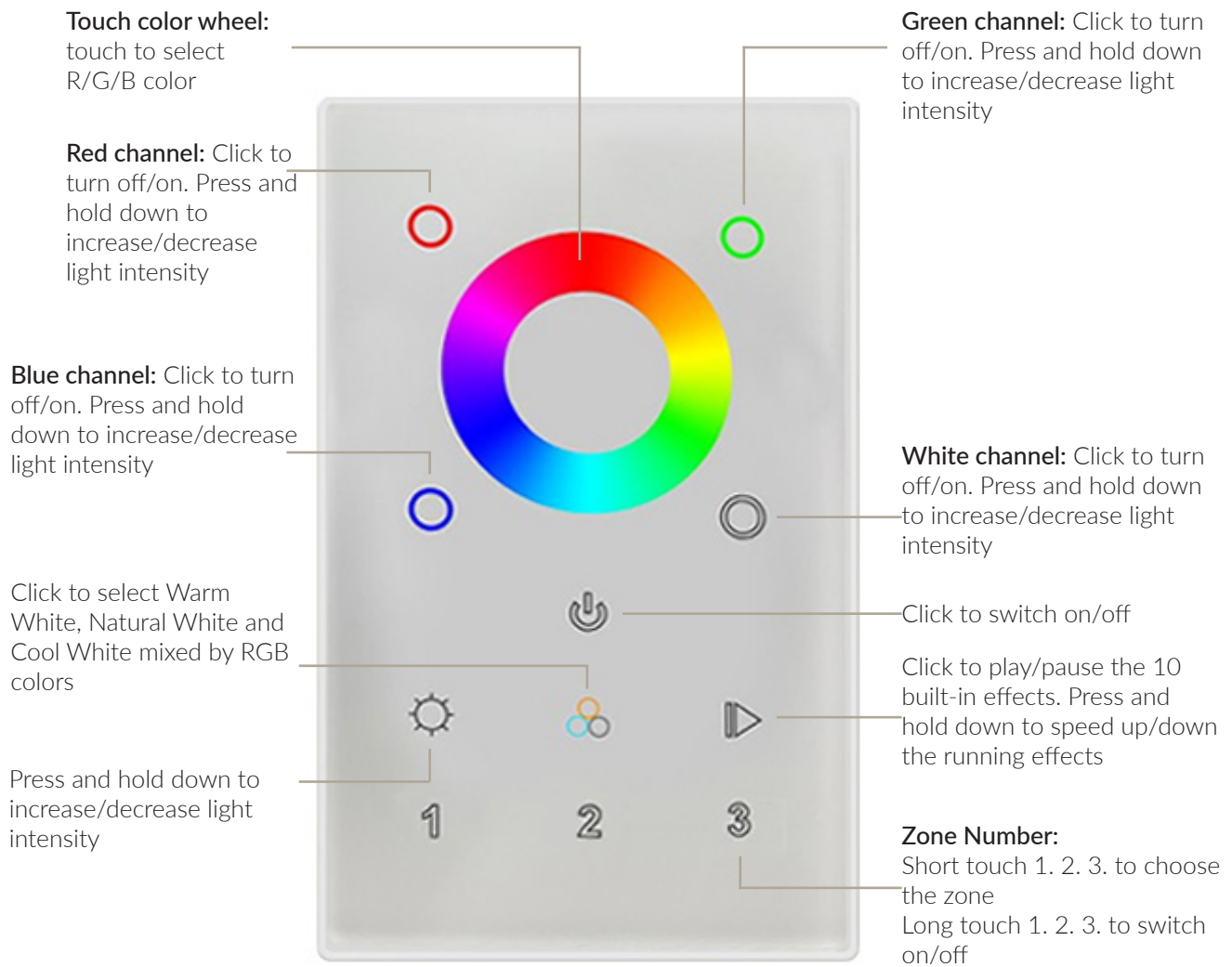


**SAFETY INFORMATION**

- **WARNING:** These products may represent a potential shock or fire hazard if improperly installed or attached in any way. Products should be installed in accordance with these instructions, local electrical codes and the National Electric Code (NEC).
- Use only with 12V or 24V non-dimmable hardwire power supply. Factory warranty will be void if used otherwise.
- Do not use if there is any damage to the unit or to the wiring/insulation. Inspect periodically.
- Ensure wires are in compliance with local electrical codes.
- Controller is intended for indoor use in dry locations and not suitable for outdoor applications.
- Ensure proper gauge wires are installed between power supplies, controls and LED lighting to avoid voltage drop.
- Ambient temperature should not exceed 110°F or 50°C.
- Recommended load is 80% for optimal performance and lifespan.
- *Do not install the receiver or controller into a metal enclosure. It can cause signal interference that will affect the programming of the system.*

**FUNCTION INTRODUCTION:**

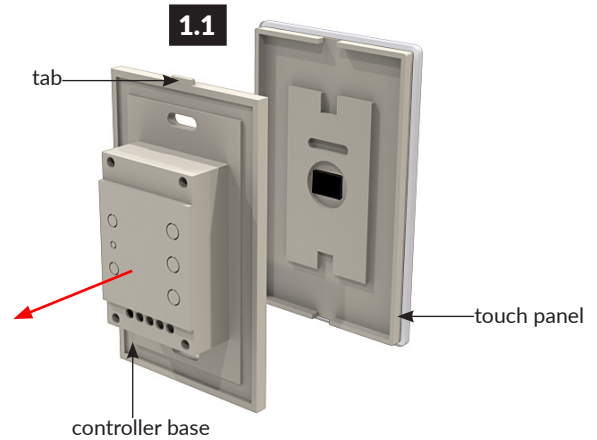
**NOTES:**  
 • This remote controls 4 zones/receivers. Each receiver can be paired with a maximum of 8 controllers.



## Installation

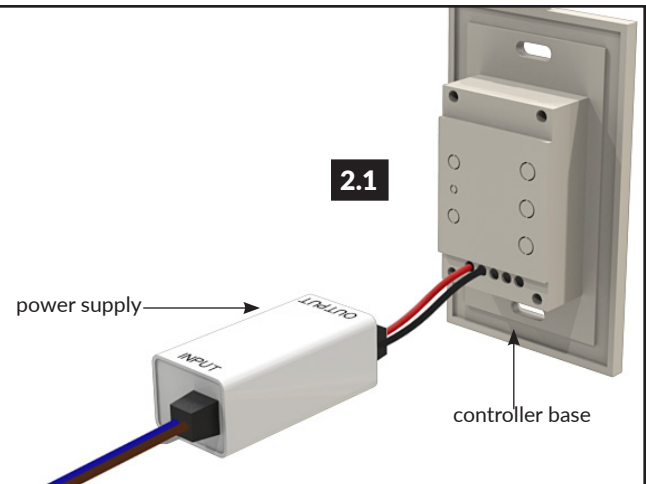
**1**

1.1 Separate the touch panel from the controller base by pulling on the tab at the top.



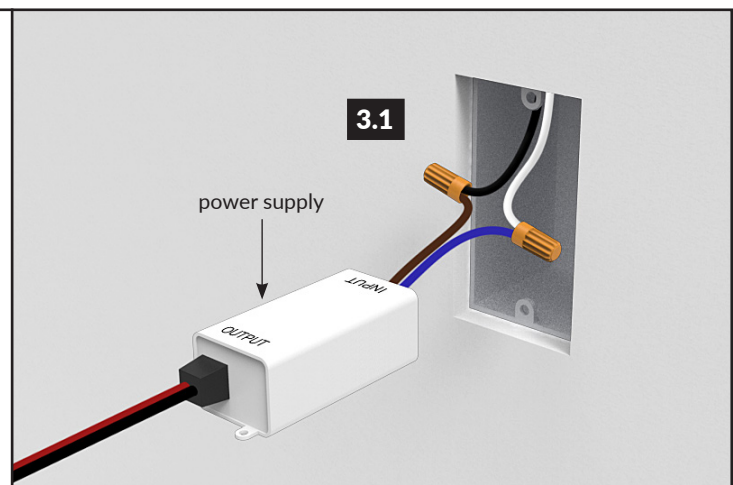
**2**

2.1 Connect power supply output wiring to wall mount controller. Ensure to connect to the proper polarity. Red (+), Black (-).



**3**

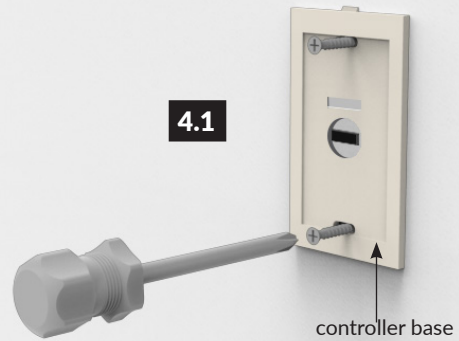
3.1 Connect the power supply input wiring to line voltage and place inside wall box.



## Installation

**4**

4.1 Secure wall mount controller base to wall box using screws provided.



**5**

5.1 Attach the face panel to the controller base and turn power on to the unit. If using the rotary dial controller, also attach the knob.



**6**

6.1 Once your controller is powered up, momentarily press and release the learning key on the RF receiver.




## Installation

**7**

7.1 Simultaneously rotate your finger around the control wheel (or turn the knob, if using the rotary dial) until the LEDs respond to your control.

**7.1**




**8**

**INSTALLATION NOTES:**

- This step is not applicable for rotary dial controller. To save a desired setting on the controller press and hold S1 / S2 / S3 button until the indicator light flashes twice.
- To delete a pairing press and hold the learning key on the RF receiver for 3 seconds or until the LEDs blink twice.

**8.1**



## Wiring Diagram

