



LLI ARCHITECTURAL LIGHTING

INSTALLATION INSTRUCTIONS WALL MOUNTED TUNABLE WHITE CONTROLLERS

LLI-C-CTRL-TW-TP
LLI-C-CTRL-TW-RT



DANGER: Prior to installation, disconnect power at the source.

Make sure you have all components listed below:

- LED tape
- Connectors
- Extrusion/Lens
- Controls
- Non-dimming power supply

INSTALLATION INSTRUCTIONS

WALL MOUNTED SINGLE COLOR CONTROLLERS

Please read all steps before beginning the installation.

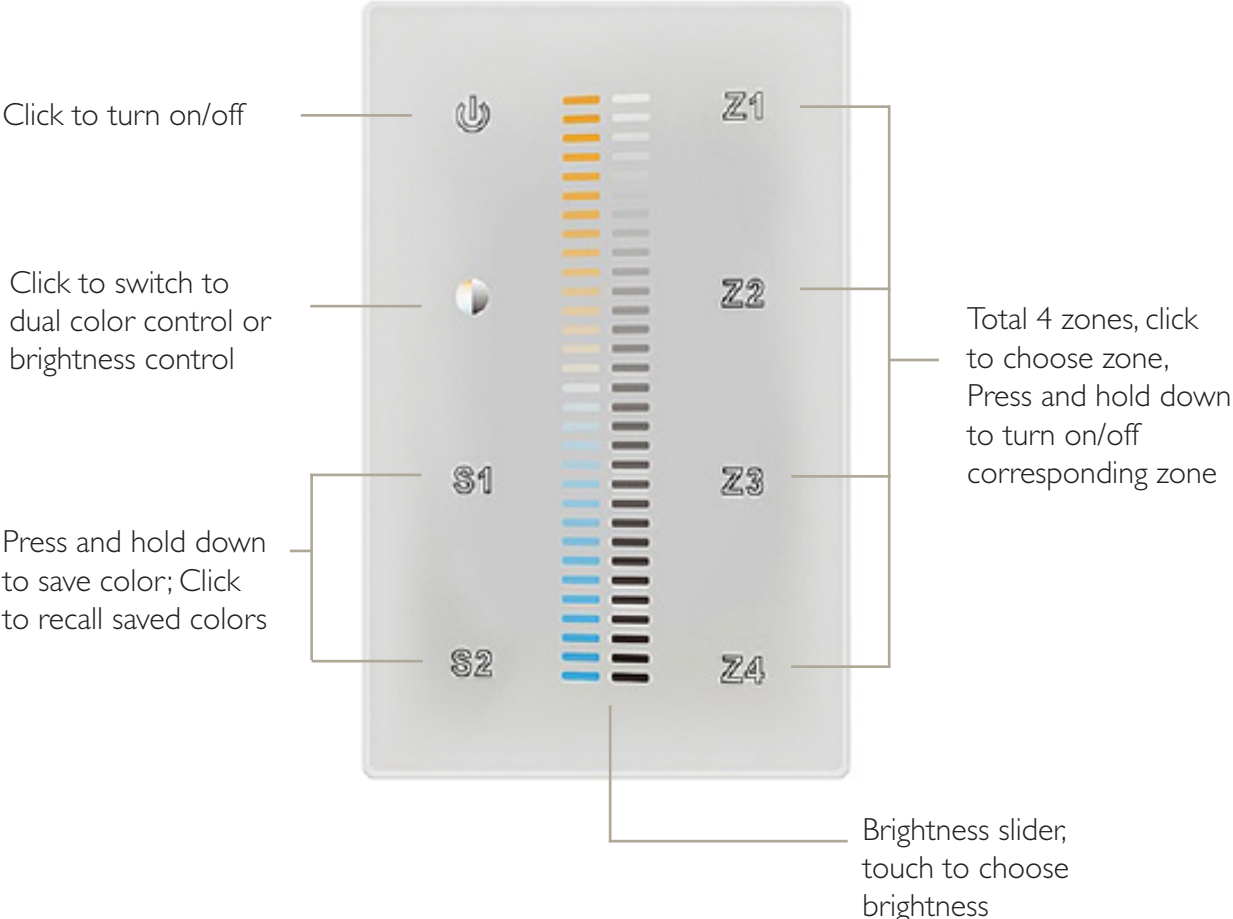
- **WARNING:** These products may represent a potential shock or fire hazard if improperly installed or attached in any way. Products should be installed in accordance with these instructions, local electrical codes and the National Electric Code (NEC).
- Use only with 12V or 24V non-dimmable hardwire power supply. Factory warranty will be void if used otherwise.
- Do not use if there is any damage to the unit or to the wiring/insulation. Inspect periodically.
- Ensure wires are in compliance with local electrical codes.
- Nexus Pro Controllers are intended for indoor use in dry locations and not suitable for outdoor applications.
- Ensure proper gauge wires are installed between power supplies, controls and LED lighting to avoid voltage drop.
- Ambient temperature should not exceed 110°F or 50°C.
- Recommended load is 80% for optimal performance and lifespan.
- Do not install the receiver into a metal enclosure. It can cause signal interference that will affect the programming of the system.

INSTALLATION INSTRUCTIONS

WALL MOUNTED SINGLE COLOR CONTROLLERS

LLI-C-CRTL-TW-TP

NOTE: This remote controls up to 4 zones/receivers



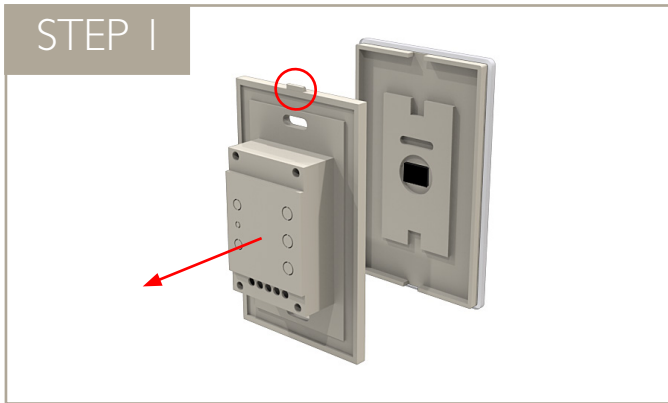
LLI-C-CRTL-TW-RT

NOTE: This remote controls 1 zone.

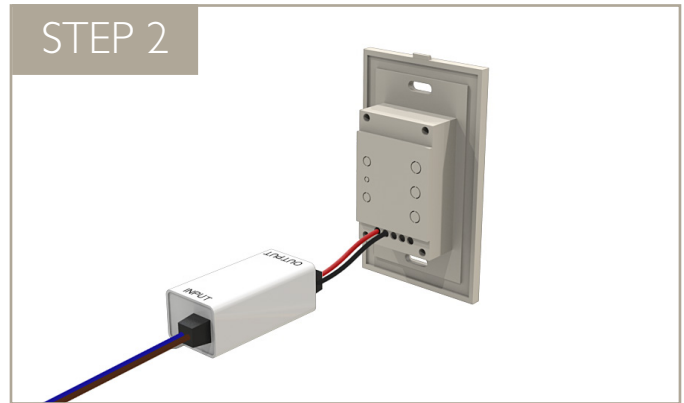


INSTALLATION INSTRUCTIONS

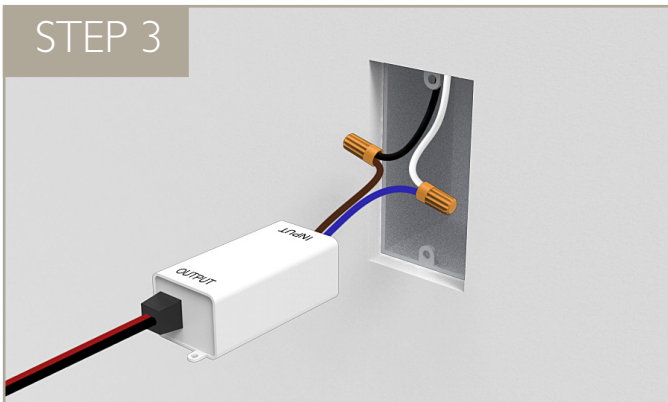
WALL MOUNTED SINGLE COLOR CONTROLLERS



Separate the touch panel from the controller base by pulling on the tab at the top.



Connect power supply output wiring to wall mount controller. Ensure to connect to the proper polarity. Red (+), Black (-)



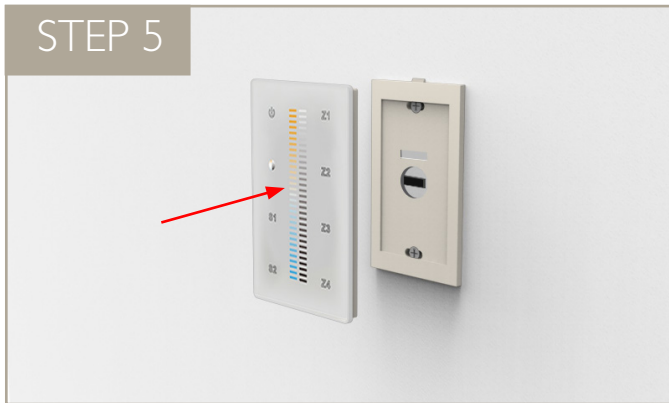
Connect power supply input wiring to line voltage and place inside wall box.



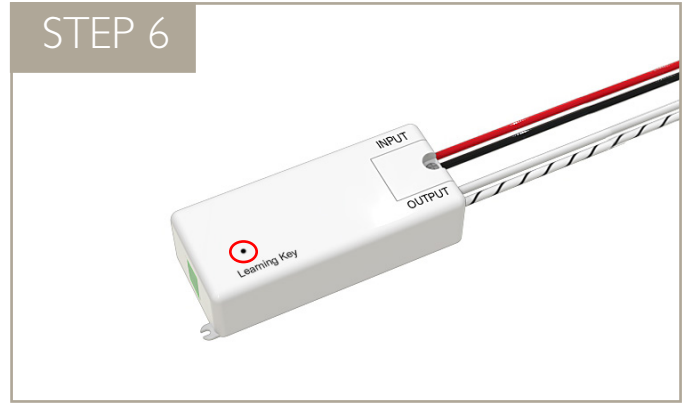
Secure wall mount controller base to wall box using screws provided.

INSTALLATION INSTRUCTIONS

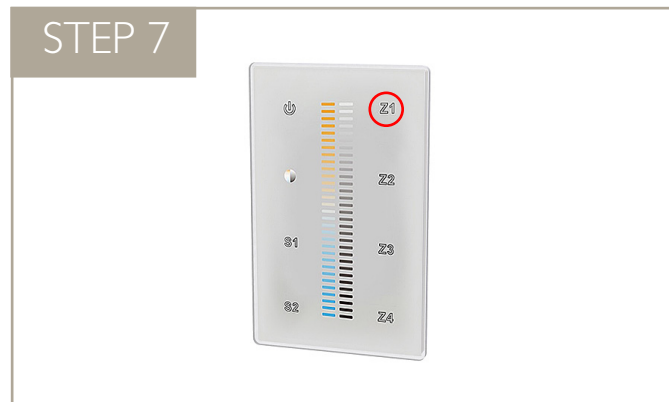
WALL MOUNTED SINGLE COLOR CONTROLLERS



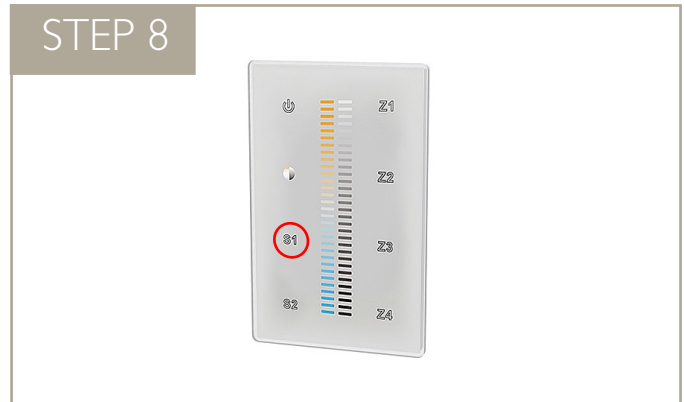
Attach front panel to the controller base and turn power on to the unit.



Once your controller is powered up, momentarily press and release the learning key on the RF receiver.



Select the desired zone on your controller (Z1 / Z2 / Z3 / Z4) and then slide your finger along the temperature slider until the LEDs respond to your control. NOTE: if using the rotary dial, simply turn the knob until the LEDs respond to your control.



NOTE: this step is not applicable for rotary dial controller:

To save a desired setting on the controller press and hold (S1 / S2 / S3) button until the indicator light flashes twice.

NOTE: To delete a pairing press and hold the learning key on the RF receiver for 3 seconds or until the LEDs blink twice.

INSTALLATION INSTRUCTIONS

WALL MOUNTED SINGLE COLOR CONTROLLERS

TYPICAL CONNECTION DIAGRAM

