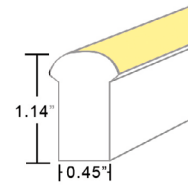
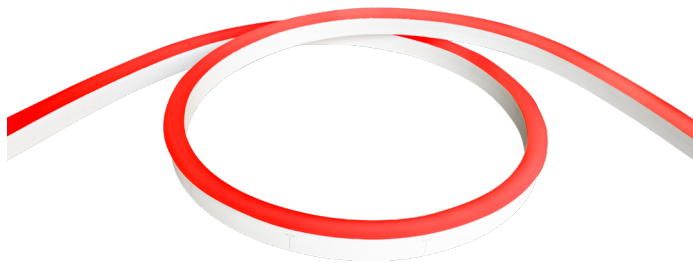


STATIC RED/AMBER LED NEON - 24V

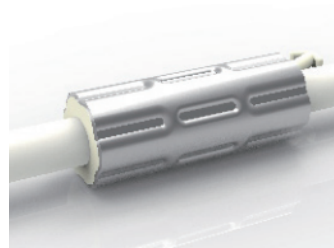
Dome Profile / Side Bending / Silicone



TECHNICAL INFORMATION

NOTE: All data has +/- 5% tolerance.

WATTAGE	2.5W per foot
IP RATING	IP68 - wet locations. Protected against temporary submersion, limited protection against harsh environments.
PROFILE	Dome
BEND ORIENTATION	Side Bending
HOUSING MATERIAL	Silicone, UV resistant per ISO 4892-3
OUTPUT	Red (620-630nm) - 43 lm/ft Amber (588-594nm) - 43 lm/ft
INPUT VOLTAGE	24VDC
SEGMENT LENGTH	Every 2.19"
MAXIMUM RUN	49 feet
DIMENSIONS	0.45" W x 1.14" H (11.5mm x 29mm)
MINIMUM BEND DIAMETER	4.72"
INSTALLATION TEMP.	-40°F to 140°F
OPERATING TEMP.	-40°F to 140°F
WARRANTY	3 year limited
POWER SUPPLY	Compatible with all 24VDC power supplies

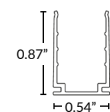


ANTI-WICKING FERRULE

Standard on all LED Neon power cables. Located 4.5" from the connector. Protects against water ingress and circuit board corrosion. H 0.47" x W 1.18"

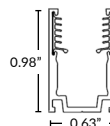
MOUNTING CLIP OPTIONS (SOLD SEPARATELY)

More options and channels available (page 5-7). Recommended 2 clips per 12" of Neon.



Mounting Clip

Part Number: LLI-ND-MCL-1.5IN
1.38" L x 0.87" H x 0.54" W



Silicone Grip Mounting Clip

Part Number: LLI-ND-MCL-SG-0.8IN
0.80" L x 0.98" H x 0.63" W

NOTE: Neon sections may be mounted end-to-end on the non-power feed end to create the appearance of longer runs. End-to-end Neon sections must have a 0.5" to 1" gap to allow for expansion/contraction. A dark spot may be visible at <20ft viewing distance.

PART NUMBER BUILDER / ORDERING GUIDE

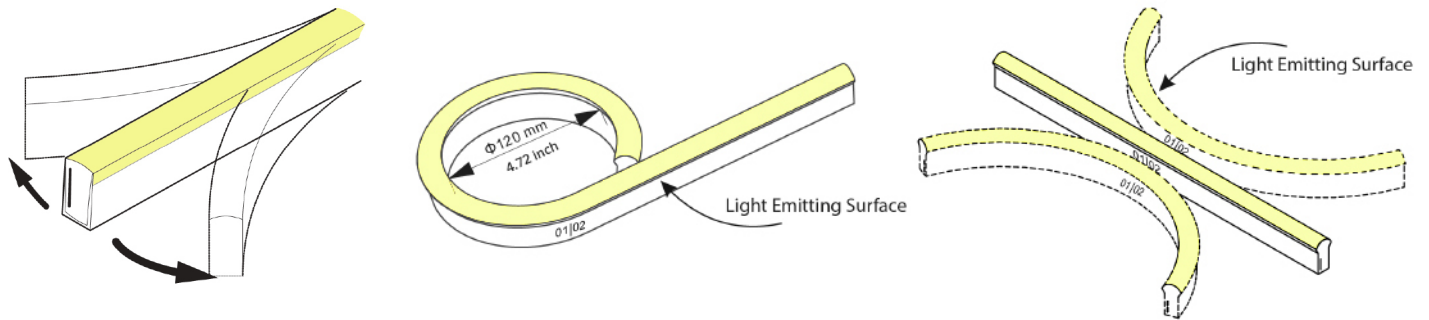
Example part number: LLI-N2.5W-68-DSS-RED-24V-96in

SERIES	IP RATING	TYPE	COLOR	VOLTAGE	LENGTH
LLI-N2.5W	68	DSS		24V	
			RED - Red, 43 lm/ft AMB - Amber, 43 lm/ft		(enter length in inches, up to 600")

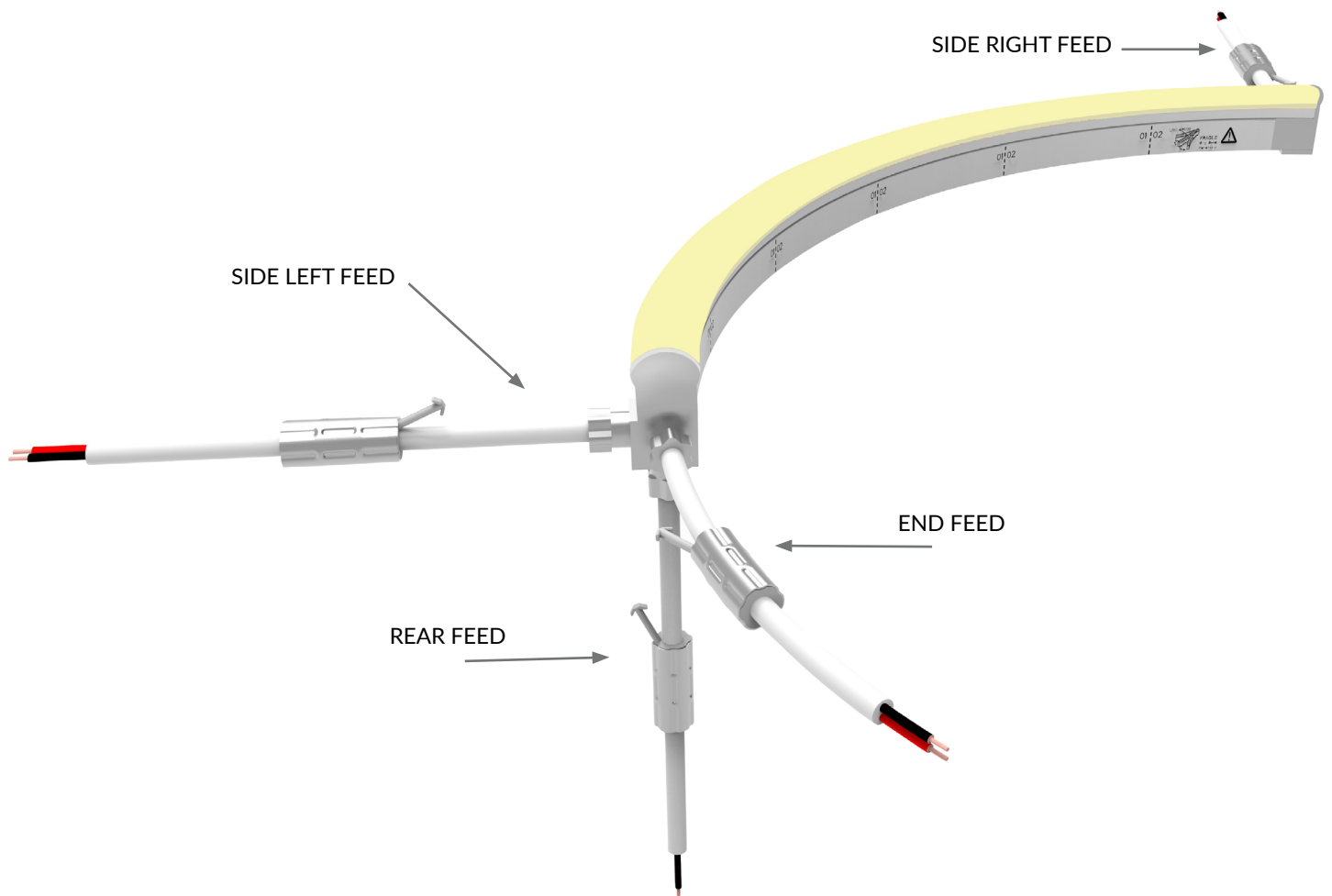
STATIC RED/AMBER LED NEON - 24V

Dome Profile / Side Bending / Silicone

ORIENTATION & MINIMUM BEND DIAMETER



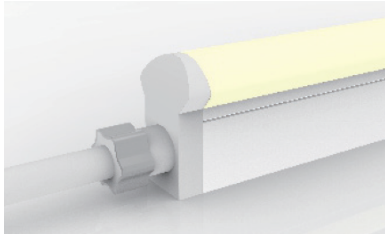
POWER FEED ORIENTATION GUIDE



STATIC RED/AMBER LED NEON - 24V

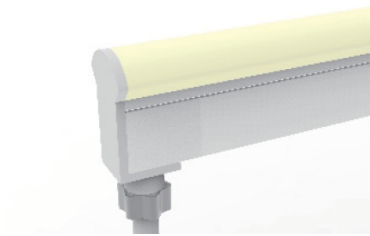
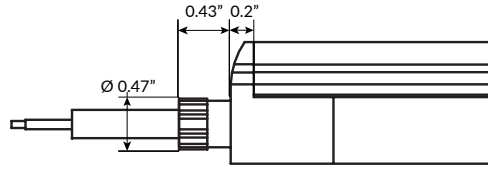
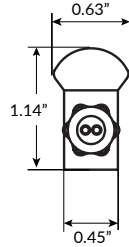
Dome Profile / Side Bending / Silicone

POWER FEED & TERMINATION OPTIONS (IP68)



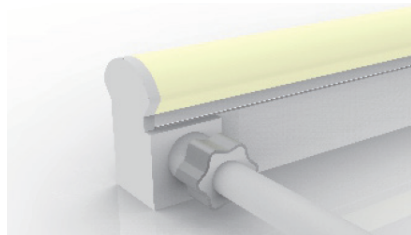
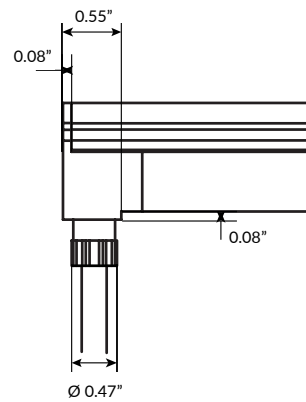
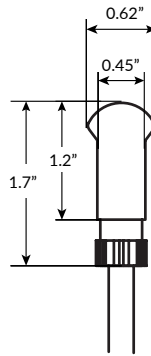
End Power Feed

SERIES	LENGTH
LLI-ND-68-PWR2-EF	39IN 118IN 196IN 393IN



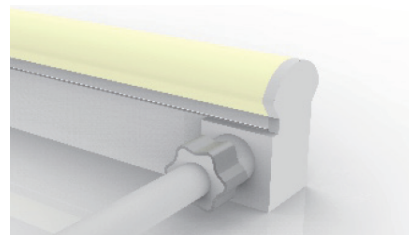
Rear Power Feed

SERIES	LENGTH
LLI-ND-68-PWR2-RF	39IN 118IN 196IN 393IN



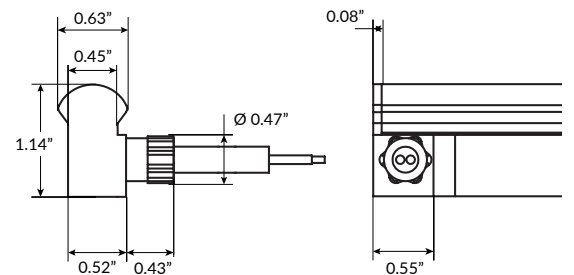
Side Right Power Feed

SERIES	SIDE	LENGTH
LLI-ND-68-PWR2	SR	39IN 118IN 196IN 393IN



Side Left Power Feed

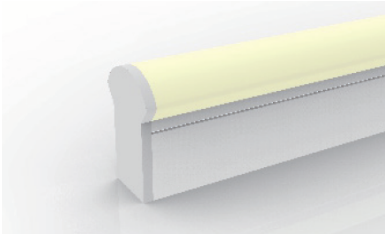
SERIES	SIDE	LENGTH
LLI-ND-68-PWR2	SL	39IN 118IN 196IN 393IN



STATIC RED/AMBER LED NEON - 24V

Dome Profile / Side Bending / Silicone

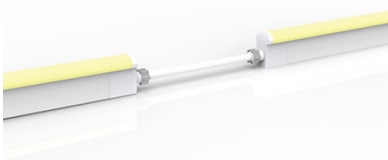
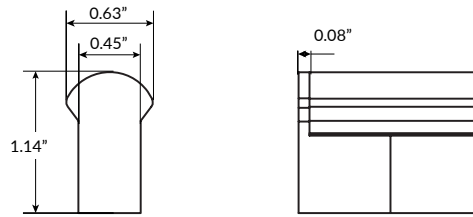
POWER FEED & TERMINATION OPTIONS (IP68)



End Cap

SERIES

LLI-ND-68-EC



Jumper Power Connector (maximum 4 per run)

SERIES

LLI-ND-68-CON2

SIDE

LENGTH (L)

SR	12IN
SL	39IN
EF	118IN
RF	196IN
	393IN



STATIC RED/AMBER LED NEON - 24V

Dome Profile / Side Bending / Silicone

OVERALL LENGTH / CUT POINT GUIDE

Dimension tolerance of $\pm 1/8"$. Measurements listed below apply to Side Feed and Rear Feed Neon only. Add 1" to measurements below for End Feed Neon. Measurements below do not include area required for routing power wire. Add 1" distance to layout to account for routing end feed power wire. This product expands and contracts in varying ambient temperatures. If butting Neon end-to-end, add 1/2" to 1" gap between sections for expansion.

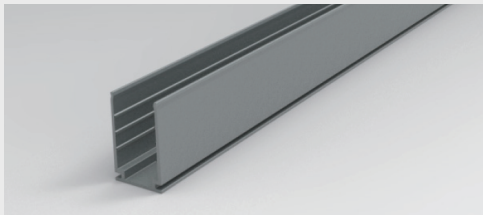
4.7"	6.9"	9.0"	11.2"	13.4"	15.6"	17.8"	20.0"	22.2"	24.4"	26.6"	28.8"
30.9"	33.1"	35.3"	37.5"	39.7"	41.9"	44.1"	46.3"	48.5"	50.7"	52.8"	55.0"
57.2"	59.4"	61.6"	63.8"	66.0"	68.2"	70.4"	72.6"	74.7"	76.9"	79.1"	81.3"
83.5"	85.7"	87.9"	90.1"	92.3"	94.5"	96.6"	98.8"	101.0"	103.2"	105.4"	107.6"
109.8"	112.0"	114.2"	116.4"	118.5"	120.7"	122.9"	125.1"	127.3"	129.5"	131.7"	133.9"
136.1"	138.3"	140.4"	142.6"	144.8"	147.0"	149.2"	151.4"	153.6"	155.8"	158.0"	160.2"
162.3"	164.5"	166.7"	168.9"	171.1"	173.3"	175.5"	177.7"	179.9"	182.1"	184.2"	186.4"
188.6"	190.8"	193.0"	195.2"	197.4"	199.6"	201.8"	204.0"	206.1"	208.3"	210.5"	212.7"
214.9"	217.1"	219.3"	221.5"	223.7"	225.9"	228.0"	230.2"	232.4"	234.6"	236.8"	239.0"
241.2"	243.4"	245.6"	247.8"	249.9"	252.1"	254.3"	256.5"	258.7"	260.9"	263.1"	265.3"
267.5"	269.7"	271.8"	274.0"	276.2"	278.4"	280.6"	282.8"	285.0"	287.2"	289.4"	291.6"
293.7"	295.9"	298.1"	300.3"	302.5"	304.7"	306.9"	309.1"	311.3"	313.5"	315.6"	317.8"
320.0"	322.2"	324.4"	326.6"	328.8"	331.0"	333.2"	335.4"	337.5"	339.7"	341.9"	344.1"
346.3"	348.5"	350.7"	352.9"	355.1"	357.3"	359.4"	361.6"	363.8"	366.0"	368.2"	370.4"
372.6"	374.8"	377.0"	379.2"	381.3"	383.5"	385.7"	387.9"	390.1"	392.3"	394.5"	396.7"
398.9"	401.1"	403.2"	405.4"	407.6"	409.8"	412.0"	414.2"	416.4"	418.6"	420.8"	423.0"
425.1"	427.3"	429.5"	431.7"	433.9"	436.1"	438.3"	440.5"	442.7"	444.9"	447.0"	449.2"
451.4"	453.6"	455.8"	458.0"	460.2"	462.4"	464.6"	466.8"	468.9"	471.1"	473.3"	475.5"
477.7"	479.9"	482.1"	484.3"	486.5"	488.7"	490.8"	493.0"	495.2"	497.4"	499.6"	501.8"
504.0"	506.2"	508.4"	510.6"	512.7"	514.9"	517.1"	519.3"	521.5"	523.7"	525.9"	528.1"
530.3"	532.5"	534.6"	536.8"	539.0"	541.2"	543.4"	545.6"	547.8"	550.0"	552.2"	554.4"
556.5"	558.7"	560.9"	563.1"	565.3"	567.5"	569.7"	571.9"	574.1"	576.3"	578.4"	580.6"
582.8"	585.0"	587.2"	589.4"								

MOUNTING CHANNELS

NOTE: Leave a 0.5" to 1" gap between Neon power feed and mounting channel, to avoid undue stress on power feed cables.

ALUMINUM MOUNTING CHANNEL

Silver anodized finish



Mounting Clip

Recommended 2 clips every 12"

Part Number: LLI-ND-MCL-1.5IN

Dimensions: 1.5" L x 0.87" H x 0.54" W

20" Mounting Channel

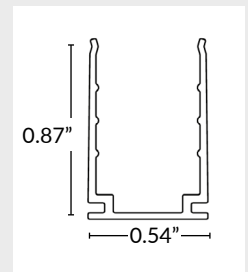
Part Number: LLI-ND-EXT-20IN

Dimensions: 20" L x 0.87" H x 0.54" W

39" Mounting Channel

Part Number: LLI-ND-EXT-39IN

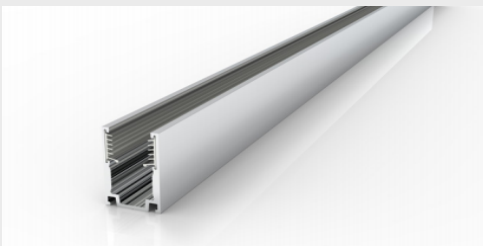
Dimensions: 39" L x 0.87" H x 0.54" W



SILICONE GRIP ALUMINUM MOUNTING CHANNEL

Recommended for ceiling and wall applications

Silver anodized finish



Mounting Clip

Recommended 2 clips every 12"

Part Number: LLI-ND-MCL-SG-0.8IN

Dimensions: 0.80" L x 0.98" H x 0.63" W

20" Mounting Channel

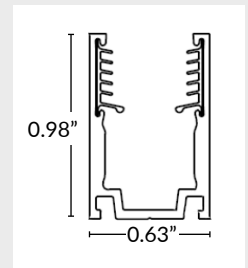
Part Number: LLI-ND-EXT-SG-20IN

Dimensions: 20" L x 0.98" H x 0.63" W

39" Mounting Channel

Part Number: LLI-ND-EXT-SG-39IN

Dimensions: 39.4" L x 0.98" H x 0.63" W



STATIC RED/AMBER LED NEON - 24V

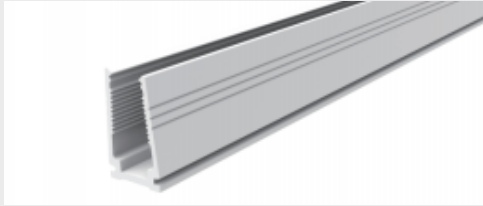
Dome Profile / Side Bending / Silicone

MOUNTING CHANNELS

NOTE: Leave a 0.5" to 1" gap between Neon power feed and mounting channel, to avoid undue stress on power feed cables.

PLASTIC MOUNTING CHANNEL

White finish

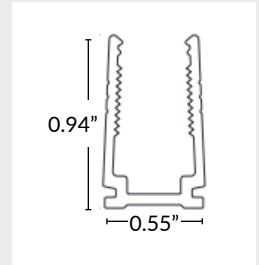


20" Mounting Channel

Part Number: LLI-NS-EXT-P-20IN
Dimensions: 20" L x 0.94" H x 0.55" W

39" Mounting Channel

Part Number: LLI-NS-EXT-P-39IN
Dimensions: 39.4" L x 0.94" H x 0.55" W



REINFORCED PLASTIC MOUNTING CHANNEL

Clear plastic



1.5" Mounting Clip

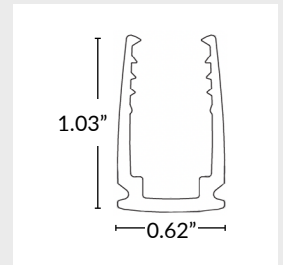
Part Number: LLI-ND-EXT-CP-1.5IN
Dimensions: 1.5" L x 1.03" H x 0.62" W

20" Mounting Channel

Part Number: LLI-ND-EXT-CP-20IN
Dimensions: 20" L x 1.03" H x 0.62" W

39" Mounting Channel

Part Number: LLI-ND-EXT-CP-39IN
Dimensions: 39.4" L x 1.03" H x 0.62" W



FLEXIBLE STAINLESS STEEL MOUNTING CHANNEL

Silver anodized finish



4" Mounting Channel

Part Number: LLI-ND-EXT-F-4IN
Dimensions: 4" L x 0.97" H x 0.52" W

12" Mounting Channel

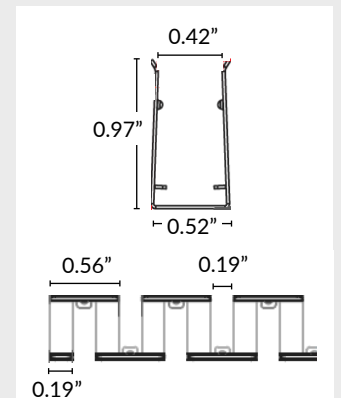
Part Number: LLI-ND-EXT-F-12IN
Dimensions: 12" L x 0.97" H x 0.52" W

20" Mounting Channel

Part Number: LLI-ND-EXT-F-20IN
Dimensions: 20" L x 0.97" H x 0.52" W

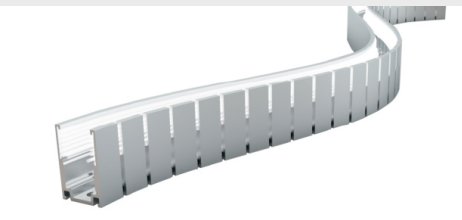
35" Mounting Channel

Part Number: LLI-ND-EXT-F-35IN
Dimensions: 35" L x 0.97" H x 0.52" W



BENDABLE SERRATED ALUMINUM MOUNTING CHANNEL

Silver anodized finish

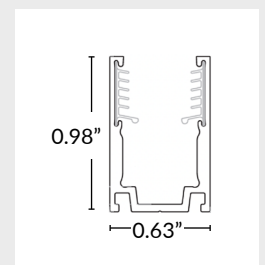


20" Mounting Channel

Part Number: LLI-ND-EXT-BS-20IN
Dimensions: 20" L x 0.98" H x 0.63" W

39" Mounting Channel

Part Number: LLI-ND-EXT-BS-39IN
Dimensions: 39.4" L x 0.98" H x 0.63" W



STATIC RED/AMBER LED NEON - 24V

Dome Profile / Side Bending / Silicone

MOUNTING CHANNELS

NOTE: Leave a 0.5" to 1" gap between Neon power feed and mounting channel, to avoid undue stress on power feed cables.

RECESSED ALUMINUM MOUNTING CHANNEL

Silver anodized finish



0.8" Mounting Clip

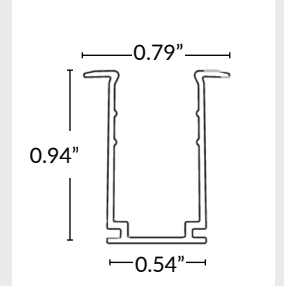
Part Number: LLI-ND-EXT-R-0.8IN
Dimensions: 0.8" L x 0.94" H x 0.79" W

20" Mounting Channel

Part Number: LLI-ND-EXT-R-20IN
Dimensions: 20" L x 0.94" H x 0.79" W

39" Mounting Channel

Part Number: LLI-ND-EXT-R-39IN
Dimensions: 39.4" L x 0.94" H x 0.79" W



RECESSED ALUMINUM MOUNTING CHANNEL WITH SILICONE GRIP

Recommended for ceiling and wall applications

Silver anodized finish



0.8" Mounting Clip

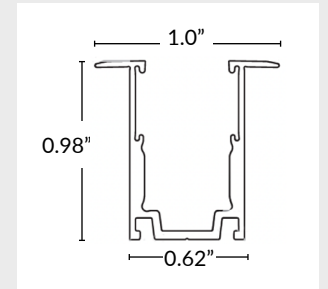
Part Number: LLI-ND-MCL-RSG-0.8IN
Dimensions: 0.8" L x 0.98" H x 1.0" W

20" Mounting Channel

Part Number: LLI-ND-EXT-RSG-20IN
Dimensions: 20" L x 0.98" H x 1.0" W

39" Mounting Channel

Part Number: LLI-ND-EXT-RSG-39IN
Dimensions: 39.4" L x 0.98" H x 1.0" W



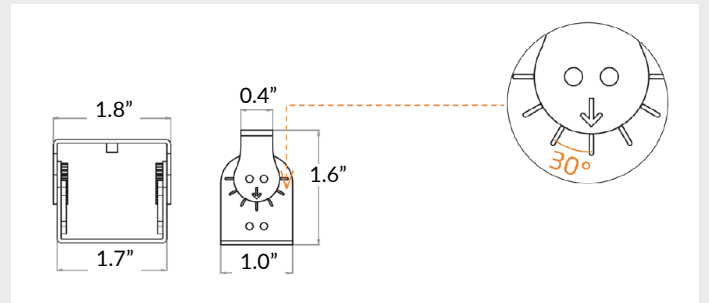
ADJUSTABLE MOUNTING BRACKET

Recommended 3 brackets for every 39" channel

Adjusts in 15° increments, notches every 30°



Part Number: LLI-ND-BKT-ADJ
Dimensions: 1" L x 1.6" H x 1.8" W



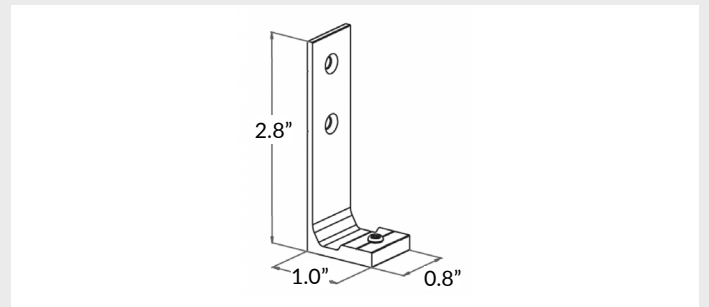
SIDE MOUNTING BRACKET

Recommended 2 brackets for every 20" or 39" channel

Not compatible with mounting clips



Part Number: LLI-ND-BKT-90D
Dimensions: 0.8" L x 2.8" H x 1.0" W



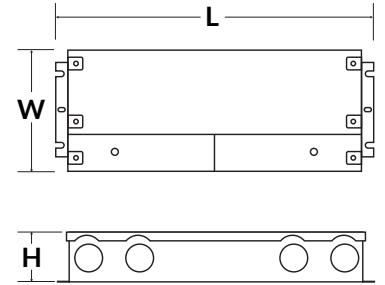
POWER SUPPLIES SOLD SEPARATELY

DIMMABLE ELECTRONIC 0-10V



Optimal performance dims to 0%.*

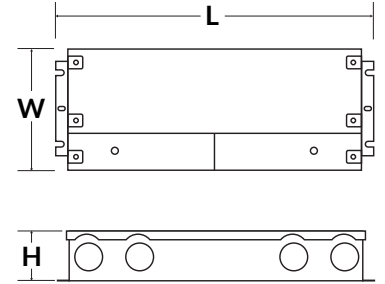
PART NUMBER	CAPACITY	INPUT	OUTPUT	CLASS	LOCATION	L	W	H
LLI-PS-DE010-030W-24V-KO	30W	120V or 277V	24V	CLASS 2	IP66 WET	6.5"	3.6"	1.6"
LLI-PS-DE010-060W-24V-KO	60W	120V or 277V	24V	CLASS 2	IP66 WET	7.4"	3.6"	1.6"
LLI-PS-DE010-096W-24V-KO	96W	120V or 277V	24V	CLASS 2	IP66 WET	8.7"	3.7"	1.7"
LLI-PS-DE010-192W-24V-CL2-KO	2x96W	120V or 277V	24V	CLASS 2	IP66 WET	10.9"	4.3"	1.9"
LLI-PS-DE010-200W-24V-KO	200W	120V or 277V	24V	CLASS 1	IP66 WET	10.2"	4.1"	1.8"
LLI-PS-DE010-288W-24V-CL2-KO	3x96W	120V or 277V	24V	CLASS 2	IP66 WET	11.9"	4.3"	1.9"
LLI-PS-DE010-300W-24V-KO	300W	120V or 277V	24V	CLASS 1	IP66 WET	10.9"	4.3"	1.8"



NON-DIMMABLE ELECTRONIC



PART NUMBER	CAPACITY	INPUT	OUTPUT	CLASS	LOCATION	L	W	H
LLI-PS-NDE-030W-24V-KO	30W	100-277V	24V	CLASS 2	IP66 WET	6.5"	3.5"	1.02"
LLI-PS-NDE-060W-24V-KO	60W	100-277V	24V	CLASS 2	IP66 WET	7.4"	3.5"	1.2"
LLI-PS-NDE-096W-24V-KO	96W	100-277V	24V	CLASS 2	IP66 WET	8.7"	3.7"	1.7"
LLI-PS-NDE-192W-24V-CL2-KO	2x96W	100-277V	24V	CLASS 2	IP66 WET	10.9"	4.1"	1.9"
LLI-PS-NDE-200W-24V-KO	200W	100-277V	24V	CLASS 1	IP66 WET	10.3"	4.1"	1.8"
LLI-PS-NDE-288W-24V-CL2-KO	3x96W	100-277V	24V	CLASS 2	IP66 WET	11.9"	4.1"	1.9"
LLI-PS-NDE-300W-24V-KO	300W	100-277V	24V	CLASS 1	IP66 WET	10.9"	4.3"	1.8"

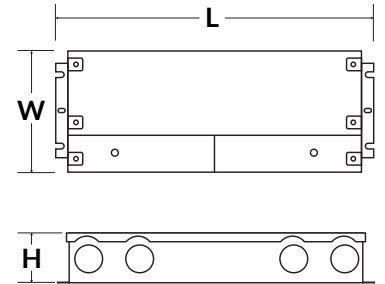


DIMMABLE ELECTRONIC FLICKER-FREE



Optimal performance dims to 2-5%.

PART NUMBER	CAPACITY	INPUT	OUTPUT	CLASS	LOCATION	L	W	H
LLI-PS-UDEFF-030W-24V-KO	30W	110-277V	24V	CLASS 2	IP66 WET	6.5"	3.6"	1.0"
LLI-PS-UDEFF-060W-24V-KO	60W	110-277V	24V	CLASS 2	IP66 WET	7.4"	3.6"	1.0"
LLI-PS-UDEFF-096W-24V-KO	96W	110-277V	24V	CLASS 2	IP66 WET	8.7"	3.7"	1.6"
LLI-PS-UDEFF-192W-24V-CL2-KO	2x96W	110-277V	24V	CLASS 2	IP66 WET	10.9"	4.3"	1.9"
LLI-PS-UDEFF-200W-24V-KO	200W	110-277V	24V	CLASS 1	IP66 WET	10.2"	4.1"	1.8"
LLI-PS-UDEFF-288W-24V-CL2-KO	3x96W	110-277V	24V	CLASS 2	IP66 WET	11.9"	4.3"	1.9"
LLI-PS-UDEFF-300W-24V-KO	300W	110-277V	24V	CLASS 1	IP66 WET	11.0"	4.3"	1.8"

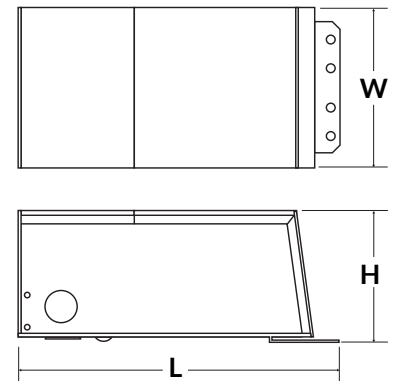


DIMMABLE MAGNETIC



Optimal performance dims to 5-10%.*

PART NUMBER	CAPACITY	INPUT	OUTPUT	CLASS	LOCATION	L	W	H
LLI-PS-DM-020W-24V-KO	20W	120V or 277V	24V	CLASS 2	NEMA 3R WET	7.38"	2.11"	1.60"
LLI-PS-DM-040W-24V-KO	40W	120V or 277V	24V	CLASS 2	NEMA 3R WET	7.38"	2.11"	1.60"
LLI-PS-DM-060W-24V-KO	60W	120V or 277V	24V	CLASS 2	NEMA 3R WET	8.13"	3.93"	1.59"
LLI-PS-DM-100W-24V-KO	100W	120V or 277V	24V	CLASS 2	NEMA 3R WET	8.13"	3.93"	1.59"
LLI-PS-DM-150W-24V-KO	150W	120V or 277V	24V	CLASS 1	NEMA 3R WET	8.79"	4.15"	3.41"
LLI-PS-DM-200W-24V-KO	200W	120V or 277V	24V	CLASS 1	NEMA 3R WET	8.79"	4.15"	3.41"
LLI-PS-DM-300W-24V-KO	300W	120V or 277V	24V	CLASS 1	NEMA 3R WET	8.79"	4.15"	3.41"
LLI-PS-DM-300W-24V-CL2-KO	6 x 50W	120V or 277V	24V	CLASS 2	NEMA 3R WET	10.29"	5.69"	3.43"
LLI-PS-DM-600W-24V-KO	2 x 300W	120V or 277V	24V	CLASS 1	NEMA 3R WET	10.29"	6.79"	4.68"

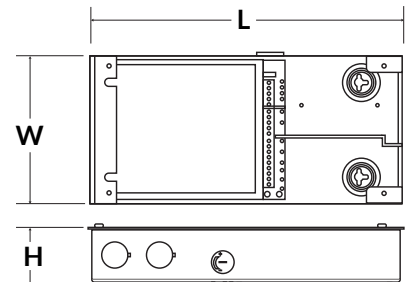


LUTRON HI-LUME PREMIER 0.1% DIMMABLE ELECTRONIC



Soft-on, Fade-to-Black, continuous flicker-free dimming from 100% to 0.1.

PART NUMBER	CAPACITY	INPUT	OUTPUT	CLASS	LOCATION	L	W	H
L3D0-96W24V-U	96W	120-277V	24V	CLASS 2	IP20 DRY	10.5"	5.5"	2.0"



*Performance can be affected by driver loading and dimmer type.