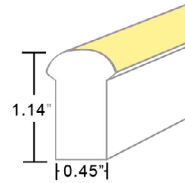
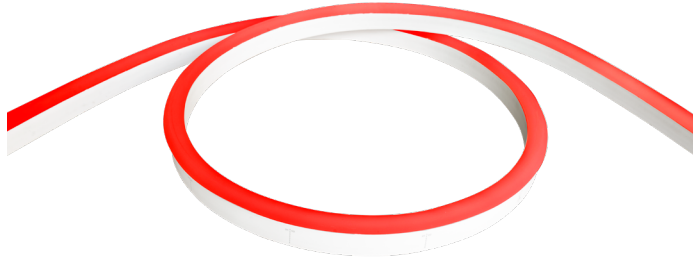


LINE VOLTAGE STATIC RED/AMBER LED NEON - 120V

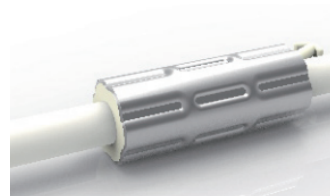
Dome Profile / Side Bending / PVC



TECHNICAL INFORMATION

NOTE: All data has +/- 5% tolerance.

| | |
|--------------------|---|
| WATTAGE | 3.1W per foot |
| BEND ORIENTATION | Side bend |
| IP RATING | IP65 - wet locations; not suitable for submersion, limited protection against harsh environments. Meets ETL 1598 standard. |
| HOUSING MATERIAL | PVC |
| OUTPUT | Red 76 lm/ft Amber 76 lm/ft |
| INPUT VOLTAGE | 120VAC |
| SEGMENT LENGTH | Every 4.92", not field-cutttable |
| DIMMABLE | Yes, compatible with ELV reverse phase dimmers |
| MAXIMUM RUN | 65ft max. run for individual section. 130ft max. run for two (2) 65ft sections joined by jumper cable. See pages 2-3. One (1) fuse box required per run, LLI-NAC-65-ETLBOX-12IN-120V |
| DIMENSIONS | 0.45" W x 1.14" H (11.5mm x 29mm) |
| MINIMUM BEND | 4.72" diameter |
| INSTALLATION TEMP. | 4°F to 120°F |
| OPERATING TEMP. | -4°F to 120°F |
| WARRANTY | 3 year limited |

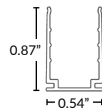


ANTI-WICKING FERRULE

Standard on all LED Neon power cables. Located 4.5" from the connector. Protects against water ingress and circuit board corrosion. H 0.47" x W 1.18"

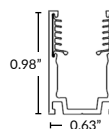
MOUNTING CLIP OPTIONS (SOLD SEPARATELY)

More options and channels available (page 6-8). Recommended 2 clips per 12" of Neon.



Mounting Clip

Part Number: LLI-ND-MCL-1.5IN
1.38" L x 0.87" H x 0.54" W



Silicone Grip Mounting Clip

Part Number: LLI-ND-MCL-SG-0.8IN
0.80" L x 0.98" H x 0.63" W

NOTE: Neon sections may be mounted end-to-end on the non-power feed end to create the appearance of longer runs. End-to-end Neon sections must have a 0.5" to 1" gap to allow for expansion/contraction. A dark spot may be visible at <20ft viewing distance.

PART NUMBER BUILDER / ORDERING GUIDE

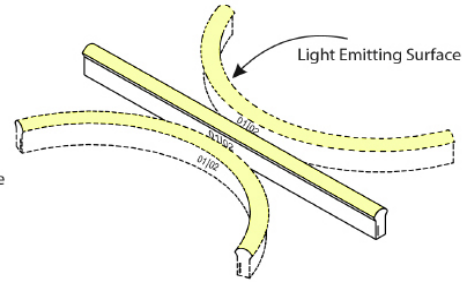
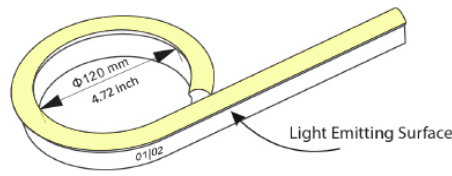
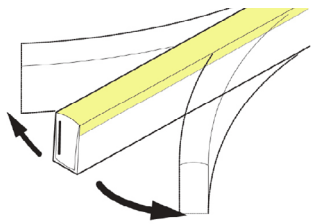
Example part number: LLI-N3.1W-65-DSP-RED-120V-96in

| | | | | | |
|-----------|-----------|------|----------------------------------|---------|--------------------------------------|
| SERIES | IP RATING | TYPE | CCT | VOLTAGE | LENGTH |
| LLI-N3.1W | 65 | DSP | | 120V | |
| | | | RED - 76 lm/ft AMB - 76 lm/ft | | (enter length in inches, up to 780") |

LINE VOLTAGE STATIC RED/AMBER LED NEON - 120V

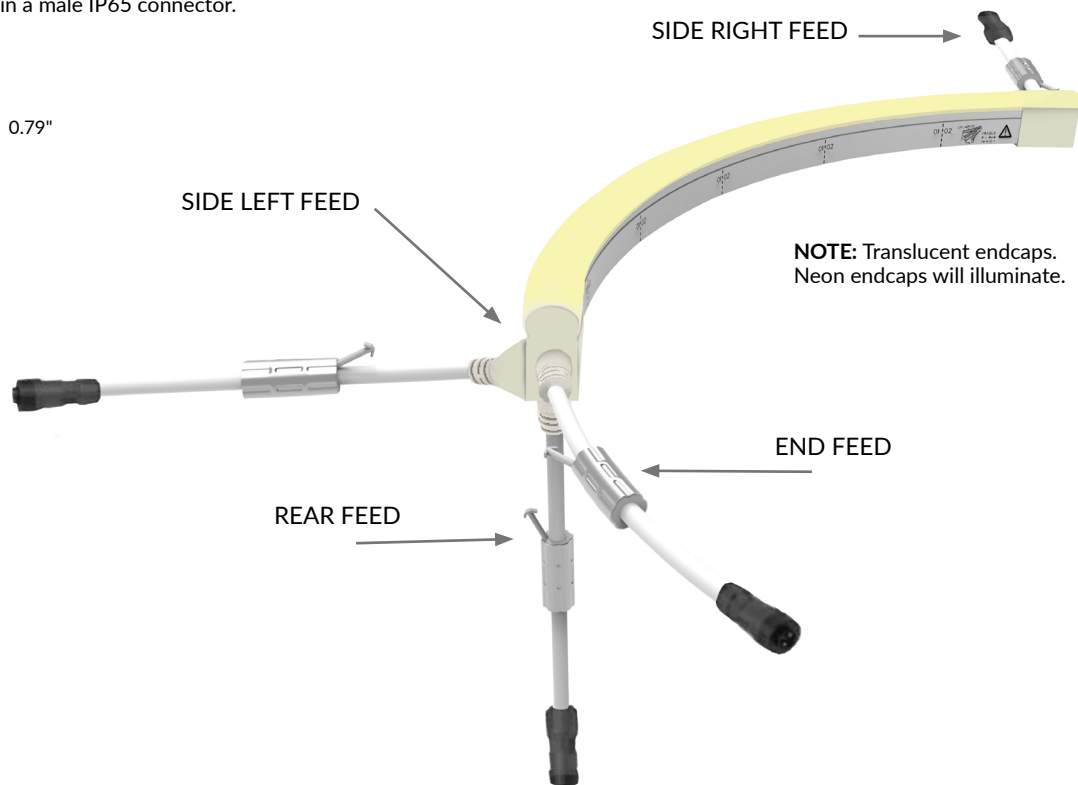
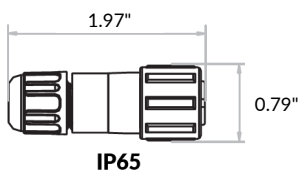
Dome Profile / Side Bending / PVC

ORIENTATION & MINIMUM BEND DIAMETER



POWER FEED ORIENTATION GUIDE

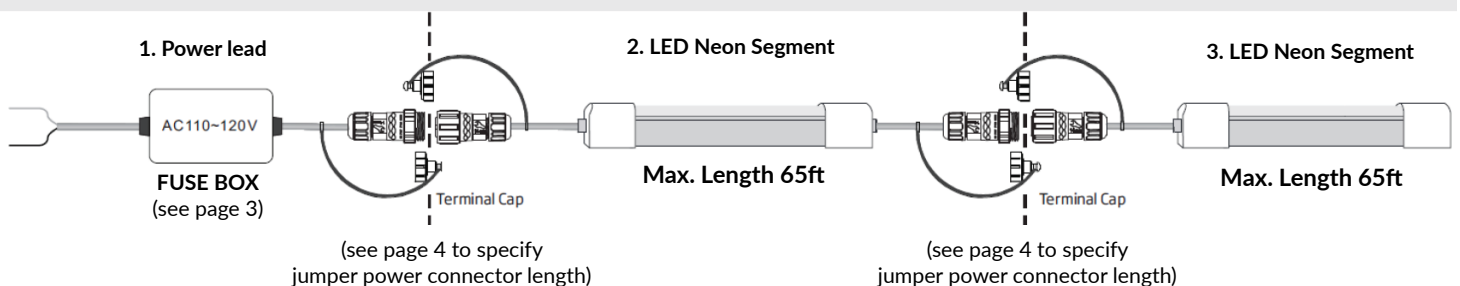
All power feeds terminate in a male IP65 connector.



STANDARD LAYOUT



ETL Certified (Standard UL 1598, CSA C22.2#250.0)



LINE VOLTAGE STATIC RED/AMBER LED NEON - 120V

Dome Profile / Side Bending / PVC

POWER FEED & TERMINATION OPTIONS (IP65)

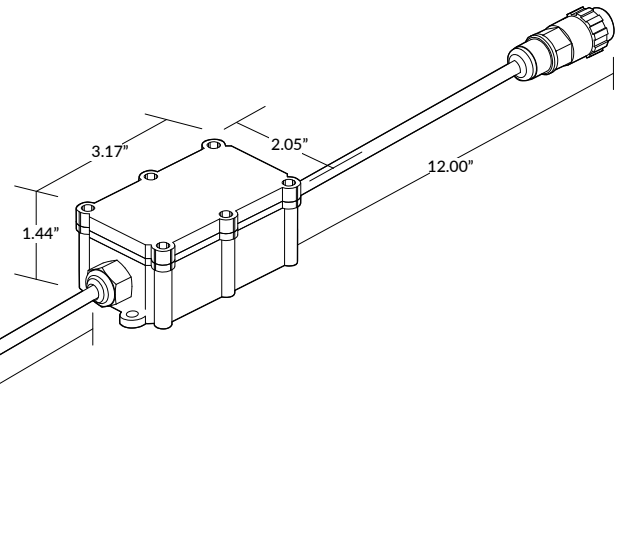


Fuse Box

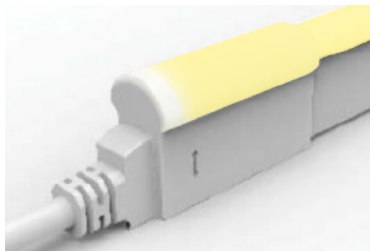
(required for every Neon section)

18AWG. 55" cable length before box; 12" cable length after box.
Box must be accessible for fuse replacement.

Do not open fuse box during installation or during use.

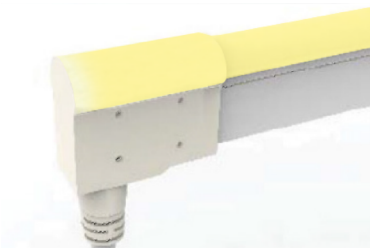
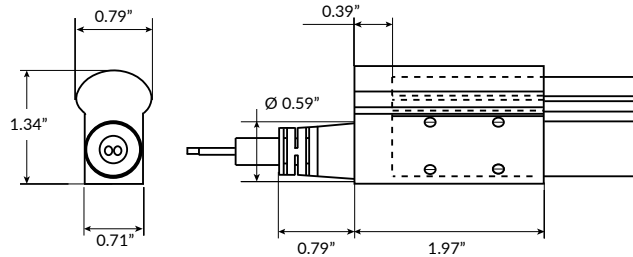


| SERIES | LENGTH | INPUT |
|-------------------|--------|-------|
| LLI-NAC-65-ETLBOX | 12IN | 120V |



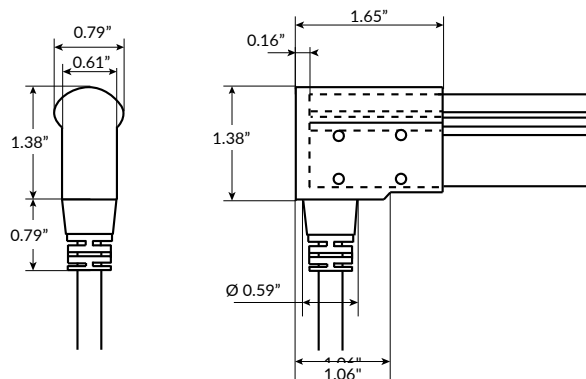
End Power Feed

| SERIES | SIDE | LENGTH | INPUT |
|----------------|------|---------------------------------|-------|
| LLI-ND-65-PWR2 | EF | 39IN 118IN 196IN 393IN | 120V |



Rear Power Feed

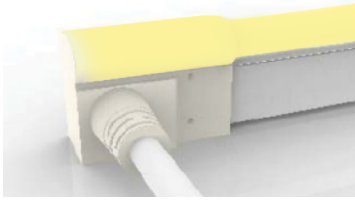
| SERIES | SIDE | LENGTH | INPUT |
|----------------|------|---------------------------------|-------|
| LLI-ND-65-PWR2 | RF | 39IN 118IN 196IN 393IN | 120V |



LINE VOLTAGE STATIC RED/AMBER LED NEON - 120V

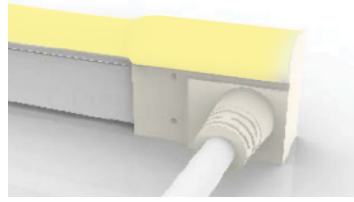
Dome Profile / Side Bending / PVC

POWER FEED & TERMINATION OPTIONS (IP65)



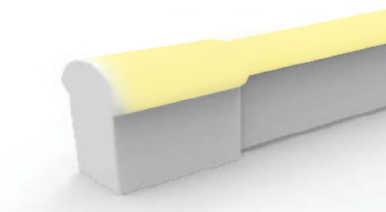
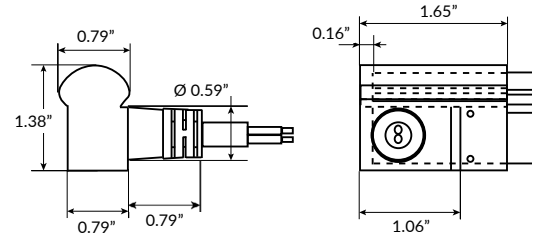
Side Right Power Feed

| SERIES | SIDE | LENGTH | INPUT |
|----------------|------|---------------------------------|-------|
| LLI-ND-65-PWR2 | SR | 39IN 118IN 196IN 393IN | 120V |



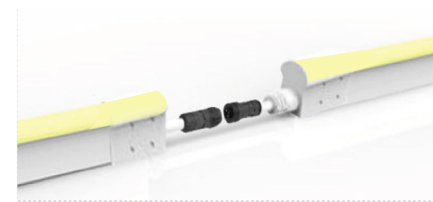
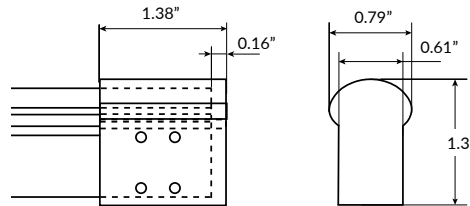
Side Left Power Feed

| SERIES | SIDE | LENGTH | INPUT |
|----------------|------|---------------------------------|-------|
| LLI-ND-65-PWR2 | SL | 39IN 118IN 196IN 393IN | 120V |



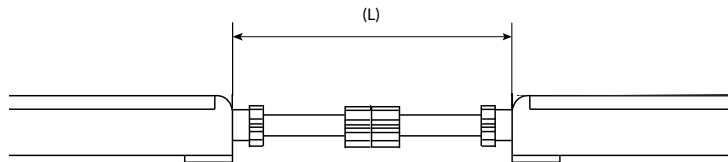
End Cap

| SERIES |
|-------------------|
| LLI-ND-65-EC-120V |



Jumper Power Connector

| SERIES | SIDE | LENGTH (L) |
|----------------|------|----------------|
| LLI-ND-65-CON2 | — | — |
| | SR | 12IN |
| | SL | 39IN |
| | EF | 118IN |
| | RF | 196IN 393IN |



LINE VOLTAGE STATIC RED/AMBER LED NEON - 120V

Dome Profile / Side Bending / PVC

OVERALL LENGTH / CUT POINT GUIDE

Dimension tolerance of $\pm 1/8"$.

This product expands and contracts in varying ambient temperatures. If butting Neon end-to-end, add 1/2" to 1" gap between sections for expansion.

SIDE FEED AND REAR FEED LED NEON

| | | | | | | | | | | | |
|--------|--------|--------|--------|--------|--------|--------|--------|--------|--------|--------|--------|
| 5.2" | 10.2" | 15.1" | 20.0" | 24.9" | 29.8" | 34.8" | 39.7" | 44.6" | 49.5" | 54.4" | 59.4" |
| 64.3" | 69.2" | 74.1" | 79.0" | 84.0" | 88.9" | 93.8" | 98.7" | 103.6" | 108.6" | 113.5" | 118.4" |
| 123.3" | 128.2" | 133.2" | 138.1" | 143.0" | 147.9" | 152.8" | 157.8" | 162.7" | 167.6" | 172.5" | 177.4" |
| 182.4" | 187.3" | 192.2" | 197.1" | 202.0" | 207.0" | 211.9" | 216.8" | 221.7" | 226.6" | 231.6" | 236.5" |
| 241.4" | 246.3" | 251.2" | 256.2" | 261.1" | 266.0" | 270.9" | 275.8" | 280.8" | 285.7" | 290.6" | 295.5" |
| 300.4" | 305.4" | 310.3" | 315.2" | 320.1" | 325.0" | 330.0" | 334.9" | 339.8" | 344.7" | 349.6" | 354.6" |
| 359.5" | 364.4" | 369.3" | 374.2" | 379.2" | 384.1" | 389.0" | 393.9" | 398.8" | 403.8" | 408.7" | 413.6" |
| 418.5" | 423.4" | 428.4" | 433.3" | 438.2" | 443.1" | 448.0" | 453.0" | 457.9" | 462.8" | 467.7" | 472.6" |
| 477.6" | 482.5" | 487.4" | 492.3" | 497.2" | 502.2" | 507.1" | 512.0" | 516.9" | 521.8" | 526.8" | 531.7" |
| 536.6" | 541.5" | 546.4" | 551.4" | 556.3" | 561.2" | 566.1" | 571.0" | 576.0" | 580.9" | 585.8" | 590.7" |
| 595.6" | 600.6" | 605.5" | 610.4" | 615.3" | 620.2" | 625.2" | 630.1" | 635.0" | 639.9" | 644.8" | 649.8" |
| 654.7" | 659.6" | 664.5" | 669.4" | 674.4" | 679.3" | 684.2" | 689.1" | 694.0" | 699.0" | 703.9" | 708.8" |
| 713.7" | 718.6" | 723.6" | 728.5" | 733.4" | 738.3" | 743.2" | 748.2" | 753.1" | 758.0" | 762.9" | 767.8" |
| 772.8" | 777.7" | | | | | | | | | | |

END FEED LED NEON

Measurement does not include area required for routing power wire. Add 1.5" distance account for routing end feed power wire.

| | | | | | | | | | | | |
|--------|--------|--------|--------|--------|--------|--------|--------|--------|--------|--------|--------|
| 6.1" | 11.0" | 15.9" | 20.9" | 25.8" | 30.7" | 35.6" | 40.5" | 45.5" | 50.4" | 55.3" | 60.2" |
| 65.1" | 70.1" | 75.0" | 79.9" | 84.8" | 89.7" | 94.7" | 99.6" | 104.5" | 109.4" | 114.3" | 119.3" |
| 124.2" | 129.1" | 134.0" | 138.9" | 143.9" | 148.8" | 153.7" | 158.6" | 163.5" | 168.5" | 173.4" | 178.3" |
| 183.2" | 188.1" | 193.1" | 198.0" | 202.9" | 207.8" | 212.7" | 217.7" | 222.6" | 227.5" | 232.4" | 237.3" |
| 242.3" | 247.2" | 252.1" | 257.0" | 261.9" | 266.9" | 271.8" | 276.7" | 281.6" | 286.5" | 291.5" | 296.4" |
| 301.3" | 306.2" | 311.1" | 316.1" | 321.0" | 325.9" | 330.8" | 335.7" | 340.7" | 345.6" | 350.5" | 355.4" |
| 360.3" | 365.3" | 370.2" | 375.1" | 380.0" | 384.9" | 389.9" | 394.8" | 399.7" | 404.6" | 409.5" | 414.5" |
| 419.4" | 424.3" | 429.2" | 434.1" | 439.1" | 444.0" | 448.9" | 453.8" | 458.7" | 463.7" | 468.6" | 473.5" |
| 478.4" | 483.3" | 488.3" | 493.2" | 498.1" | 503.0" | 507.9" | 512.9" | 517.8" | 522.7" | 527.6" | 532.5" |
| 537.5" | 542.4" | 547.3" | 552.2" | 557.1" | 562.1" | 567.0" | 571.9" | 576.8" | 581.7" | 586.7" | 591.6" |
| 596.5" | 601.4" | 606.3" | 611.3" | 616.2" | 621.1" | 626.0" | 630.9" | 635.9" | 640.8" | 645.7" | 650.6" |
| 655.5" | 660.5" | 665.4" | 670.3" | 675.2" | 680.1" | 685.1" | 690.0" | 694.9" | 699.8" | 704.7" | 709.7" |
| 714.6" | 719.5" | 724.4" | 729.3" | 734.3" | 739.2" | 744.1" | 749.0" | 753.9" | 758.9" | 763.8" | 768.7" |
| 773.6" | 778.5" | | | | | | | | | | |

LINE VOLTAGE STATIC RED/AMBER LED NEON - 120V

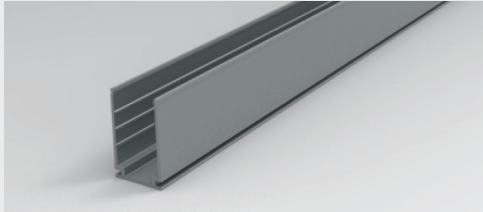
Dome Profile / Side Bending / PVC

MOUNTING CHANNELS

NOTE: Leave a 0.5" to 1" gap between Neon power feed and mounting channel, to avoid undue stress on power feed cables.

ALUMINUM MOUNTING CHANNEL

Silver anodized finish



Mounting Clip

Recommended 2 clips every 12"

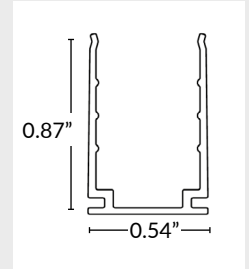
Part Number: LLI-ND-MCL-1.5IN
Dimensions: 1.5" L x 0.87" H x 0.54" W

20" Mounting Channel

Part Number: LLI-ND-EXT-20IN
Dimensions: 20" L x 0.87" H x 0.54" W

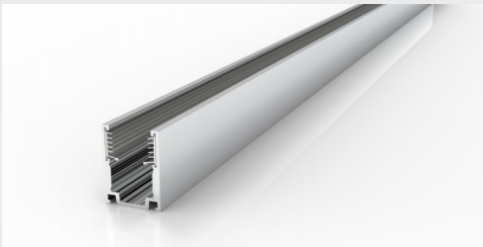
39" Mounting Channel

Part Number: LLI-ND-EXT-39IN
Dimensions: 39" L x 0.87" H x 0.54" W



SILICONE GRIP ALUMINUM MOUNTING CHANNEL

Recommended for ceiling and wall applications
Silver anodized finish



Mounting Clip

Recommended 2 clips every 12"

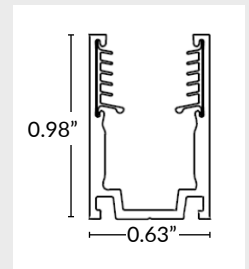
Part Number: LLI-ND-MCL-SG-1.5IN
Dimensions: 1.5" L x 0.98" H x 0.63" W

20" Mounting Channel

Part Number: LLI-ND-EXT-SG-20IN
Dimensions: 20" L x 0.98" H x 0.63" W

39" Mounting Channel

Part Number: LLI-ND-EXT-SG-39IN
Dimensions: 39.4" L x 0.98" H x 0.63" W



FLEXIBLE STAINLESS STEEL MOUNTING CHANNEL

Silver anodized finish



4" Mounting Channel

Part Number: LLI-ND-EXT-F-4IN
Dimensions: 4" L x 0.97" H x 0.52" W

12" Mounting Channel

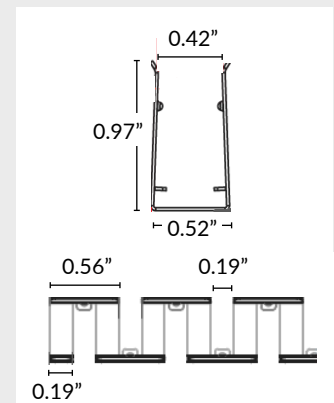
Part Number: LLI-ND-EXT-F-12IN
Dimensions: 12" L x 0.97" H x 0.52" W

20" Mounting Channel

Part Number: LLI-ND-EXT-F-20IN
Dimensions: 20" L x 0.97" H x 0.52" W

35" Mounting Channel

Part Number: LLI-ND-EXT-F-35IN
Dimensions: 35" L x 0.97" H x 0.52" W



PLASTIC MOUNTING CHANNEL

White finish

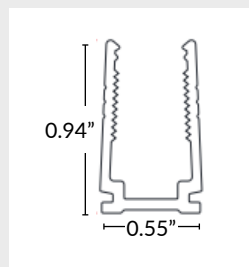


20" Mounting Channel

Part Number: LLI-NS-EXT-P-20IN
Dimensions: 20" L x 0.94" H x 0.55" W

39" Mounting Channel

Part Number: LLI-NS-EXT-P-39IN
Dimensions: 39.4" L x 0.94" H x 0.55" W



LINE VOLTAGE STATIC RED/AMBER LED NEON - 120V

Dome Profile / Side Bending / PVC

MOUNTING CHANNELS (CONTINUED)

NOTE: Leave a 0.5" to 1" gap between Neon power feed and mounting channel, to avoid undue stress on power feed cables.

REINFORCED PLASTIC MOUNTING CHANNEL

Clear plastic



1.5" Mounting Clip

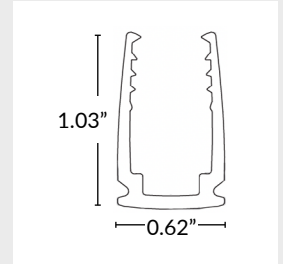
Part Number: LLI-ND-EXT-CP-1.5IN
Dimensions: 1.5" L x 1.03" H x 0.62" W

20" Mounting Channel

Part Number: LLI-ND-EXT-CP-20IN
Dimensions: 20" L x 1.03" H x 0.62" W

39" Mounting Channel

Part Number: LLI-ND-EXT-CP-39IN
Dimensions: 39.4" L x 1.03" H x 0.62" W



RECESSED ALUMINUM MOUNTING CHANNEL

Silver anodized finish



0.8" Mounting Clip

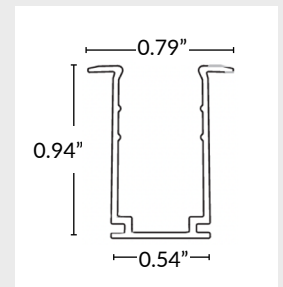
Part Number: LLI-ND-EXT-R-0.8IN
Dimensions: 0.8" L x 0.94" H x 0.79" W

20" Mounting Channel

Part Number: LLI-ND-EXT-R-20IN
Dimensions: 20" L x 0.94" H x 0.79" W

39" Mounting Channel

Part Number: LLI-ND-EXT-R-39IN
Dimensions: 39.4" L x 0.94" H x 0.79" W



RECESSED ALUMINUM MOUNTING CHANNEL WITH SILICONE GRIP

Recommended for ceiling and wall applications

Silver anodized finish



0.8" Mounting Clip

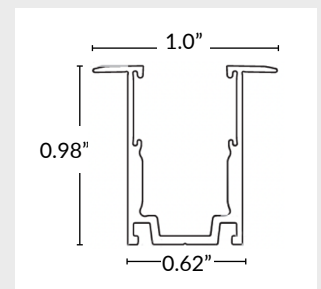
Part Number: LLI-ND-MCL-RSG-0.8IN
Dimensions: 0.8" L x 0.98" H x 1.0" W

20" Mounting Channel

Part Number: LLI-ND-EXT-RSG-20IN
Dimensions: 20" L x 0.98" H x 1.0" W

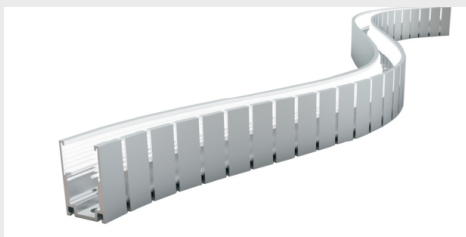
39" Mounting Channel

Part Number: LLI-ND-EXT-RSG-39IN
Dimensions: 39.4" L x 0.98" H x 1.0" W



BENDABLE SERRATED ALUMINUM MOUNTING CHANNEL

Silver anodized finish

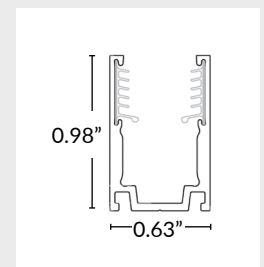


20" Mounting Channel

Part Number: LLI-ND-EXT-BS-20IN
Dimensions: 20" L x 0.98" H x 0.63" W

39" Mounting Channel

Part Number: LLI-ND-EXT-BS-39IN
Dimensions: 39.4" L x 0.98" H x 0.63" W



LINE VOLTAGE STATIC RED/AMBER LED NEON - 120V

Dome Profile / Side Bending / PVC

MOUNTING CHANNELS (CONTINUED)

NOTE: Leave a 0.5" to 1" gap between Neon power feed and mounting channel, to avoid undue stress on power feed cables.

ADJUSTABLE MOUNTING BRACKET

Recommended 3 brackets for every 39" channel

Adjusts in 15° increments, notches every 30°



Part Number: LLI-ND-MCL-ADJ
Dimensions: 1" L x 1.6" H x 1.8" W

