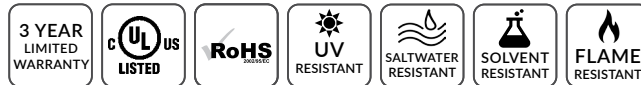
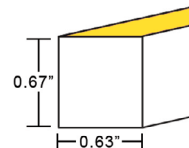
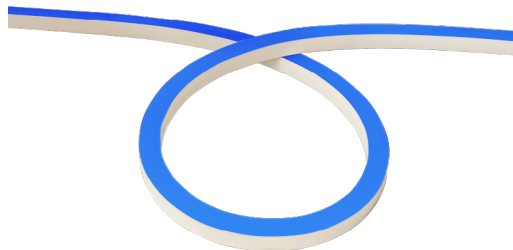


# STATIC GREEN/BLUE LED NEON - 24V

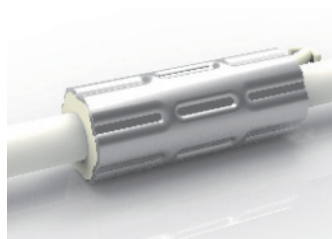
Square Profile / Side Bending / Silicone



## TECHNICAL INFORMATION

NOTE: All data has +/- 5% tolerance.

|                    |  |
|--------------------|--|
| WATTAGE            | 3.7W per foot  |
| IP RATING          | IP68 - wet locations. Protected against temporary submersion, limited protection against harsh environments. |
| PROFILE            | Square   |
| BEND ORIENTATION   | Side Bending   |
| HOUSING MATERIAL   | Silicone, UV resistant per ISO 4892-3  |
| OUTPUT             | Green (522-528nm) - 167 lm/ft<br>Blue (468-474nm) - 36 lm/ft   |
| INPUT VOLTAGE      | 24VDC  |
| SEGMENT LENGTH     | Every 2.2", not field-cuttable   |
| MAXIMUM RUN        | 32 feet  |
| DIMENSIONS         | 0.63" W x 0.67" H (16mm x 17mm)  |
| MINIMUM BEND       | 12" diameter   |
| INSTALLATION TEMP. | -40°F to 140°F   |
| OPERATING TEMP.    | -40°F to 140°F   |
| WARRANTY           | 3 year limited   |
| CONTROLS           | Receiver/decoder and controller required.  |
| POWER SUPPLY       | Compatible with all 24VDC power supplies - see page 8  |

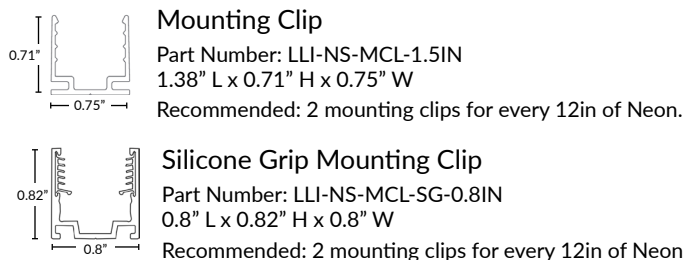


### ANTI-WICKING FERRULE

Standard on all LED Neon power cables. Located 4.5" from the connector. Protects against water ingress and circuit board corrosion. H 0.47" x W 1.18"

## MOUNTING OPTIONS (SOLD SEPARATELY)

More clips and channel options available (see page 5-7).



**NOTE:** Neon sections may be mounted end-to-end on the non-power feed end to create the appearance of longer runs. End-to-end Neon sections must have a 0.5" to 1" gap to allow for expansion/contraction. A dark spot may be visible at <20ft viewing distance.

## PART NUMBER BUILDER / ORDERING GUIDE

Example part number: LLI-N3.7W-68-SSS-GRN-24V-96in

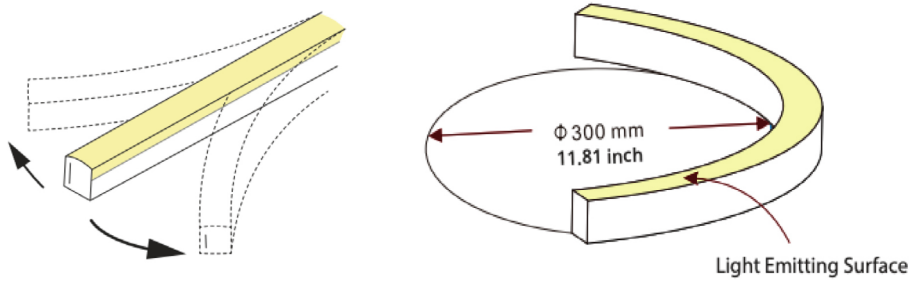
|           |           |      |  |         |                                      |
|-----------|-----------|------|--|---------|--------------------------------------|
| SERIES    | IP RATING | TYPE | COLOR  | VOLTAGE | LENGTH                               |
| LLI-N3.7W | 68        | SSS  | <input type="text"/>                           | 24V     | <input type="text"/>                 |
|           |           |      | GRN - Green, 167 lm/ft<br>BLU - Blue, 36 lm/ft |         | (enter length in inches, up to 384") |

# STATIC GREEN/BLUE LED NEON - 24V

Square Profile / Side Bending / Silicone

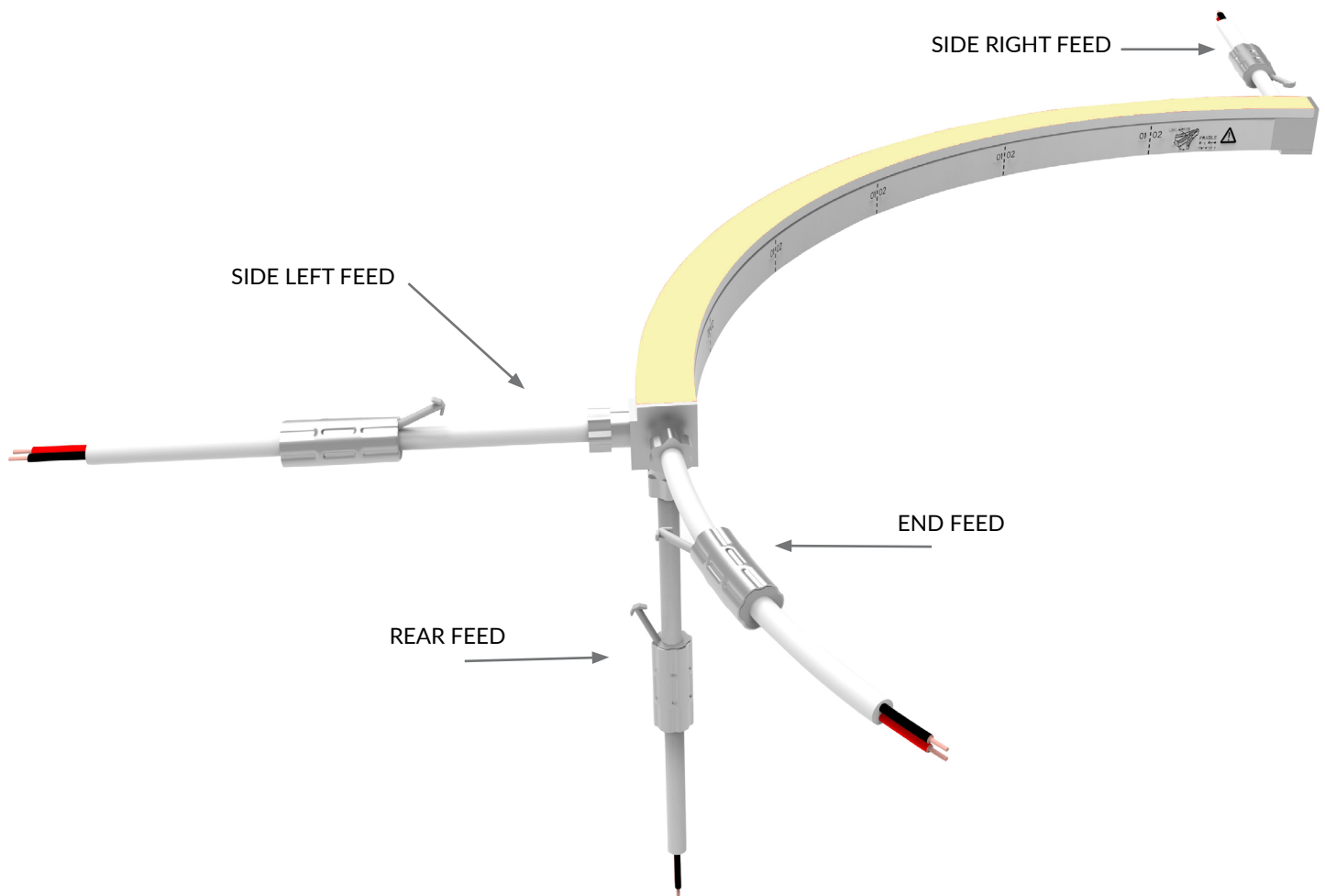
## ORIENTATION & MINIMUM BEND DIAMETER

---



## POWER FEED ORIENTATION GUIDE

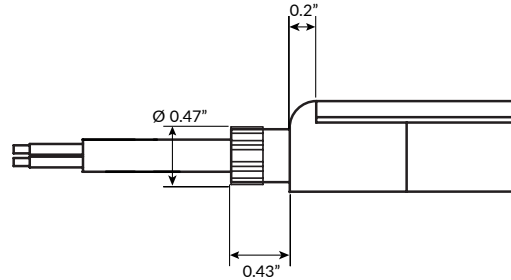
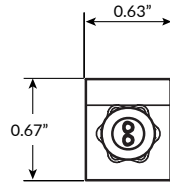
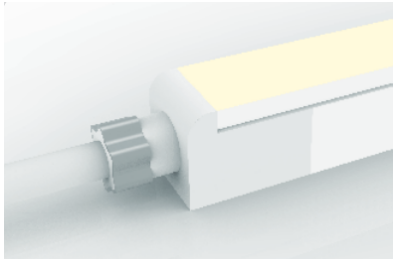
---



# STATIC GREEN/BLUE LED NEON - 24V

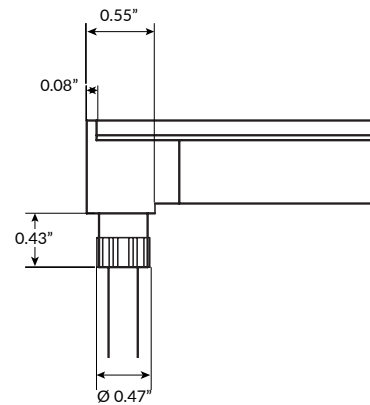
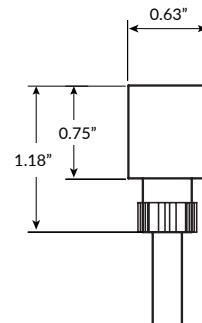
Square Profile / Side Bending / Silicone

## POWER FEED & TERMINATION OPTIONS (IP68)



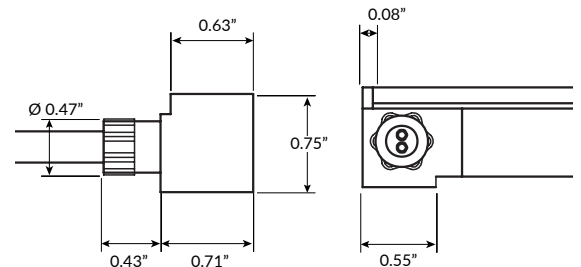
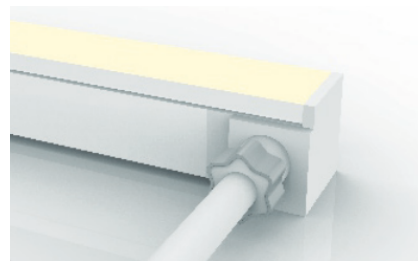
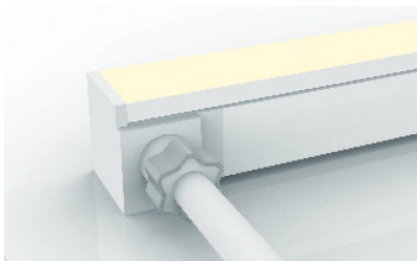
### End Power Feed

| SERIES            | LENGTH                          |
|-------------------|---------------------------------|
| LLI-NS-68-PWR2-EF | 39IN<br>118IN<br>196IN<br>393IN |



### Rear Power Feed

| SERIES            | LENGTH                          |
|-------------------|---------------------------------|
| LLI-NS-68-PWR2-RF | 39IN<br>118IN<br>196IN<br>393IN |



### Side Right Power Feed

| SERIES         | SIDE | LENGTH                          |
|----------------|------|---------------------------------|
| LLI-NS-68-PWR2 | SR   | 39IN<br>118IN<br>196IN<br>393IN |

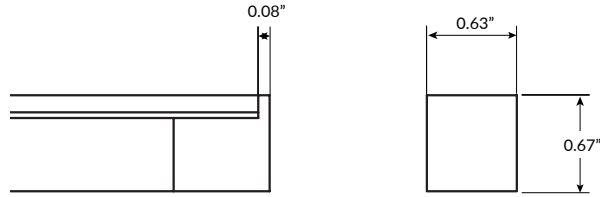
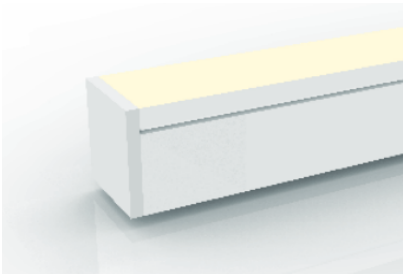
### Side Left Power Feed

| SERIES         | SIDE | LENGTH                          |
|----------------|------|---------------------------------|
| LLI-NS-68-PWR2 | SL   | 39IN<br>118IN<br>196IN<br>393IN |

# STATIC GREEN/BLUE LED NEON - 24V

Square Profile / Side Bending / Silicone

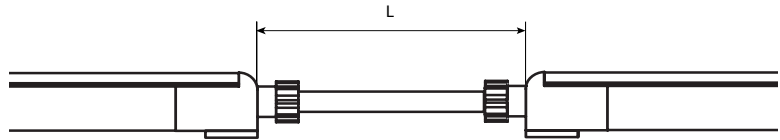
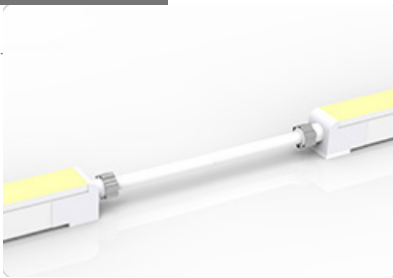
## POWER FEED & TERMINATION OPTIONS (IP68)



### End Cap

SERIES

LLI-NS-68-EC



### Jumper Power Connector (maximum 4 per run)

SERIES

SIDE LENGTH (L)

LLI-NS-68-CON2

|    |       |
|----|-------|
| SR | 12IN  |
| SL | 39IN  |
| EF | 78IN  |
| RF | 118IN |
|    | 196IN |
|    | 393IN |

# STATIC GREEN/BLUE LED NEON - 24V

Square Profile / Side Bending / Silicone

## OVERALL LENGTH / SEGMENT POINT GUIDE

Dimension tolerance of  $\pm 1/8"$ . Measurements listed below apply to Side Feed and Rear Feed Neon only. Add 1" to measurements below for End Feed Neon. Measurements below do not include area required for routing power wire. Add 1" distance to layout to account for routing end feed power wire. This product expands and contracts in varying ambient temperatures. If butting Neon end-to-end, add 1/2" to 1" gap between sections for expansion.

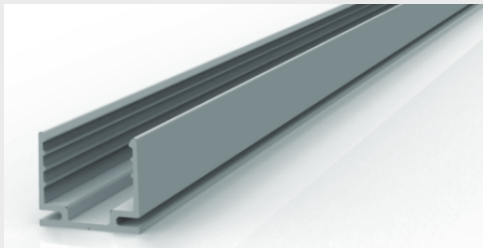
|        |        |        |        |        |        |        |        |        |        |        |        |
|--------|--------|--------|--------|--------|--------|--------|--------|--------|--------|--------|--------|
| 4.7"   | 6.9"   | 9.0"   | 11.2"  | 13.4"  | 15.6"  | 17.8"  | 20.0"  | 22.2"  | 24.4"  | 26.6"  | 28.8"  |
| 30.9"  | 33.1"  | 35.3"  | 37.5"  | 39.7"  | 41.9"  | 44.1"  | 46.3"  | 48.5"  | 50.7"  | 52.8"  | 55.0"  |
| 57.2"  | 59.4"  | 61.6"  | 63.8"  | 66.0"  | 68.2"  | 70.4"  | 72.6"  | 74.7"  | 76.9"  | 79.1"  | 81.3"  |
| 83.5"  | 85.7"  | 87.9"  | 90.1"  | 92.3"  | 94.5"  | 96.6"  | 98.8"  | 101.0" | 103.2" | 105.4" | 107.6" |
| 109.8" | 112.0" | 114.2" | 116.4" | 118.5" | 120.7" | 122.9" | 125.1" | 127.3" | 129.5" | 131.7" | 133.9" |
| 136.1" | 138.3" | 140.4" | 142.6" | 144.8" | 147.0" | 149.2" | 151.4" | 153.6" | 155.8" | 158.0" | 160.2" |
| 162.3" | 164.5" | 166.7" | 168.9" | 171.1" | 173.3" | 175.5" | 177.7" | 179.9" | 182.1" | 184.2" | 186.4" |
| 188.6" | 190.8" | 193.0" | 195.2" | 197.4" | 199.6" | 201.8" | 204.0" | 206.1" | 208.3" | 210.5" | 212.7" |
| 214.9" | 217.1" | 219.3" | 221.5" | 223.7" | 225.9" | 228.0" | 230.2" | 232.4" | 234.6" | 236.8" | 239.0" |
| 241.2" | 243.4" | 245.6" | 247.8" | 249.9" | 252.1" | 254.3" | 256.5" | 258.7" | 260.9" | 263.1" | 265.3" |
| 267.5" | 269.7" | 271.8" | 274.0" | 276.2" | 278.4" | 280.6" | 282.8" | 285.0" | 287.2" | 289.4" | 291.6" |
| 293.7" | 295.9" | 298.1" | 300.3" | 302.5" | 304.7" | 306.9" | 309.1" | 311.3" | 313.5" | 315.6" | 317.8" |
| 320.0" | 322.2" | 324.4" | 326.6" | 328.8" | 331.0" | 333.2" | 335.4" | 337.5" | 339.7" | 341.9" | 344.1" |
| 346.3" | 348.5" | 350.7" | 352.9" | 355.1" | 357.3" | 359.4" | 361.6" | 363.8" | 366.0" | 368.2" | 370.4" |
| 372.6" | 374.8" | 377.0" | 379.2" | 381.3" | 383.5" |        |        |        |        |        |        |

## MOUNTING OPTIONS

**NOTE:** Leave a 0.5" to 1" gap between Neon power feed and mounting channel, to avoid undue stress on power feed cables.

### ALUMINUM MOUNTING CHANNEL

Silver anodized finish



#### Mounting Clip

Recommended 2 clips every 12"

Part Number: LLI-NS-MCL-1.5IN

Dimensions: 1.5" L x 0.83" H x 0.74" W

#### 20" Mounting Channel

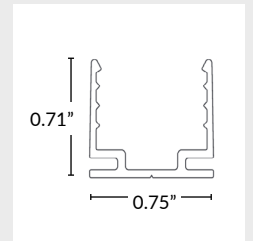
Part Number: LLI-NS-EXT-20IN

Dimensions: 20" L x 0.71" H x 0.75" W

#### 39" Mounting Channel

Part Number: LLI-NS-EXT-39IN

Dimensions: 39" L x 0.71" H x 0.75" W



### FLEXIBLE STAINLESS STEEL MOUNTING CHANNEL

Silver anodized finish



#### 4" Mounting Channel

Part Number: LLI-NS-EXT-F-4IN

Dimensions: 4" L x 0.79" H x 0.69" W

#### 12" Mounting Channel

Part Number: LLI-NS-EXT-F-12IN

Dimensions: 12" L x 0.79" H x 0.69" W

#### 20" Mounting Channel

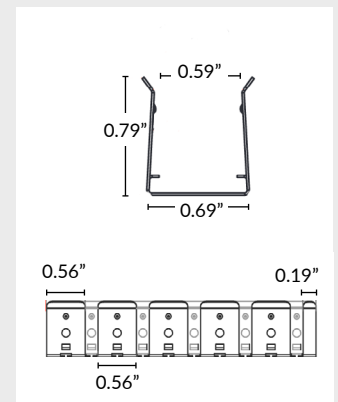
Part Number: LLI-NS-EXT-F-20IN

Dimensions: 20" L x 0.79" H x 0.69" W

#### 35" Mounting Channel

Part Number: LLI-NS-EXT-F-35IN

Dimensions: 35" L x 0.79" H x 0.69" W



# STATIC GREEN/BLUE LED NEON - 24V

Square Profile / Side Bending / Silicone

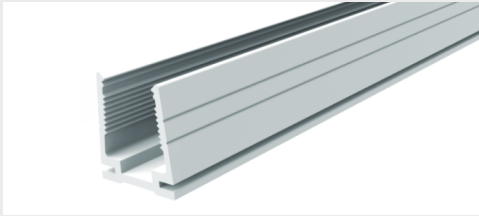
## MOUNTING CHANNELS

**NOTE:** Leave a 0.5" to 1" gap between Neon power feed and mounting channel, to avoid undue stress on power feed cables.

### PLASTIC MOUNTING CHANNEL

Use in submersible applications only

White finish



#### 20" Mounting Channel

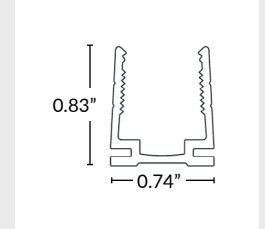
Part Number: LLI-NS-EXT-P-20IN

Dimensions: 20" L x 0.83" H x 0.74" W

#### 39" Mounting Channel

Part Number: LLI-NS-EXT-P-39IN

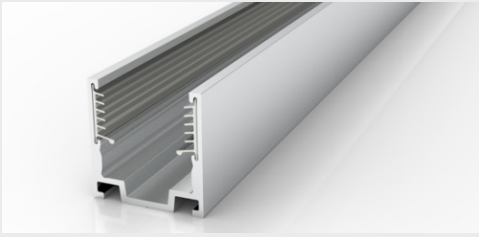
Dimensions: 39.4" L x 0.83" H x 0.74" W



### SILICONE GRIP ALUMINUM MOUNTING CHANNEL

Recommended for ceiling and wall applications

Silver anodized finish



#### Mounting Clip

Recommended 2 clips every 12"

Part Number: LLI-NS-MCL-SG-1.5IN

Dimensions: 1.5" L x 0.83" H x 0.74" W

#### 20" Mounting Channel

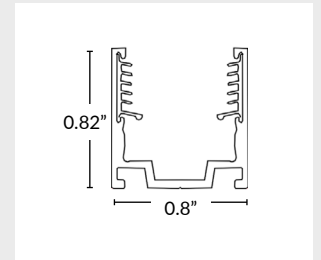
Part Number: LLI-NS-EXT-SG-20IN

Dimensions: 20" L x 0.82" H x 0.8" W

#### 39" Mounting Channel

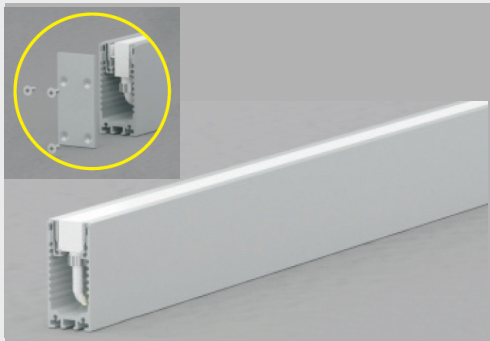
Part Number: LLI-NS-EXT-SG-39IN

Dimensions: 39.4" L x 0.82" H x 0.8" W



### ALUMINUM RACEWAY CHANNEL WITH SILICONE GRIP

Silver anodized finish



Two (2) endcaps and screws included.

#### 20" Mounting Channel

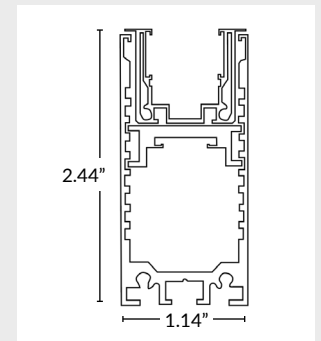
Part Number: LLI-NS-RCW-SG-20IN

Dimensions: 20" L x 2.44" H x 1.14" W

#### 39" Mounting Channel

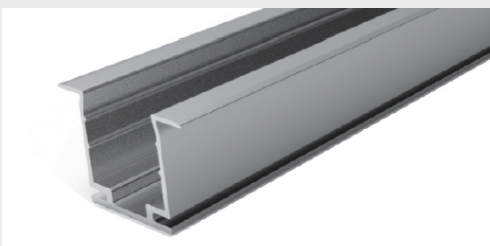
Part Number: LLI-NS-RCW-SG-39IN

Dimensions: 39.4" L x 2.44" H x 1.14" W



### RECESSED MOUNTING CHANNEL

Silver anodized finish



#### Mounting Clip

Recommended 2 clips every 12"

Part Number: LLI-NS-MCL-R-1.5IN

Dimensions: 1.5" L x 0.83" H x 1.1" W

#### 20" Mounting Channel

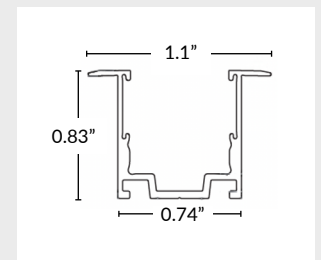
Part Number: LLI-NS-EXT-R-20IN

Dimensions: 20" L x 0.83" H x 1.1" W

#### 39" Mounting Channel

Part Number: LLI-NS-EXT-R-39IN

Dimensions: 39.4" L x 0.83" H x 1.1" W



# STATIC GREEN/BLUE LED NEON - 24V

Square Profile / Side Bending / Silicone

## MOUNTING CHANNELS (CONTINUED)

**NOTE:** Leave a 0.5" to 1" gap between Neon power feed and mounting channel, to avoid undue stress on power feed cables.

### SILICONE GRIP RECESSED CHANNEL

Recommended for ceiling and wall applications  
Silver anodized finish



#### Mounting Clip

Recommended 2 clips every 12"

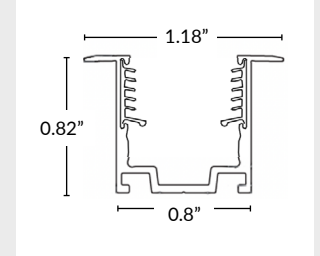
Part Number: LLI-NS-MCL-RSG-0.8IN  
Dimensions: 0.8" L x 0.82" H x 1.18" W

#### 20" Mounting Channel

Part Number: LLI-NS-EXT-RSG-20IN  
Dimensions: 20" L x 0.82" H x 1.18" W

#### 39" Mounting Channel

Part Number: LLI-NS-EXT-RSG-39IN  
Dimensions: 39.4" L x 0.82" H x 1.18" W

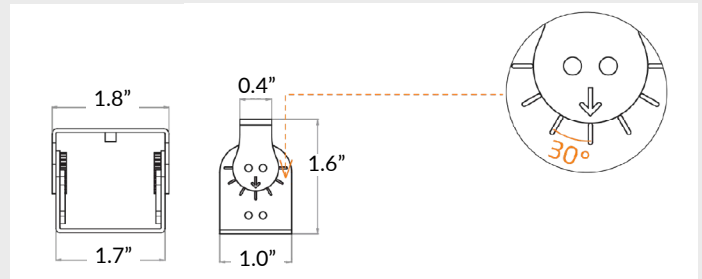


### ADJUSTABLE MOUNTING BRACKET

Recommended 3 brackets for every 39" channel  
Adjusts in 15° increments, notches every 30°



Part Number: LLI-NS-BKT-ADJ  
Dimensions: 1" L x 1.6" H x 1.8" W

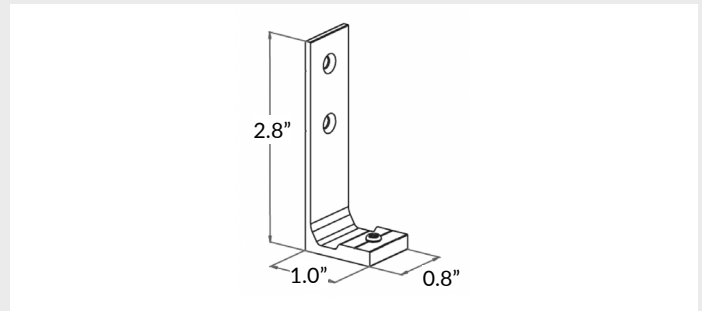


### SIDE MOUNTING BRACKET

Recommended 2 brackets for every 20" or 39" channel  
Not compatible with mounting clips



Part Number: LLI-NS-BKT-90D  
Dimensions: 0.8" L x 2.8" H x 1.0" W



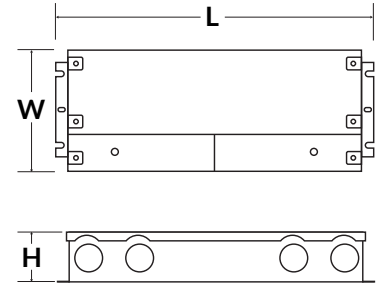
**POWER SUPPLIES** SOLD SEPARATELY

**DIMMABLE ELECTRONIC 0-10V**



Optimal performance dims to 0%.\*

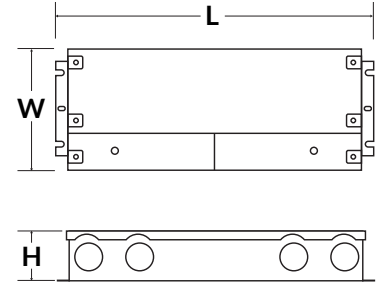
| PART NUMBER                  | CAPACITY | INPUT        | OUTPUT | CLASS   | LOCATION | L     | W    | H    |
|------------------------------|----------|--------------|--------|---------|----------|-------|------|------|
| LLI-PS-DE010-030W-24V-KO     | 30W      | 120V or 277V | 24V    | CLASS 2 | IP66 WET | 6.5"  | 3.6" | 1.6" |
| LLI-PS-DE010-060W-24V-KO     | 60W      | 120V or 277V | 24V    | CLASS 2 | IP66 WET | 7.4"  | 3.6" | 1.6" |
| LLI-PS-DE010-096W-24V-KO     | 96W      | 120V or 277V | 24V    | CLASS 2 | IP66 WET | 8.7"  | 3.7" | 1.7" |
| LLI-PS-DE010-192W-24V-CL2-KO | 2x96W    | 120V or 277V | 24V    | CLASS 2 | IP66 WET | 10.9" | 4.3" | 1.9" |
| LLI-PS-DE010-200W-24V-KO     | 200W     | 120V or 277V | 24V    | CLASS 1 | IP66 WET | 10.2" | 4.1" | 1.8" |
| LLI-PS-DE010-288W-24V-CL2-KO | 3x96W    | 120V or 277V | 24V    | CLASS 2 | IP66 WET | 11.9" | 4.3" | 1.9" |
| LLI-PS-DE010-300W-24V-KO     | 300W     | 120V or 277V | 24V    | CLASS 1 | IP66 WET | 10.9" | 4.3" | 1.8" |



**NON-DIMMABLE ELECTRONIC**



| PART NUMBER                | CAPACITY | INPUT    | OUTPUT | CLASS   | LOCATION | L     | W    | H     |
|----------------------------|----------|----------|--------|---------|----------|-------|------|-------|
| LLI-PS-NDE-030W-24V-KO     | 30W      | 100-277V | 24V    | CLASS 2 | IP66 WET | 6.5"  | 3.5" | 1.02" |
| LLI-PS-NDE-060W-24V-KO     | 60W      | 100-277V | 24V    | CLASS 2 | IP66 WET | 7.4"  | 3.5" | 1.2"  |
| LLI-PS-NDE-096W-24V-KO     | 96W      | 100-277V | 24V    | CLASS 2 | IP66 WET | 8.7"  | 3.7" | 1.7"  |
| LLI-PS-NDE-192W-24V-CL2-KO | 2x96W    | 100-277V | 24V    | CLASS 2 | IP66 WET | 10.9" | 4.1" | 1.9"  |
| LLI-PS-NDE-200W-24V-KO     | 200W     | 100-277V | 24V    | CLASS 1 | IP66 WET | 10.3" | 4.1" | 1.8"  |
| LLI-PS-NDE-288W-24V-CL2-KO | 3x96W    | 100-277V | 24V    | CLASS 2 | IP66 WET | 11.9" | 4.1" | 1.9"  |
| LLI-PS-NDE-300W-24V-KO     | 300W     | 100-277V | 24V    | CLASS 1 | IP66 WET | 10.9" | 4.3" | 1.8"  |

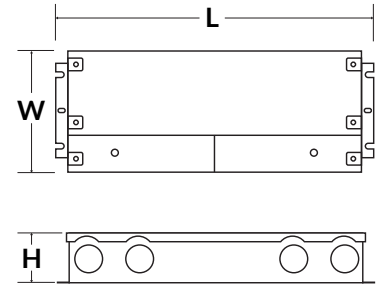


**DIMMABLE ELECTRONIC FLICKER-FREE**



Optimal performance dims to 2-5%.

| PART NUMBER                  | CAPACITY | INPUT    | OUTPUT | CLASS   | LOCATION | L     | W    | H    |
|------------------------------|----------|----------|--------|---------|----------|-------|------|------|
| LLI-PS-UDEFF-030W-24V-KO     | 30W      | 110-277V | 24V    | CLASS 2 | IP66 WET | 6.5"  | 3.6" | 1.0" |
| LLI-PS-UDEFF-060W-24V-KO     | 60W      | 110-277V | 24V    | CLASS 2 | IP66 WET | 7.4"  | 3.6" | 1.0" |
| LLI-PS-UDEFF-096W-24V-KO     | 96W      | 110-277V | 24V    | CLASS 2 | IP66 WET | 8.7"  | 3.7" | 1.6" |
| LLI-PS-UDEFF-192W-24V-CL2-KO | 2x96W    | 110-277V | 24V    | CLASS 2 | IP66 WET | 10.9" | 4.3" | 1.9" |
| LLI-PS-UDEFF-200W-24V-KO     | 200W     | 110-277V | 24V    | CLASS 1 | IP66 WET | 10.2" | 4.1" | 1.8" |
| LLI-PS-UDEFF-288W-24V-CL2-KO | 3x96W    | 110-277V | 24V    | CLASS 2 | IP66 WET | 11.9" | 4.3" | 1.9" |
| LLI-PS-UDEFF-300W-24V-KO     | 300W     | 110-277V | 24V    | CLASS 1 | IP66 WET | 11.0" | 4.3" | 1.8" |

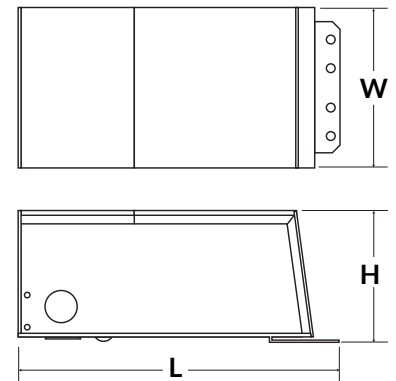


**DIMMABLE MAGNETIC**



Optimal performance dims to 5-10%.\*

| PART NUMBER               | CAPACITY | INPUT        | OUTPUT | CLASS   | LOCATION    | L      | W     | H     |
|---------------------------|----------|--------------|--------|---------|-------------|--------|-------|-------|
| LLI-PS-DM-020W-24V-KO     | 20W      | 120V or 277V | 24V    | CLASS 2 | NEMA 3R WET | 7.38"  | 2.11" | 1.60" |
| LLI-PS-DM-040W-24V-KO     | 40W      | 120V or 277V | 24V    | CLASS 2 | NEMA 3R WET | 7.38"  | 2.11" | 1.60" |
| LLI-PS-DM-060W-24V-KO     | 60W      | 120V or 277V | 24V    | CLASS 2 | NEMA 3R WET | 8.13"  | 3.93" | 1.59" |
| LLI-PS-DM-100W-24V-KO     | 100W     | 120V or 277V | 24V    | CLASS 2 | NEMA 3R WET | 8.13"  | 3.93" | 1.59" |
| LLI-PS-DM-150W-24V-KO     | 150W     | 120V or 277V | 24V    | CLASS 1 | NEMA 3R WET | 8.79"  | 4.15" | 3.41" |
| LLI-PS-DM-200W-24V-KO     | 200W     | 120V or 277V | 24V    | CLASS 1 | NEMA 3R WET | 8.79"  | 4.15" | 3.41" |
| LLI-PS-DM-300W-24V-KO     | 300W     | 120V or 277V | 24V    | CLASS 1 | NEMA 3R WET | 8.79"  | 4.15" | 3.41" |
| LLI-PS-DM-300W-24V-CL2-KO | 6 x 50W  | 120V or 277V | 24V    | CLASS 2 | NEMA 3R WET | 10.29" | 5.69" | 3.43" |
| LLI-PS-DM-600W-24V-KO     | 2 x 300W | 120V or 277V | 24V    | CLASS 1 | NEMA 3R WET | 10.29" | 6.79" | 4.68" |

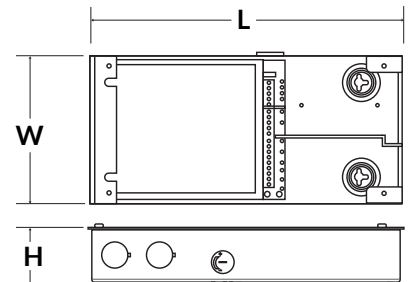


**LUTRON HI-LUME PREMIER 0.1% DIMMABLE ELECTRONIC**



Soft-on, Fade-to-Black, continuous flicker-free dimming from 100% to 0.1.

| PART NUMBER   | CAPACITY | INPUT    | OUTPUT | CLASS   | LOCATION | L     | W    | H    |
|---------------|----------|----------|--------|---------|----------|-------|------|------|
| L3D0-96W24V-U | 96W      | 120-277V | 24V    | CLASS 2 | IP20 DRY | 10.5" | 5.5" | 2.0" |



\*Performance can be affected by driver loading and dimmer type.