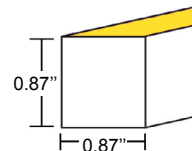


STATIC WHITE LED NEON - 24V

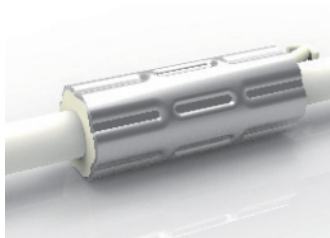
Square XL Profile / Side Bending / Silicone / High Output



TECHNICAL INFORMATION

NOTE: All data has +/- 10% tolerance.

| | |
|--------------------|--|
| WATTAGE | 5.5W per foot |
| IP RATING | IP68 - wet locations. Protected against temporary submersion, limited protection against harsh environments. |
| PROFILE | Square |
| BEND ORIENTATION | Side Bending |
| HOUSING MATERIAL | Silicone, UV resistant per ISO 4892-3 |
| OUTPUT | 2200K: 411 lm/ft 2700K: 444 lm/ft 3000K: 444 lm/ft 3500K: 460 lm/ft 4000K: 460 lm/ft 5700K: 444 lm/ft |
| CRI | 80+ |
| INPUT VOLTAGE | 24VDC |
| SEGMENT LENGTH | Every 2.19", not field-cuttable |
| MAXIMUM RUN | 19 feet |
| DIMENSIONS | 0.87" W x 0.87" H |
| MINIMUM BEND | 15.75" diameter |
| INSTALLATION TEMP. | -40°F to 140°F |
| OPERATING TEMP. | -40°F to 140°F |
| WARRANTY | 3 year limited |
| POWER SUPPLY | Compatible with 24VDC power supplies – see page 6 |

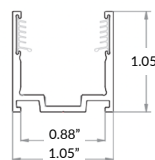


ANTI-WICKING FERRULE

Standard on all LED Neon power cables. Located 4.5" from the connector. Protects against water ingress and circuit board corrosion. H 0.47" x W 1.18"

MOUNTING OPTIONS (SOLD SEPARATELY)

See page 5 for more detail.



Silicone Grip Mounting Clip

Part Number: LLI-NSX-MCL-SG-0.8IN
0.80" L x 1.05" H x 1.05" W
Recommended: 2 mounting clips for every 12in of Neon.

Silicone Grip Mounting Channel

Part Number: LLI-NSX-EXT-SG-20IN/39IN
20" L/39" L x 1.05" H x 1.05" W

NOTE: Neon sections may be mounted end-to-end on the non-power feed end to create the appearance of longer runs. End-to-end Neon sections must have a 0.5" to 1" gap to allow for expansion/contraction. A dark spot may be visible at <20ft viewing distance.

PART NUMBER BUILDER / ORDERING GUIDE

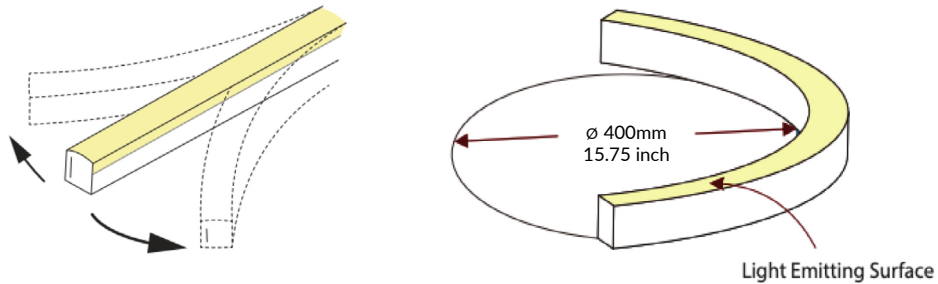
Example part number: LLI-N5.5W-68-SXSS-30K-24V-96in

| SERIES | IP RATING | TYPE | CCT | VOLTAGE | LENGTH |
|-----------|-----------|------|--|---------|------------------------------------|
| LLI-N5.5W | 68 | SXSS | | 24V | |
| | | | 22K - 411 lm/ft 27K - 444 lm/ft 30K - 444 lm/ft 35K - 460 lm/ft 40K - 460 lm/ft 57K - 444 lm/ft | | Enter length in inches, up to 228" |

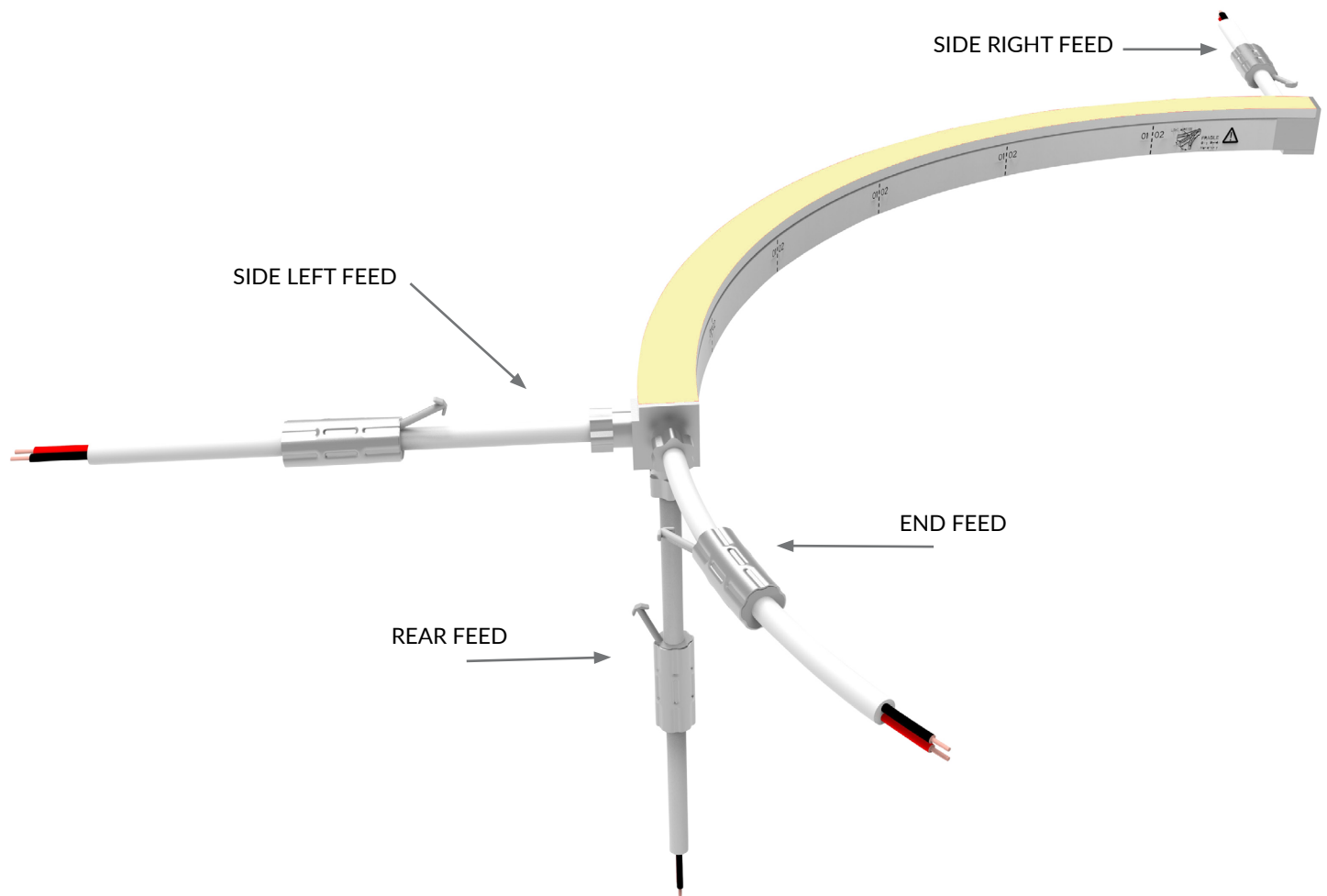
STATIC WHITE LED NEON - 24V

Square XL Profile / Side Bending / Silicone

ORIENTATION & MINIMUM BEND DIAMETER



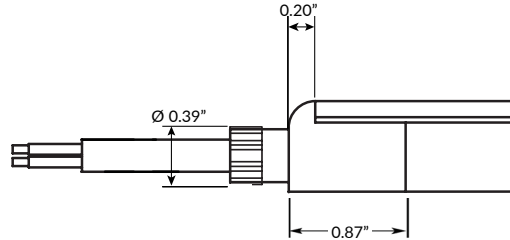
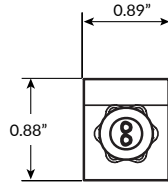
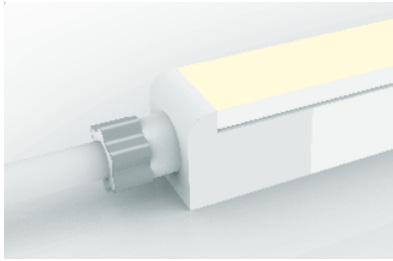
POWER FEED ORIENTATION GUIDE



STATIC WHITE LED NEON - 24V

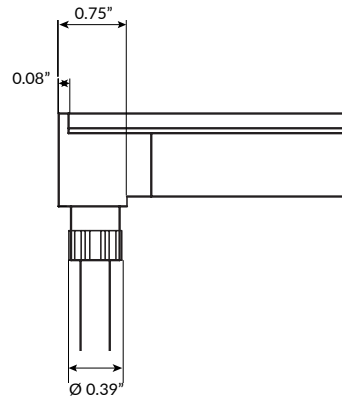
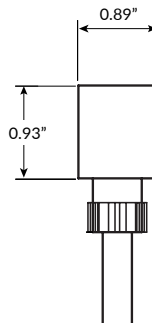
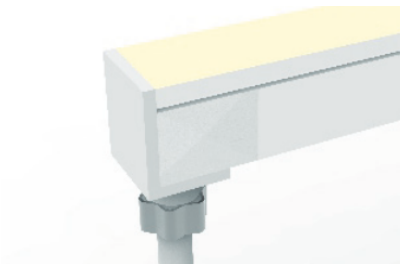
Square XL Profile / Side Bending / Silicone / High Output

POWER FEED & TERMINATION OPTIONS (IP68)



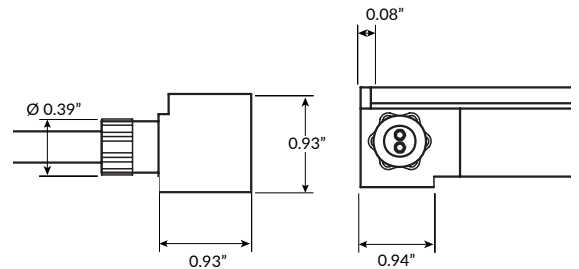
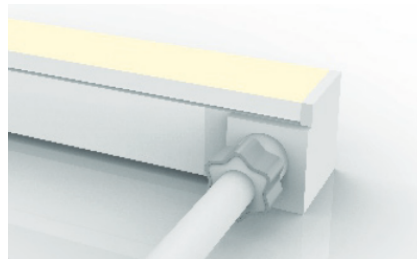
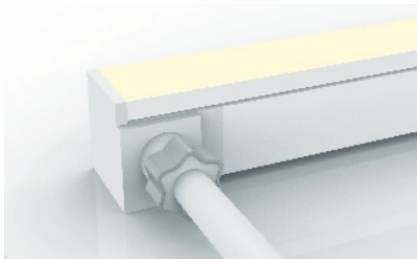
End Power Feed

| SERIES | LENGTH |
|--------------------|---------------------------------|
| LLI-NSX-68-PWR2-EF | 39IN 118IN 196IN 393IN |



Rear Power Feed

| SERIES | LENGTH |
|--------------------|---------------------------------|
| LLI-NSX-68-PWR2-RF | 39IN 118IN 196IN 393IN |



Side Right Power Feed

| SERIES | SIDE | LENGTH |
|-----------------|------|---------------------------------|
| LLI-NSX-68-PWR2 | SR | 39IN 118IN 196IN 393IN |

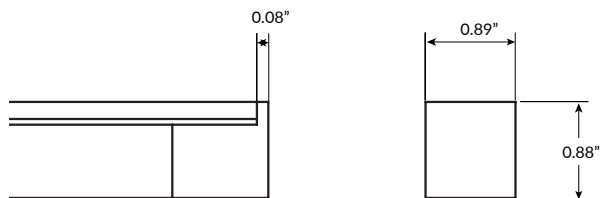
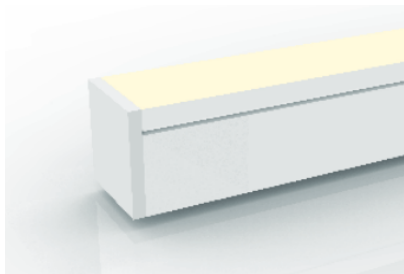
Side Left Power Feed

| SERIES | SIDE | LENGTH |
|-----------------|------|---------------------------------|
| LLI-NSX-68-PWR2 | SL | 39IN 118IN 196IN 393IN |

STATIC WHITE LED NEON - 24V

Square XL Profile / Side Bending / Silicone / High Output

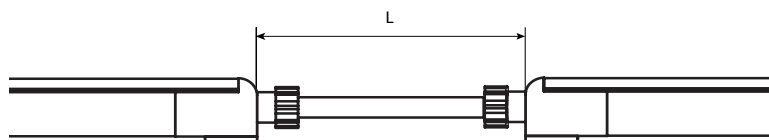
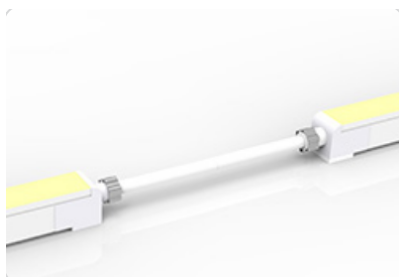
POWER FEED & TERMINATION OPTIONS (IP68)



End Cap

SERIES

LLI-NSX-68-EC



Jumper Power Connector (maximum 4 per run)

SERIES

SIDE LENGTH (L)

LLI-NSX-68-CON2

| | |
|----|-------|
| SR | 12IN |
| SL | 39IN |
| EF | 118IN |
| RF | 196IN |
| | 393IN |

STATIC WHITE LED NEON - 24V

Square XL Profile / Side Bending / Silicone / High Output

OVERALL LENGTH / SEGMENT POINT GUIDE

Dimension tolerance of $\pm 1/8"$. Measurements listed below apply to Side Feed and Rear Feed Neon only. Add 1" to measurements below for End Feed Neon. Measurements below do not include area required for routing power wire. Add 1" distance to layout to account for routing end feed power wire. This product expands and contracts in varying ambient temperatures. If butting Neon end-to-end, add 1/2" to 1" gap between sections for expansion.

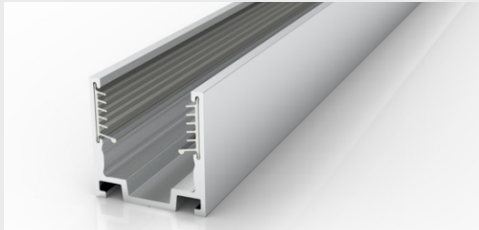
| | | | | | | | | | | | |
|--------|--------|--------|--------|--------|--------|--------|--------|--------|--------|--------|--------|
| 11.2" | 13.4" | 15.6" | 17.8" | 20.0" | 22.2" | 24.4" | 26.5" | 28.7" | 30.9" | 33.1" | 35.3" |
| 37.5" | 39.7" | 41.9" | 44.1" | 46.2" | 48.4" | 50.6" | 52.8" | 55.0" | 57.2" | 59.4" | 61.6" |
| 63.8" | 65.9" | 68.1" | 70.3" | 72.5" | 74.7" | 76.9" | 79.1" | 81.3" | 83.5" | 85.6" | 87.8" |
| 90.0" | 92.2" | 94.4" | 96.6" | 98.8" | 101.0" | 103.2" | 105.3" | 107.5" | 109.7" | 111.9" | 114.1" |
| 116.3" | 118.5" | 120.7" | 122.9" | 125.0" | 127.2" | 129.4" | 131.6" | 133.8" | 136.0" | 138.2" | 140.4" |
| 142.6" | 144.7" | 146.9" | 149.1" | 151.3" | 153.5" | 155.7" | 157.9" | 160.1" | 162.3" | 164.4" | 166.6" |
| 168.8" | 171.0" | 173.2" | 175.4" | 177.6" | 179.8" | 182.0" | 184.1" | 186.3" | 188.5" | 190.7" | 192.9" |
| 195.1" | 197.3" | 199.5" | 201.7" | 203.9" | 206.0" | 208.2" | 210.4" | 212.6" | 214.8" | 217.0" | 219.2" |
| 221.4" | 223.6" | 225.7" | 227.9" | | | | | | | | |

MOUNTING CHANNEL

NOTE: Leave a 0.5" to 1" gap between Neon power feed and mounting channel, to avoid undue stress on power feed cables.

SILICONE GRIP ALUMINUM MOUNTING CHANNEL

Recommended for ceiling and wall applications
Silver anodized finish



Mounting Clip

Recommended 2 clips every 12"

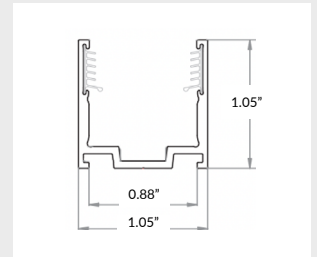
Part Number: LLI-NSX-MCL-SG-1.5IN
Dimensions: 0.8" L x 1.05" H x 1.05" W

20" Mounting Channel

Part Number: LLI-NSX-EXT-SG-20IN
Dimensions: 20" L x 1.05" H x 1.05" W

39" Mounting Channel

Part Number: LLI-NSX-EXT-SG-39IN
Dimensions: 39" L x 1.05" H x 1.05" W



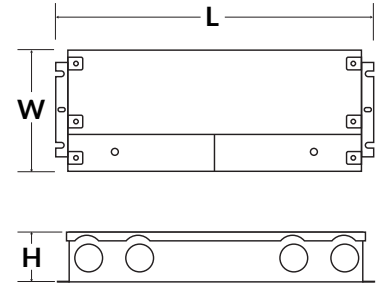
POWER SUPPLIES SOLD SEPARATELY

DIMMABLE ELECTRONIC 0-10V



Optimal performance dims to 0%.*

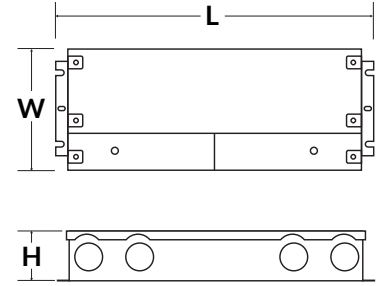
| PART NUMBER | CAPACITY | INPUT | OUTPUT | CLASS | LOCATION | L | W | H |
|------------------------------|----------|--------------|--------|---------|----------|-------|------|------|
| LLI-PS-DE010-030W-24V-KO | 30W | 120V or 277V | 24V | CLASS 2 | IP66 WET | 6.5" | 3.6" | 1.6" |
| LLI-PS-DE010-060W-24V-KO | 60W | 120V or 277V | 24V | CLASS 2 | IP66 WET | 7.4" | 3.6" | 1.6" |
| LLI-PS-DE010-096W-24V-KO | 96W | 120V or 277V | 24V | CLASS 2 | IP66 WET | 8.7" | 3.7" | 1.7" |
| LLI-PS-DE010-192W-24V-CL2-KO | 2x96W | 120V or 277V | 24V | CLASS 2 | IP66 WET | 10.9" | 4.3" | 1.9" |
| LLI-PS-DE010-200W-24V-KO | 200W | 120V or 277V | 24V | CLASS 1 | IP66 WET | 10.2" | 4.1" | 1.8" |
| LLI-PS-DE010-288W-24V-CL2-KO | 3x96W | 120V or 277V | 24V | CLASS 2 | IP66 WET | 11.9" | 4.3" | 1.9" |
| LLI-PS-DE010-300W-24V-KO | 300W | 120V or 277V | 24V | CLASS 1 | IP66 WET | 10.9" | 4.3" | 1.8" |



NON-DIMMABLE ELECTRONIC



| PART NUMBER | CAPACITY | INPUT | OUTPUT | CLASS | LOCATION | L | W | H |
|----------------------------|----------|----------|--------|---------|----------|-------|------|-------|
| LLI-PS-NDE-030W-24V-KO | 30W | 100-277V | 24V | CLASS 2 | IP66 WET | 6.5" | 3.5" | 1.02" |
| LLI-PS-NDE-060W-24V-KO | 60W | 100-277V | 24V | CLASS 2 | IP66 WET | 7.4" | 3.5" | 1.2" |
| LLI-PS-NDE-096W-24V-KO | 96W | 100-277V | 24V | CLASS 2 | IP66 WET | 8.7" | 3.7" | 1.7" |
| LLI-PS-NDE-192W-24V-CL2-KO | 2x96W | 100-277V | 24V | CLASS 2 | IP66 WET | 10.9" | 4.1" | 1.9" |
| LLI-PS-NDE-200W-24V-KO | 200W | 100-277V | 24V | CLASS 1 | IP66 WET | 10.3" | 4.1" | 1.8" |
| LLI-PS-NDE-288W-24V-CL2-KO | 3x96W | 100-277V | 24V | CLASS 2 | IP66 WET | 11.9" | 4.1" | 1.9" |
| LLI-PS-NDE-300W-24V-KO | 300W | 100-277V | 24V | CLASS 1 | IP66 WET | 10.9" | 4.3" | 1.8" |

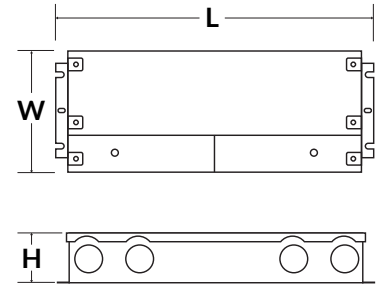


DIMMABLE ELECTRONIC FLICKER-FREE



Optimal performance dims to 2-5%.

| PART NUMBER | CAPACITY | INPUT | OUTPUT | CLASS | LOCATION | L | W | H |
|------------------------------|----------|----------|--------|---------|----------|-------|------|------|
| LLI-PS-UDEFF-030W-24V-KO | 30W | 110-277V | 24V | CLASS 2 | IP66 WET | 6.5" | 3.6" | 1.0" |
| LLI-PS-UDEFF-060W-24V-KO | 60W | 110-277V | 24V | CLASS 2 | IP66 WET | 7.4" | 3.6" | 1.0" |
| LLI-PS-UDEFF-096W-24V-KO | 96W | 110-277V | 24V | CLASS 2 | IP66 WET | 8.7" | 3.7" | 1.6" |
| LLI-PS-UDEFF-192W-24V-CL2-KO | 2x96W | 110-277V | 24V | CLASS 2 | IP66 WET | 10.9" | 4.3" | 1.9" |
| LLI-PS-UDEFF-200W-24V-KO | 200W | 110-277V | 24V | CLASS 1 | IP66 WET | 10.2" | 4.1" | 1.8" |
| LLI-PS-UDEFF-288W-24V-CL2-KO | 3x96W | 110-277V | 24V | CLASS 2 | IP66 WET | 11.9" | 4.3" | 1.9" |
| LLI-PS-UDEFF-300W-24V-KO | 300W | 110-277V | 24V | CLASS 1 | IP66 WET | 11.0" | 4.3" | 1.8" |

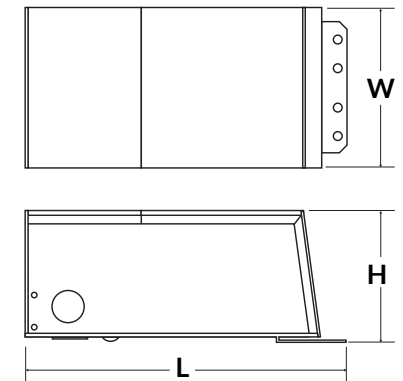


DIMMABLE MAGNETIC



Optimal performance dims to 5-10%.*

| PART NUMBER | CAPACITY | INPUT | OUTPUT | CLASS | LOCATION | L | W | H |
|---------------------------|----------|--------------|--------|---------|-------------|--------|-------|-------|
| LLI-PS-DM-020W-24V-KO | 20W | 120V or 277V | 24V | CLASS 2 | NEMA 3R WET | 7.38" | 2.11" | 1.60" |
| LLI-PS-DM-040W-24V-KO | 40W | 120V or 277V | 24V | CLASS 2 | NEMA 3R WET | 7.38" | 2.11" | 1.60" |
| LLI-PS-DM-060W-24V-KO | 60W | 120V or 277V | 24V | CLASS 2 | NEMA 3R WET | 8.13" | 3.93" | 1.59" |
| LLI-PS-DM-100W-24V-KO | 100W | 120V or 277V | 24V | CLASS 2 | NEMA 3R WET | 8.13" | 3.93" | 1.59" |
| LLI-PS-DM-150W-24V-KO | 150W | 120V or 277V | 24V | CLASS 1 | NEMA 3R WET | 8.79" | 4.15" | 3.41" |
| LLI-PS-DM-200W-24V-KO | 200W | 120V or 277V | 24V | CLASS 1 | NEMA 3R WET | 8.79" | 4.15" | 3.41" |
| LLI-PS-DM-300W-24V-KO | 300W | 120V or 277V | 24V | CLASS 1 | NEMA 3R WET | 8.79" | 4.15" | 3.41" |
| LLI-PS-DM-300W-24V-CL2-KO | 6 x 50W | 120V or 277V | 24V | CLASS 2 | NEMA 3R WET | 10.29" | 5.69" | 3.43" |
| LLI-PS-DM-600W-24V-KO | 2 x 300W | 120V or 277V | 24V | CLASS 1 | NEMA 3R WET | 10.29" | 6.79" | 4.68" |

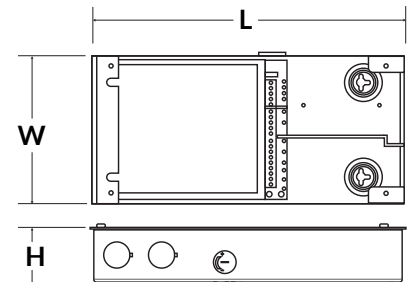


LUTRON HI-LUME PREMIER 0.1% DIMMABLE ELECTRONIC



Soft-on, Fade-to-Black, continuous flicker-free dimming from 100% to 0.1.

| PART NUMBER | CAPACITY | INPUT | OUTPUT | CLASS | LOCATION | L | W | H |
|---------------|----------|----------|--------|---------|----------|-------|------|------|
| L3D0-96W24V-U | 96W | 120-277V | 24V | CLASS 2 | IP20 DRY | 10.5" | 5.5" | 2.0" |



*Performance can be affected by driver loading and dimmer type.