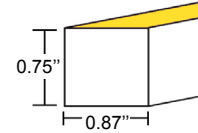


# STATIC WHITE LED NEON - 24V

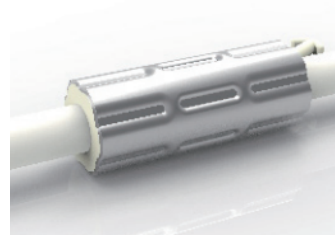
Square XL Profile / Top Bending / Silicone / High Output



## TECHNICAL INFORMATION

NOTE: All data has +/- 10% tolerance.

WATTAGE	5.5W per foot
IP RATING	IP68 - wet locations. Protected against temporary submersion, limited protection against harsh environments.
PROFILE	Square
BEND ORIENTATION	Top Bending
HOUSING MATERIAL	Silicone, UV resistant per ISO 4892-3
OUTPUT	2200K: 460 lm/ft 2700K: 510 lm/ft 3000K: 510 lm/ft 3500K: 542 lm/ft 4000K: 542 lm/ft 5700K: 510 lm/ft
CRI	80+
INPUT VOLTAGE	24VDC
SEGMENT LENGTH	Every 2.19", not field-cuttable
MAXIMUM RUN	19 feet
DIMENSIONS	0.87" W x 0.75" H
MINIMUM BEND	15.75" diameter
INSTALLATION TEMP.	-40°F to 140°F
OPERATING TEMP.	-40°F to 140°F
WARRANTY	3 year limited
POWER SUPPLY	Compatible with 24VDC power supplies - see page 6

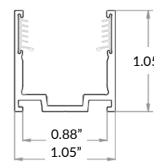


### ANTI-WICKING FERRULE

Standard on all LED Neon power cables. Located 4.5" from the connector. Protects against water ingress and circuit board corrosion. H 0.47" x W 1.18"

## MOUNTING OPTIONS (SOLD SEPARATELY)

See page 5 for more detail.



### Silicone Grip Mounting Clip

Part Number: LLI-NSX-MCL-SG-0.8IN  
0.80" L x 1.05" H x 1.05" W

Recommended: 2 mounting clips for every 12in of Neon.

### Silicone Grip Mounting Channel

Part Number: LLI-NSX-EXT-SG-20IN/39IN  
20" L/39" L x 1.05" H x 1.05" W

**NOTE:** Neon sections may be mounted end-to-end on the non-power feed end to create the appearance of longer runs. End-to-end Neon sections must have a 0.5" to 1" gap to allow for expansion/contraction. A dark spot may be visible at <20ft viewing distance.

## PART NUMBER BUILDER / ORDERING GUIDE

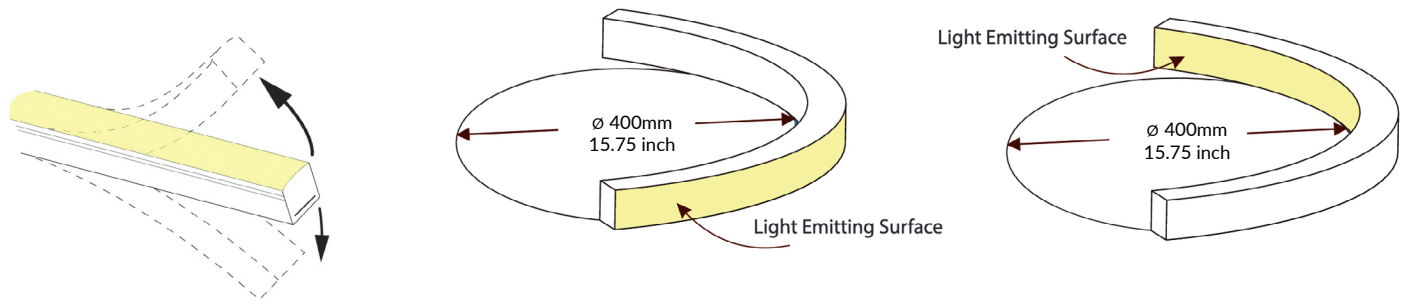
Example part number: LLI-N5.5W-68-SXTS-30K-24V-96in

SERIES	IP RATING	TYPE	CCT	VOLTAGE	LENGTH
LLI-N5.5W	68	SXTS		24V	
			22K - 460 lm/ft		Enter length in inches, up to 228"
			27K - 510 lm/ft		
			30K - 510 lm/ft		
			35K - 542 lm/ft		
			40K - 542 lm/ft		
			57K - 510 lm/ft		

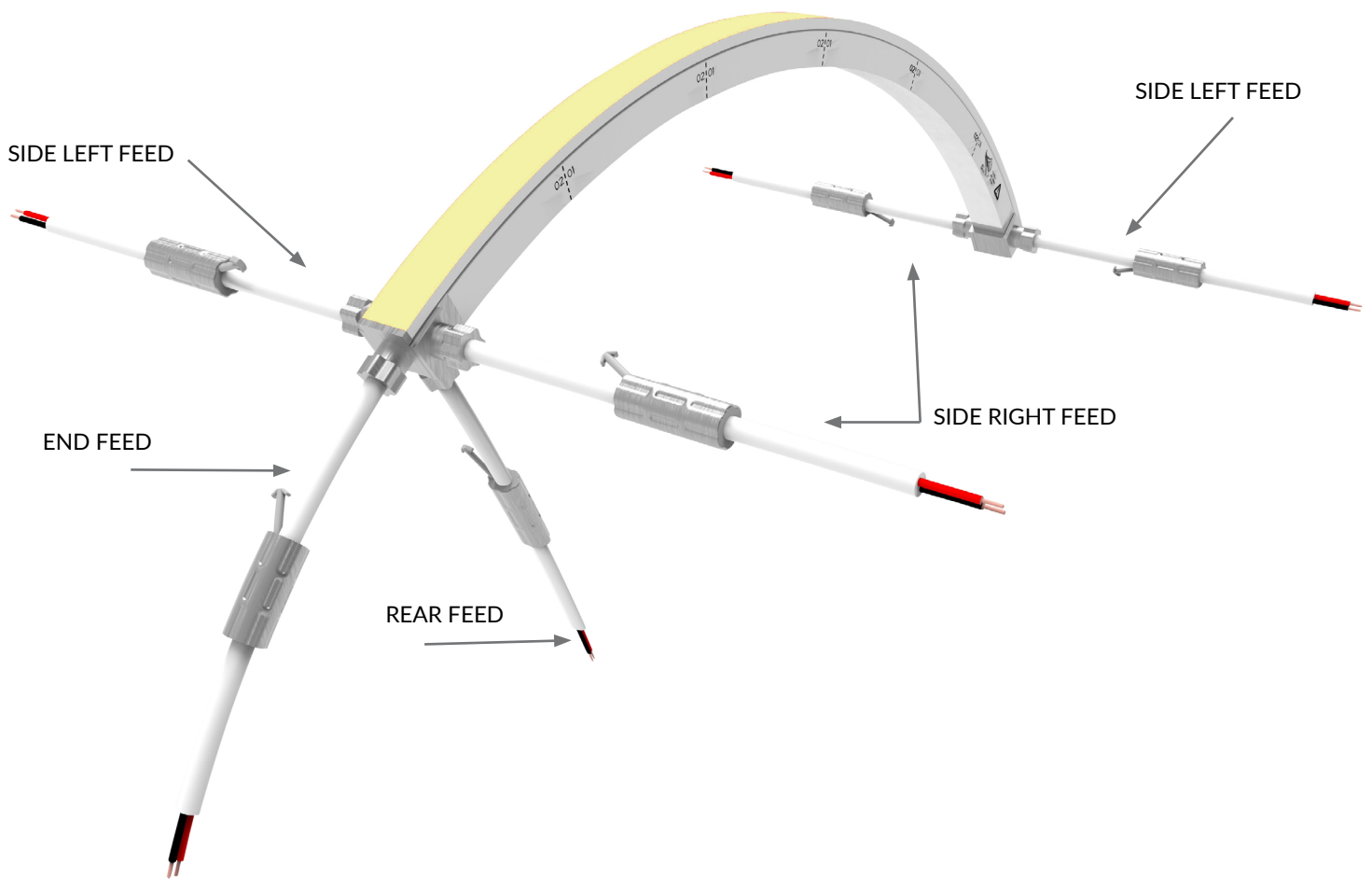
# STATIC WHITE LED NEON - 24V

Square XL Profile / Top Bending / Silicone / High Output

## ORIENTATION & MINIMUM BEND DIAMETER



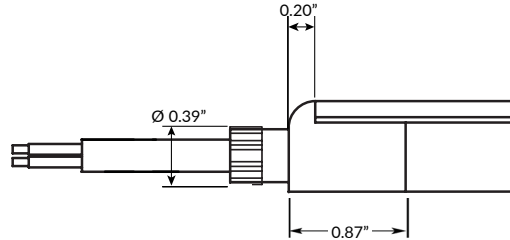
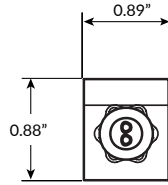
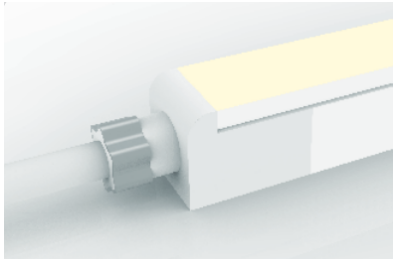
## POWER FEED ORIENTATION GUIDE



# STATIC WHITE LED NEON - 24V

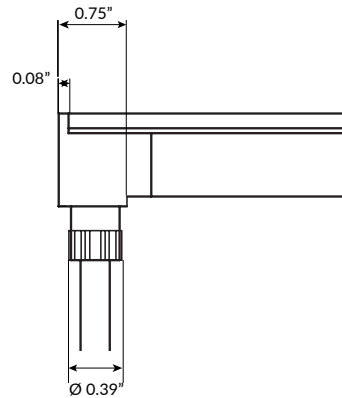
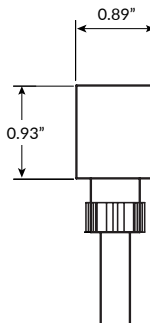
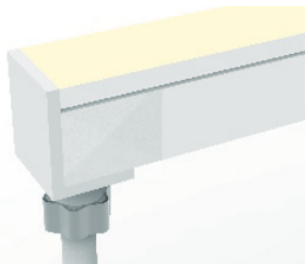
Square XL Profile / Top Bending / Silicone / High Output

## POWER FEED & TERMINATION OPTIONS (IP68)



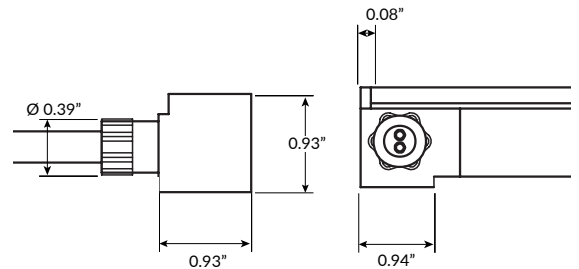
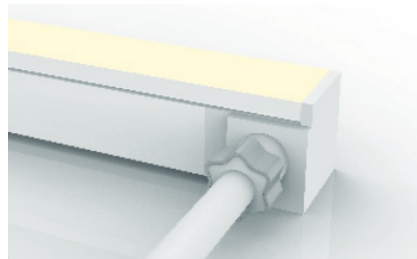
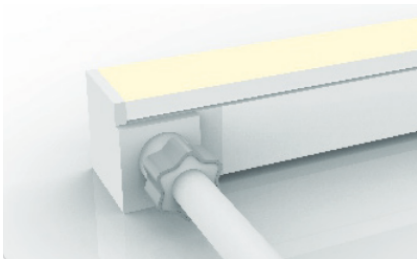
### End Power Feed

SERIES	LENGTH
LLI-NSX-68-PWR2-EF	39IN 118IN 196IN 393IN



### Rear Power Feed

SERIES	LENGTH
LLI-NSX-68-PWR2-RF	39IN 118IN 196IN 393IN



### Side Right Power Feed

SERIES	SIDE	LENGTH
LLI-NSX-68-PWR2	SR	39IN 118IN 196IN 393IN

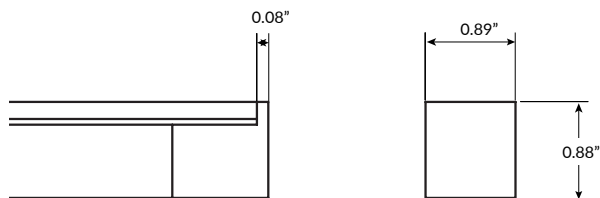
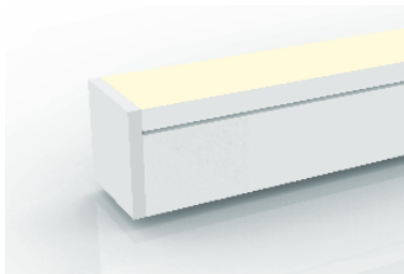
### Side Left Power Feed

SERIES	SIDE	LENGTH
LLI-NSX-68-PWR2	SL	39IN 118IN 196IN 393IN

# STATIC WHITE LED NEON - 24V

Square XL Profile / Top Bending / Silicone / High Output

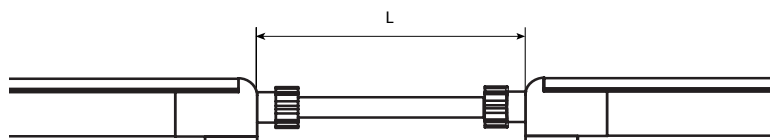
## POWER FEED & TERMINATION OPTIONS (IP68)



### End Cap

SERIES

LLI-NSX-68-EC



### Jumper Power Connector (maximum 4 per run)

SERIES

SIDE LENGTH (L)

LLI-NSX-68-CON2

SR	12IN
SL	39IN
EF	118IN
RF	196IN
	393IN

# STATIC WHITE LED NEON - 24V

Square XL Profile / Top Bending / Silicone / High Output

## OVERALL LENGTH / SEGMENT POINT GUIDE

Dimension tolerance of  $\pm 1/8"$ . Measurements listed below apply to Side Feed and Rear Feed Neon only. Add 1" to measurements below for End Feed Neon. Measurements below do not include area required for routing power wire. Add 1" distance to layout to account for routing end feed power wire. This product expands and contracts in varying ambient temperatures. If butting Neon end-to-end, add 1/2" to 1" gap between sections for expansion.

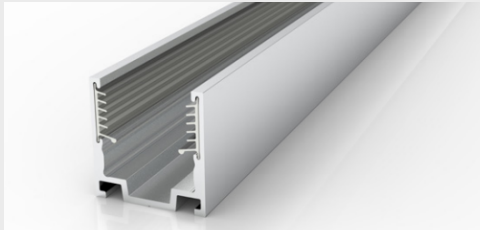
11.2"	13.4"	15.6"	17.8"	20.0"	22.2"	24.4"	26.5"	28.7"	30.9"	33.1"	35.3"
37.5"	39.7"	41.9"	44.1"	46.2"	48.4"	50.6"	52.8"	55.0"	57.2"	59.4"	61.6"
63.8"	65.9"	68.1"	70.3"	72.5"	74.7"	76.9"	79.1"	81.3"	83.5"	85.6"	87.8"
90.0"	92.2"	94.4"	96.6"	98.8"	101.0"	103.2"	105.3"	107.5"	109.7"	111.9"	114.1"
116.3"	118.5"	120.7"	122.9"	125.0"	127.2"	129.4"	131.6"	133.8"	136.0"	138.2"	140.4"
142.6"	144.7"	146.9"	149.1"	151.3"	153.5"	155.7"	157.9"	160.1"	162.3"	164.4"	166.6"
168.8"	171.0"	173.2"	175.4"	177.6"	179.8"	182.0"	184.1"	186.3"	188.5"	190.7"	192.9"
195.1"	197.3"	199.5"	201.7"	203.9"	206.0"	208.2"	210.4"	212.6"	214.8"	217.0"	219.2"
221.4"	223.6"	225.7"	227.9"								

## MOUNTING CHANNEL

**NOTE:** Leave a 0.5" to 1" gap between Neon power feed and mounting channel, to avoid undue stress on power feed cables.

### SILICONE GRIP ALUMINUM MOUNTING CHANNEL

Recommended for ceiling and wall applications  
Silver anodized finish



#### Mounting Clip

Recommended 2 clips every 12"

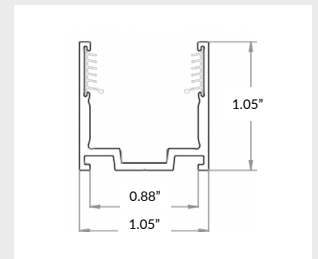
Part Number: LLI-NSX-MCL-SG-1.5IN  
Dimensions: 0.8" L x 1.05" H x 1.05" W

#### 20" Mounting Channel

Part Number: LLI-NSX-EXT-SG-20IN  
Dimensions: 20" L x 1.05" H x 1.05" W

#### 39" Mounting Channel

Part Number: LLI-NSX-EXT-SG-39IN  
Dimensions: 39" L x 1.05" H x 1.05" W



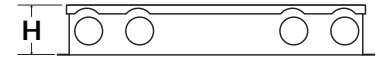
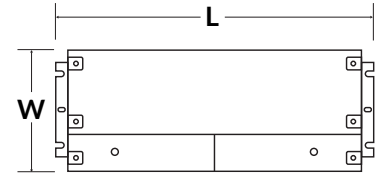
**POWER SUPPLIES** SOLD SEPARATELY

**DIMMABLE ELECTRONIC 0-10V**



Optimal performance dims to 0%.\*

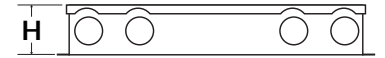
PART NUMBER	CAPACITY	INPUT	OUTPUT	CLASS	LOCATION	L	W	H
LLI-PS-DE010-030W-24V-KO	30W	120V or 277V	24V	CLASS 2	IP66 WET	6.5"	3.6"	1.6"
LLI-PS-DE010-060W-24V-KO	60W	120V or 277V	24V	CLASS 2	IP66 WET	7.4"	3.6"	1.6"
LLI-PS-DE010-096W-24V-KO	96W	120V or 277V	24V	CLASS 2	IP66 WET	8.7"	3.7"	1.7"
LLI-PS-DE010-192W-24V-CL2-KO	2x96W	120V or 277V	24V	CLASS 2	IP66 WET	10.9"	4.3"	1.9"
LLI-PS-DE010-200W-24V-KO	200W	120V or 277V	24V	CLASS 1	IP66 WET	10.2"	4.1"	1.8"
LLI-PS-DE010-288W-24V-CL2-KO	3x96W	120V or 277V	24V	CLASS 2	IP66 WET	11.9"	4.3"	1.9"
LLI-PS-DE010-300W-24V-KO	300W	120V or 277V	24V	CLASS 1	IP66 WET	10.9"	4.3"	1.8"



**NON-DIMMABLE ELECTRONIC**



PART NUMBER	CAPACITY	INPUT	OUTPUT	CLASS	LOCATION	L	W	H
LLI-PS-NDE-030W-24V-KO	30W	100-277V	24V	CLASS 2	IP66 WET	6.5"	3.5"	1.02"
LLI-PS-NDE-060W-24V-KO	60W	100-277V	24V	CLASS 2	IP66 WET	7.4"	3.5"	1.2"
LLI-PS-NDE-096W-24V-KO	96W	100-277V	24V	CLASS 2	IP66 WET	8.7"	3.7"	1.7"
LLI-PS-NDE-192W-24V-CL2-KO	2x96W	100-277V	24V	CLASS 2	IP66 WET	10.9"	4.1"	1.9"
LLI-PS-NDE-200W-24V-KO	200W	100-277V	24V	CLASS 1	IP66 WET	10.3"	4.1"	1.8"
LLI-PS-NDE-288W-24V-CL2-KO	3x96W	100-277V	24V	CLASS 2	IP66 WET	11.9"	4.1"	1.9"
LLI-PS-NDE-300W-24V-KO	300W	100-277V	24V	CLASS 1	IP66 WET	10.9"	4.3"	1.8"

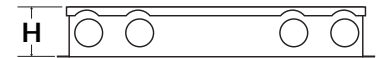
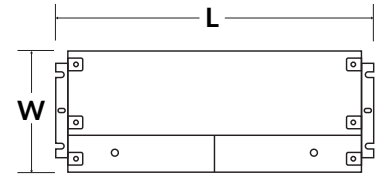


**DIMMABLE ELECTRONIC FLICKER-FREE**



Optimal performance dims to 2-5%.

PART NUMBER	CAPACITY	INPUT	OUTPUT	CLASS	LOCATION	L	W	H
LLI-PS-UDEFF-030W-24V-KO	30W	110-277V	24V	CLASS 2	IP66 WET	6.5"	3.6"	1.0"
LLI-PS-UDEFF-060W-24V-KO	60W	110-277V	24V	CLASS 2	IP66 WET	7.4"	3.6"	1.0"
LLI-PS-UDEFF-096W-24V-KO	96W	110-277V	24V	CLASS 2	IP66 WET	8.7"	3.7"	1.6"
LLI-PS-UDEFF-192W-24V-CL2-KO	2x96W	110-277V	24V	CLASS 2	IP66 WET	10.9"	4.3"	1.9"
LLI-PS-UDEFF-200W-24V-KO	200W	110-277V	24V	CLASS 1	IP66 WET	10.2"	4.1"	1.8"
LLI-PS-UDEFF-288W-24V-CL2-KO	3x96W	110-277V	24V	CLASS 2	IP66 WET	11.9"	4.3"	1.9"
LLI-PS-UDEFF-300W-24V-KO	300W	110-277V	24V	CLASS 1	IP66 WET	11.0"	4.3"	1.8"

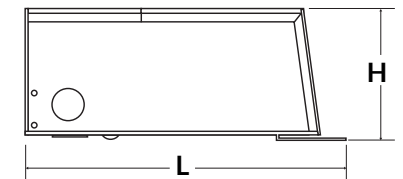
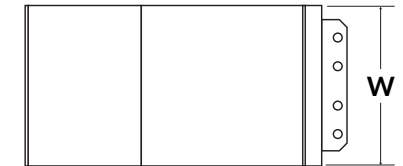


**DIMMABLE MAGNETIC**



Optimal performance dims to 5-10%.\*

PART NUMBER	CAPACITY	INPUT	OUTPUT	CLASS	LOCATION	L	W	H
LLI-PS-DM-020W-24V-KO	20W	120V or 277V	24V	CLASS 2	NEMA 3R WET	7.38"	2.11"	1.60"
LLI-PS-DM-040W-24V-KO	40W	120V or 277V	24V	CLASS 2	NEMA 3R WET	7.38"	2.11"	1.60"
LLI-PS-DM-060W-24V-KO	60W	120V or 277V	24V	CLASS 2	NEMA 3R WET	8.13"	3.93"	1.59"
LLI-PS-DM-100W-24V-KO	100W	120V or 277V	24V	CLASS 2	NEMA 3R WET	8.13"	3.93"	1.59"
LLI-PS-DM-150W-24V-KO	150W	120V or 277V	24V	CLASS 1	NEMA 3R WET	8.79"	4.15"	3.41"
LLI-PS-DM-200W-24V-KO	200W	120V or 277V	24V	CLASS 1	NEMA 3R WET	8.79"	4.15"	3.41"
LLI-PS-DM-300W-24V-KO	300W	120V or 277V	24V	CLASS 1	NEMA 3R WET	8.79"	4.15"	3.41"
LLI-PS-DM-300W-24V-CL2-KO	6 x 50W	120V or 277V	24V	CLASS 2	NEMA 3R WET	10.29"	5.69"	3.43"
LLI-PS-DM-600W-24V-KO	2 x 300W	120V or 277V	24V	CLASS 1	NEMA 3R WET	10.29"	6.79"	4.68"

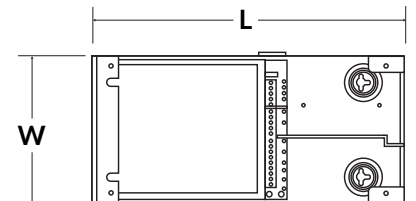


**LUTRON HI-LUME PREMIER 0.1% DIMMABLE ELECTRONIC**



Soft-on, Fade-to-Black, continuous flicker-free dimming from 100% to 0.1.

PART NUMBER	CAPACITY	INPUT	OUTPUT	CLASS	LOCATION	L	W	H
L3D0-96W24V-U	96W	120-277V	24V	CLASS 2	IP20 DRY	10.5"	5.5"	2.0"



\*Performance can be affected by driver loading and dimmer type.