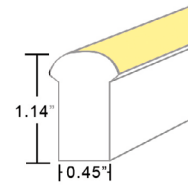
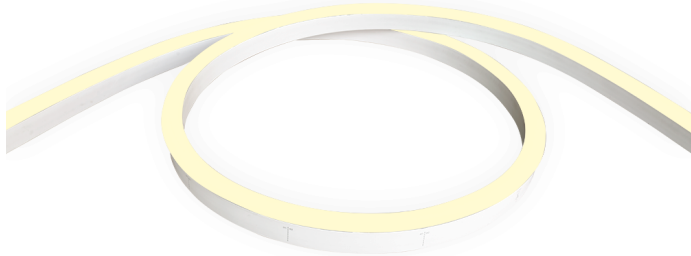


# STATIC WHITE LED NEON - HIGH TEMP. - 24V

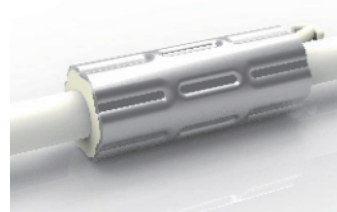
Dome Profile / Side Bending / Silicone



## TECHNICAL INFORMATION

NOTE: All data has +/- 5% tolerance.

WATTAGE	1.9W per foot
IP RATING	IP68 - wet locations. Protected against temporary submersion, limited protection against harsh environments.
APPLICATION	Designed specifically for use in high ambient temperature applications such as wet or dry saunas.
PROFILE	Dome
BEND ORIENTATION	Side Bending
HOUSING MATERIAL	Silicone, UV resistant per ISO 4892-3
OUTPUT	2200K (2238 ±102K) - 58 lm/ft 2700K (2725 ±120K) - 72 lm/ft 3000K (3045 ±175K) - 72 lm/ft 3500K (3525 ±202K) - 72 lm/ft 4000K (3985 ±245K) - 72 lm/ft 5700K (5669 ±355K) - 72 lm/ft
INPUT VOLTAGE	24VDC
CRI	80+
SEGMENT LENGTH	Every 3.3", not field-cuttable
MAXIMUM RUN	32 feet (single feed power)
DIMENSIONS	0.45" W x 1.14" H (11.5mm x 29mm)
MINIMUM BEND	4.72" diameter
INSTALLATION TEMP.	-40°F to 140°F
OPERATING TEMP.	-40°F to 140°F
WARRANTY	3 year limited
POWER SUPPLY	Compatible with all dimmable 24VDC power supplies - see power supply section of website. Consult power supply specification sheet for max. operating temperature before locating power supply.



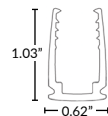
### ANTI-WICKING FERRULE

Standard on all LED Neon power cables. Located 4.5" from the connector. Protects against water ingress and circuit board corrosion.

H 0.47" x W 1.18"

### MOUNTING CLIP OPTIONS (SOLD SEPARATELY)

More options and channels available (page 6-8). Recommended 2 clips per 12" of Neon.

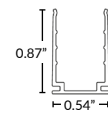


#### Anti-Corrosion Reinforced Plastic Mounting Clip

Recommended for submersion

Part Number: LLI-ND-EXT-CP-1.5IN

Dimensions: 1.5" L x 1.03" H x 0.62" W



#### Aluminum Mounting Clip

Part Number: LLI-ND-MCL-1.5IN

1.38" L x 0.87" H x 0.54" W

**NOTE:** Neon sections may be mounted end-to-end on the non-power feed end to create the appearance of longer runs. End-to-end Neon sections must have a 0.5" to 1" gap to allow for expansion/contraction. A dark spot may be visible at <20ft viewing distance.

## PART NUMBER BUILDER / ORDERING GUIDE

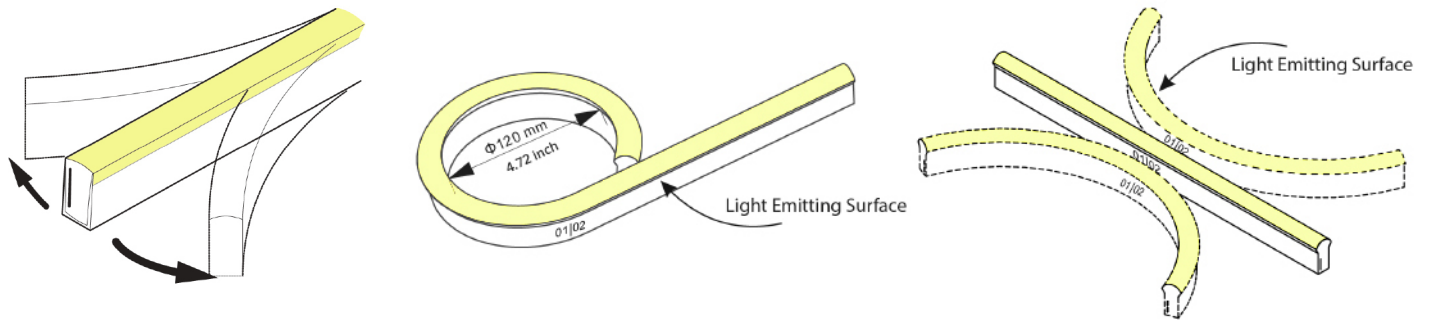
Example part number: LLI-NH1.9W-68-DSS-30K-24V-96in

SERIES	IP RATING	TYPE	CCT	VOLTAGE	LENGTH
LLI-NH1.9W	68	DSS		24V	
			22K - 58 lm/ft 27K - 72 lm/ft 30K - 72 lm/ft 35K - 72 lm/ft 40K - 72 lm/ft 57K - 72 lm/ft		(enter length in inches, up to 384")

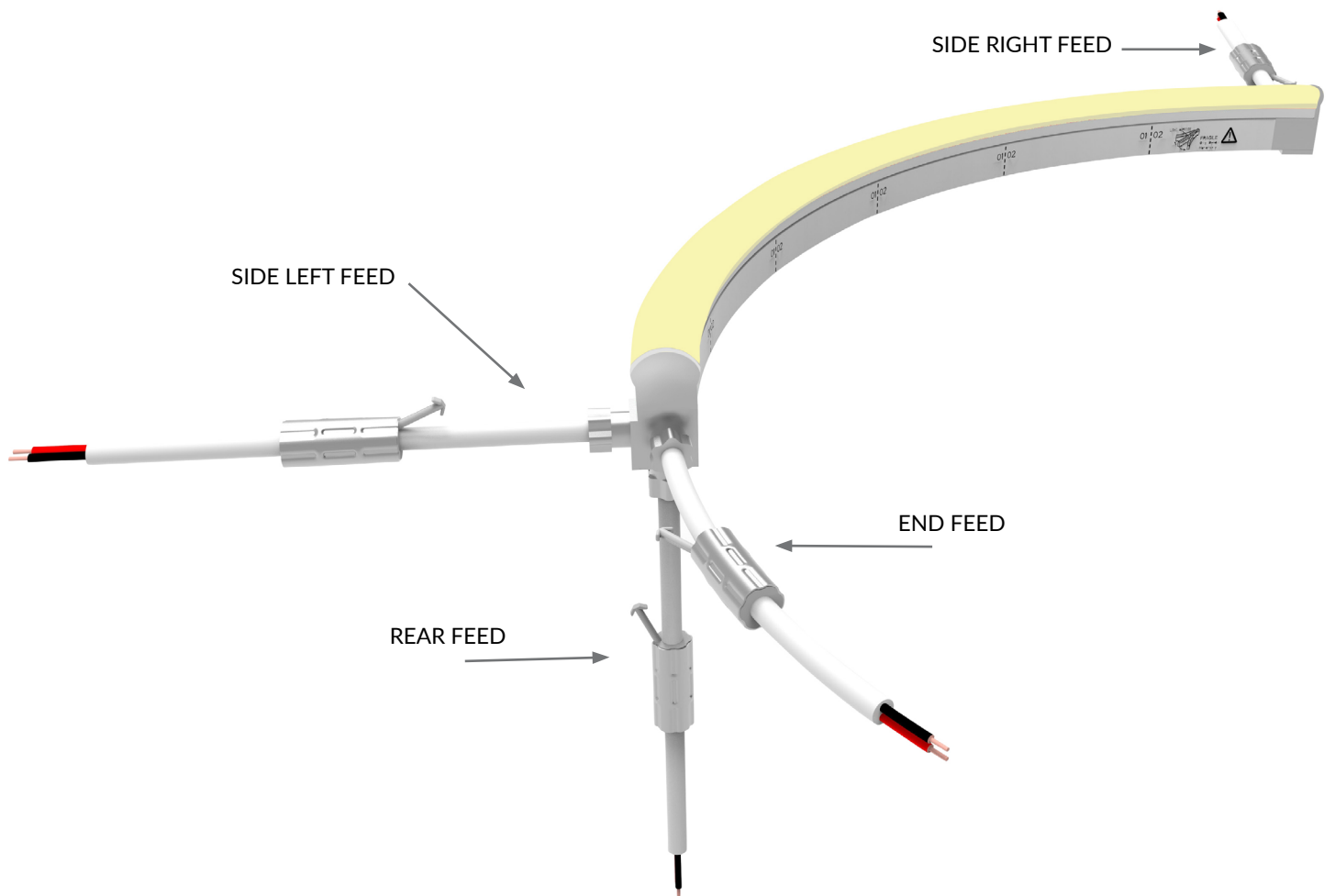
# STATIC WHITE LED NEON - HIGH TEMP. - 24V

Dome Profile / Side Bending / Silicone

## ORIENTATION & MINIMUM BEND DIAMETER



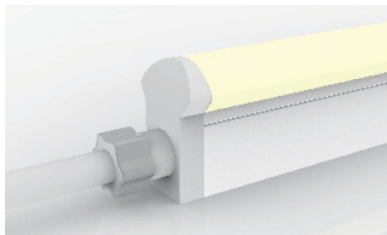
## POWER FEED ORIENTATION GUIDE



# STATIC WHITE LED NEON - HIGH TEMP. - 24V

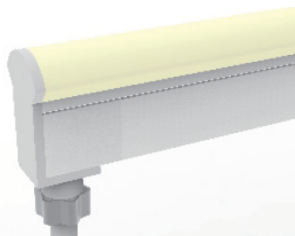
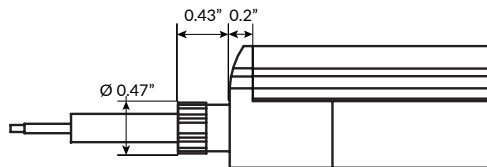
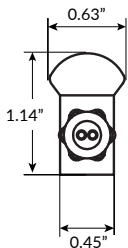
Dome Profile / Side Bending / Silicone

## POWER FEED & TERMINATION OPTIONS (IP68)



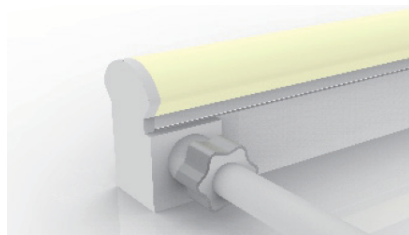
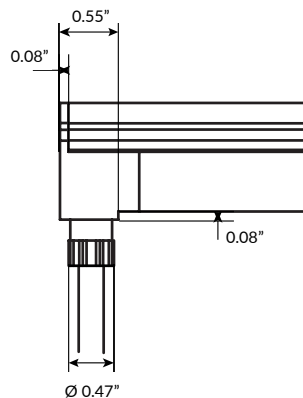
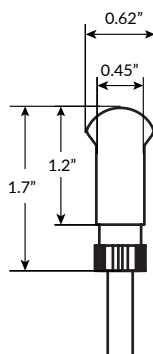
End Power Feed

SERIES	LENGTH
LLI-ND-68-PWR2-EF	39IN 118IN 196IN 393IN



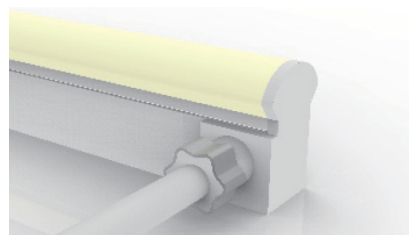
Rear Power Feed

SERIES	LENGTH
LLI-ND-68-PWR2-RF	39IN 118IN 196IN 393IN



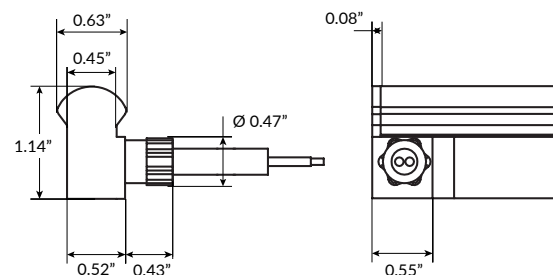
Side Right Power Feed

SERIES	SIDE	LENGTH
LLI-ND-68-PWR2	SR	39IN 118IN 196IN 393IN



Side Left Power Feed

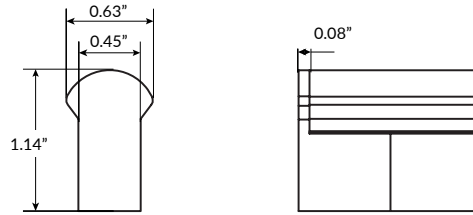
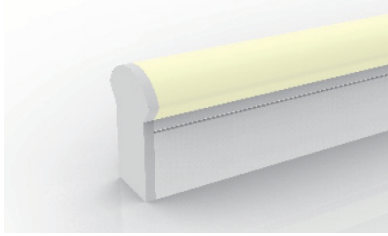
SERIES	SIDE	LENGTH
LLI-ND-68-PWR2	SL	39IN 118IN 196IN 393IN



# STATIC WHITE LED NEON - HIGH TEMP. - 24V

Dome Profile / Side Bending / Silicone

## POWER FEED & TERMINATION OPTIONS (IP68)



End Cap

SERIES

LLI-ND-68-EC



Jumper Power Connector (maximum 4 per run)

SERIES

LLI-ND-68-CON2

SIDE LENGTH (L)

SR	12IN
SL	39IN
EF	118IN
RF	196IN
	393IN



# STATIC WHITE LED NEON - HIGH TEMP. - 24V

Dome Profile / Side Bending / Silicone

## OVERALL LENGTH / CUT POINT GUIDE

Dimension tolerance of  $\pm 1/8"$ . Measurements listed below apply to Side Feed and Rear Feed Neon only. Add 1" to measurements below for End Feed Neon. Measurements below do not include area required for routing power wire. Add 1" distance to layout to account for routing end feed power wire. This product expands and contracts in varying ambient temperatures. If butting Neon end-to-end, add 1/2" to 1" gap between sections for expansion.

6.8"	10.1"	13.4"	16.7"	20.0"	23.2"	26.5"	29.8"	33.1"	36.4"	39.6"	42.9"
46.2"	49.5"	52.8"	56.0"	59.3"	62.6"	65.9"	69.2"	72.4"	75.7"	79.0"	82.3"
85.6"	88.8"	92.1"	95.4"	98.7"	102.0"	105.2"	108.5"	111.8"	115.1"	118.4"	121.6"
124.9"	128.2"	131.5"	134.8"	138.0"	141.3"	144.6"	147.9"	151.2"	154.4"	157.7"	161.0"
164.3"	167.6"	170.8"	174.1"	177.4"	180.7"	184.0"	187.2"	190.5"	193.8"	197.1"	200.4"
203.6"	206.9"	210.2"	213.5"	216.8"	220.0"	223.3"	226.6"	229.9"	233.2"	236.4"	239.7"
243.0"	246.3"	249.6"	252.8"	256.1"	259.4"	262.7"	266.0"	269.2"	272.5"	275.8"	279.1"
282.4"	285.6"	288.9"	292.2"	295.5"	298.8"	302.0"	305.3"	308.6"	311.9"	315.2"	318.4"
321.7"	325.0"	328.3"	331.6"	334.8"	338.1"	341.4"	344.7"	348.0"	351.2"	354.5"	357.8"
361.1"	364.4"	367.6"	370.9"	374.2"	377.5"	380.8"	384.0"				

# STATIC WHITE LED NEON - HIGH TEMP. - 24V

Dome Profile / Side Bending / Silicone

## MOUNTING CHANNELS

**NOTE:** Leave a 0.5" to 1" gap between Neon power feed and mounting channel, to avoid undue stress on power feed cables.

### ANTI-CORROSION REINFORCED PLASTIC MOUNTING CHANNEL

Recommended for submersible applications  
Clear plastic



#### Mounting Clip

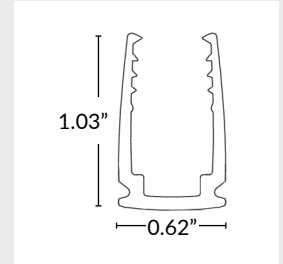
Part Number: LLI-ND-EXT-CP-1.5IN  
Dimensions: 1.5" L x 1.03" H x 0.62" W

#### 20" Mounting Channel

Part Number: LLI-ND-EXT-CP-20IN  
Dimensions: 20" L x 1.03" H x 0.62" W

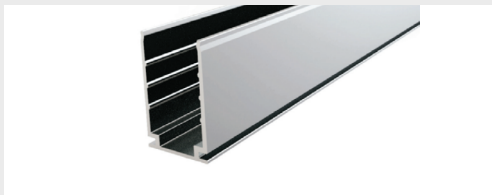
#### 39" Mounting Channel

Part Number: LLI-ND-EXT-CP-39IN  
Dimensions: 39.4" L x 1.03" H x 0.62" W



### ALUMINUM MOUNTING CHANNEL

Silver anodized finish



#### Mounting Clip

Recommended 2 clips every 12"

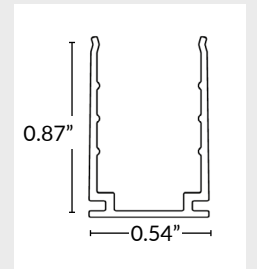
Part Number: LLI-ND-MCL-1.5IN  
Dimensions: 1.5" L x 0.87" H x 0.54" W

#### 20" Mounting Channel

Part Number: LLI-ND-EXT-20IN  
Dimensions: 20" L x 0.87" H x 0.54" W

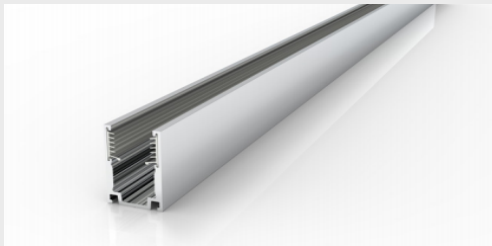
#### 39" Mounting Channel

Part Number: LLI-ND-EXT-39IN  
Dimensions: 39" L x 0.87" H x 0.54" W



### SILICONE GRIP ALUMINUM MOUNTING CHANNEL

Recommended for ceiling and wall applications  
Silver anodized finish



#### Mounting Clip

Recommended 2 clips every 12"

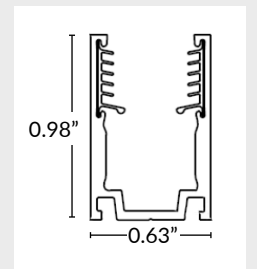
Part Number: LLI-ND-MCL-SG-0.8IN  
Dimensions: 0.80" L x 0.98" H x 0.63" W

#### 20" Mounting Channel

Part Number: LLI-ND-EXT-SG-20IN  
Dimensions: 20" L x 0.98" H x 0.63" W

#### 39" Mounting Channel

Part Number: LLI-ND-EXT-SG-39IN  
Dimensions: 39.4" L x 0.98" H x 0.63" W



### FLEXIBLE STAINLESS STEEL MOUNTING CHANNEL

Silver anodized finish



#### 4" Mounting Channel

Part Number: LLI-ND-EXT-F-4IN  
Dimensions: 4" L x 0.97" H x 0.52" W

#### 12" Mounting Channel

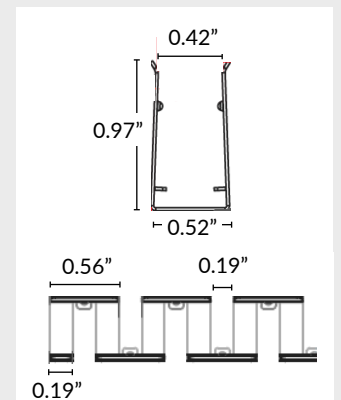
Part Number: LLI-ND-EXT-F-12IN  
Dimensions: 12" L x 0.97" H x 0.52" W

#### 20" Mounting Channel

Part Number: LLI-ND-EXT-F-20IN  
Dimensions: 20" L x 0.97" H x 0.52" W

#### 35" Mounting Channel

Part Number: LLI-ND-EXT-F-35IN  
Dimensions: 35" L x 0.97" H x 0.52" W



# STATIC WHITE LED NEON - HIGH TEMP. - 24V

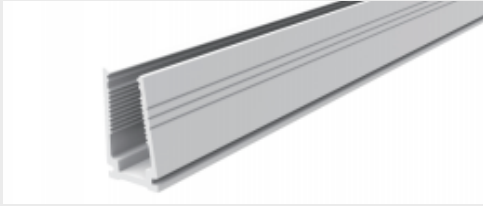
Dome Profile / Side Bending / Silicone

## MOUNTING CHANNELS (CONTINUED)

**NOTE:** Leave a 0.5" to 1" gap between Neon power feed and mounting channel, to avoid undue stress on power feed cables.

### PLASTIC MOUNTING CHANNEL

White finish

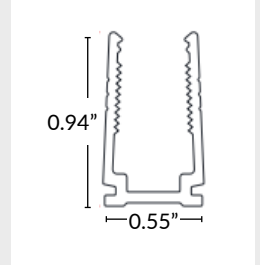


#### 20" Mounting Channel

Part Number: LLI-ND-EXT-P-20IN  
Dimensions: 20" L x 0.94" H x 0.55" W

#### 39" Mounting Channel

Part Number: LLI-ND-EXT-P-39IN  
Dimensions: 39.4" L x 0.94" H x 0.55" W



### RECESSED ALUMINUM MOUNTING CHANNEL

Silver anodized finish



#### 0.8" Mounting Clip

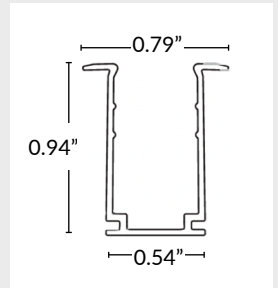
Part Number: LLI-ND-EXT-R-0.8IN  
Dimensions: 0.8" L x 0.94" H x 0.79" W

#### 20" Mounting Channel

Part Number: LLI-ND-EXT-R-20IN  
Dimensions: 20" L x 0.94" H x 0.79" W

#### 39" Mounting Channel

Part Number: LLI-ND-EXT-R-39IN  
Dimensions: 39.4" L x 0.94" H x 0.79" W



### RECESSED ALUMINUM MOUNTING CHANNEL WITH SILICONE GRIP

Recommended for ceiling and wall applications  
Silver anodized finish



#### 0.8" Mounting Clip

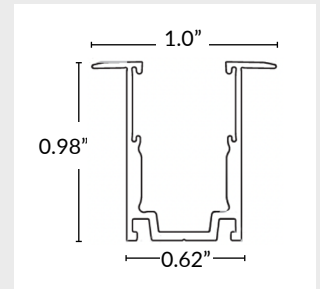
Part Number: LLI-ND-MCL-RSG-0.8IN  
Dimensions: 0.8" L x 0.98" H x 1.0" W

#### 20" Mounting Channel

Part Number: LLI-ND-EXT-RSG-20IN  
Dimensions: 20" L x 0.98" H x 1.0" W

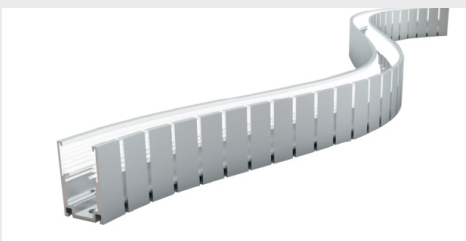
#### 39" Mounting Channel

Part Number: LLI-ND-EXT-RSG-39IN  
Dimensions: 39.4" L x 0.98" H x 1.0" W



### BENDABLE SERRATED ALUMINUM MOUNTING CHANNEL

Silver anodized finish

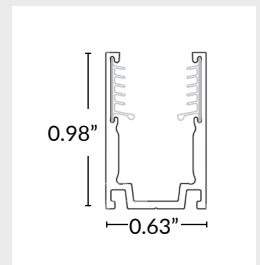


#### 20" Mounting Channel

Part Number: LLI-ND-EXT-BS-20IN  
Dimensions: 20" L x 0.98" H x 0.63" W

#### 39" Mounting Channel

Part Number: LLI-ND-EXT-BS-39IN  
Dimensions: 39.4" L x 0.98" H x 0.63" W



# STATIC WHITE LED NEON - HIGH TEMP. - 24V

Dome Profile / Side Bending / Silicone

## MOUNTING CHANNELS (CONTINUED)

**NOTE:** Leave a 0.5" to 1" gap between Neon power feed and mounting channel, to avoid undue stress on power feed cables.

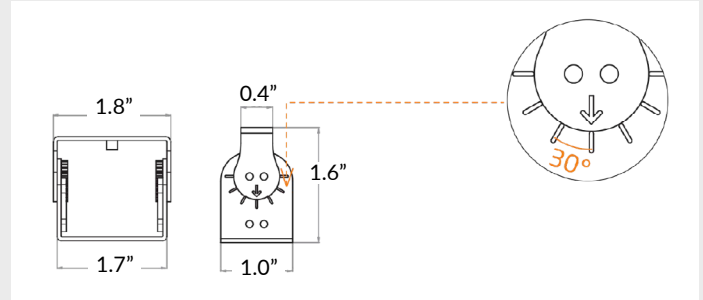
### ADJUSTABLE MOUNTING BRACKET

Recommended 3 brackets for every 39" channel

Adjusts in 15° increments, notches every 30°



Part Number: LLI-ND-BKT-ADJ  
Dimensions: 1" L x 1.6" H x 1.8" W



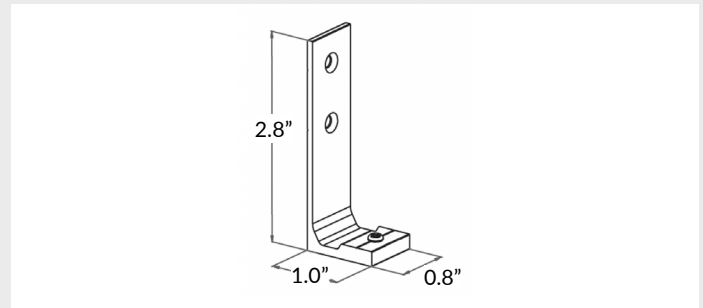
### SIDE MOUNTING BRACKET

Recommended 2 brackets for every 20" or 39" channel

Not compatible with mounting clips



Part Number: LLI-ND-BKT-90D  
Dimensions: 0.8" L x 2.8" H x 1.0" W





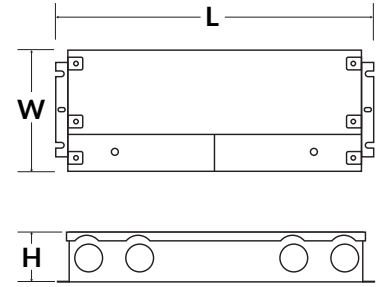
**POWER SUPPLIES** SOLD SEPARATELY

**DIMMABLE ELECTRONIC 0-10V**



Optimal performance dims to 0%.\*

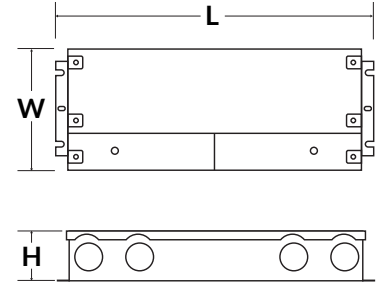
PART NUMBER	CAPACITY	INPUT	OUTPUT	CLASS	LOCATION	L	W	H
LLI-PS-DE010-030W-24V-KO	30W	120V or 277V	24V	CLASS 2	IP66 WET	6.5"	3.6"	1.6"
LLI-PS-DE010-060W-24V-KO	60W	120V or 277V	24V	CLASS 2	IP66 WET	7.4"	3.6"	1.6"
LLI-PS-DE010-096W-24V-KO	96W	120V or 277V	24V	CLASS 2	IP66 WET	8.7"	3.7"	1.7"
LLI-PS-DE010-192W-24V-CL2-KO	2x96W	120V or 277V	24V	CLASS 2	IP66 WET	10.9"	4.3"	1.9"
LLI-PS-DE010-200W-24V-KO	200W	120V or 277V	24V	CLASS 1	IP66 WET	10.2"	4.1"	1.8"
LLI-PS-DE010-288W-24V-CL2-KO	3x96W	120V or 277V	24V	CLASS 2	IP66 WET	11.9"	4.3"	1.9"
LLI-PS-DE010-300W-24V-KO	300W	120V or 277V	24V	CLASS 1	IP66 WET	10.9"	4.3"	1.8"



**NON-DIMMABLE ELECTRONIC**



PART NUMBER	CAPACITY	INPUT	OUTPUT	CLASS	LOCATION	L	W	H
LLI-PS-NDE-030W-24V-KO	30W	100-277V	24V	CLASS 2	IP66 WET	6.5"	3.5"	1.02"
LLI-PS-NDE-060W-24V-KO	60W	100-277V	24V	CLASS 2	IP66 WET	7.4"	3.5"	1.2"
LLI-PS-NDE-096W-24V-KO	96W	100-277V	24V	CLASS 2	IP66 WET	8.7"	3.7"	1.7"
LLI-PS-NDE-192W-24V-CL2-KO	2x96W	100-277V	24V	CLASS 2	IP66 WET	10.9"	4.1"	1.9"
LLI-PS-NDE-200W-24V-KO	200W	100-277V	24V	CLASS 1	IP66 WET	10.3"	4.1"	1.8"
LLI-PS-NDE-288W-24V-CL2-KO	3x96W	100-277V	24V	CLASS 2	IP66 WET	11.9"	4.1"	1.9"
LLI-PS-NDE-300W-24V-KO	300W	100-277V	24V	CLASS 1	IP66 WET	10.9"	4.3"	1.8"

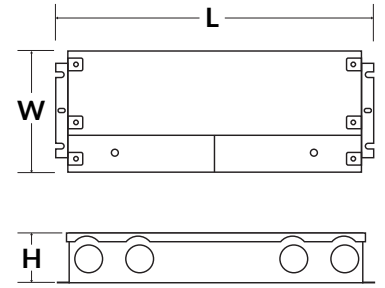


**DIMMABLE ELECTRONIC FLICKER-FREE**



Optimal performance dims to 2-5%.

PART NUMBER	CAPACITY	INPUT	OUTPUT	CLASS	LOCATION	L	W	H
LLI-PS-UDEFF-030W-24V-KO	30W	110-277V	24V	CLASS 2	IP66 WET	6.5"	3.6"	1.0"
LLI-PS-UDEFF-060W-24V-KO	60W	110-277V	24V	CLASS 2	IP66 WET	7.4"	3.6"	1.0"
LLI-PS-UDEFF-096W-24V-KO	96W	110-277V	24V	CLASS 2	IP66 WET	8.7"	3.7"	1.6"
LLI-PS-UDEFF-192W-24V-CL2-KO	2x96W	110-277V	24V	CLASS 2	IP66 WET	10.9"	4.3"	1.9"
LLI-PS-UDEFF-200W-24V-KO	200W	110-277V	24V	CLASS 1	IP66 WET	10.2"	4.1"	1.8"
LLI-PS-UDEFF-288W-24V-CL2-KO	3x96W	110-277V	24V	CLASS 2	IP66 WET	11.9"	4.3"	1.9"
LLI-PS-UDEFF-300W-24V-KO	300W	110-277V	24V	CLASS 1	IP66 WET	11.0"	4.3"	1.8"

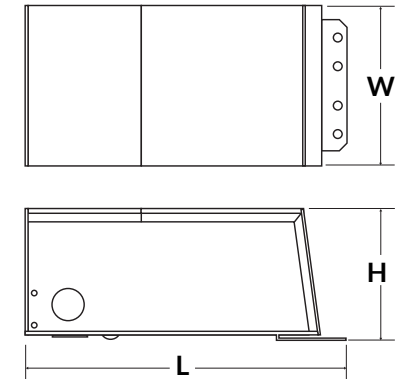


**DIMMABLE MAGNETIC**



Optimal performance dims to 5-10%.\*

PART NUMBER	CAPACITY	INPUT	OUTPUT	CLASS	LOCATION	L	W	H
LLI-PS-DM-020W-24V-KO	20W	120V or 277V	24V	CLASS 2	NEMA 3R WET	7.38"	2.11"	1.60"
LLI-PS-DM-040W-24V-KO	40W	120V or 277V	24V	CLASS 2	NEMA 3R WET	7.38"	2.11"	1.60"
LLI-PS-DM-060W-24V-KO	60W	120V or 277V	24V	CLASS 2	NEMA 3R WET	8.13"	3.93"	1.59"
LLI-PS-DM-100W-24V-KO	100W	120V or 277V	24V	CLASS 2	NEMA 3R WET	8.13"	3.93"	1.59"
LLI-PS-DM-150W-24V-KO	150W	120V or 277V	24V	CLASS 1	NEMA 3R WET	8.79"	4.15"	3.41"
LLI-PS-DM-200W-24V-KO	200W	120V or 277V	24V	CLASS 1	NEMA 3R WET	8.79"	4.15"	3.41"
LLI-PS-DM-300W-24V-KO	300W	120V or 277V	24V	CLASS 1	NEMA 3R WET	8.79"	4.15"	3.41"
LLI-PS-DM-300W-24V-CL2-KO	6 x 50W	120V or 277V	24V	CLASS 2	NEMA 3R WET	10.29"	5.69"	3.43"
LLI-PS-DM-600W-24V-KO	2 x 300W	120V or 277V	24V	CLASS 1	NEMA 3R WET	10.29"	6.79"	4.68"

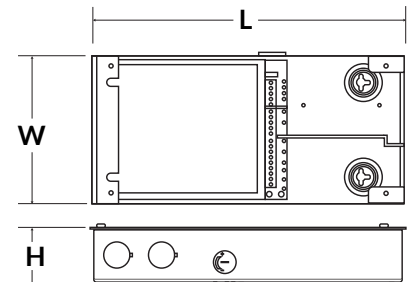


**LUTRON HI-LUME PREMIER 0.1% DIMMABLE ELECTRONIC**



Soft-on, Fade-to-Black, continuous flicker-free dimming from 100% to 0.1.

PART NUMBER	CAPACITY	INPUT	OUTPUT	CLASS	LOCATION	L	W	H
L3D0-96W24V-U	96W	120-277V	24V	CLASS 2	IP20 DRY	10.5"	5.5"	2.0"



\*Performance can be affected by driver loading and dimmer type.