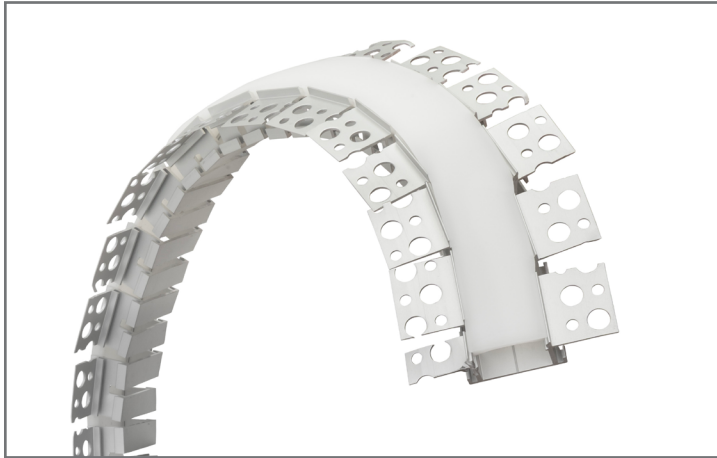




SEAMLESS DUAL BEND 1.0 EXTRUSION



QUICK SPECIFICATIONS

BODY MATERIAL	6063-T5 Aluminum Alloy
LENS MATERIAL	Silicone
MAX. LED TAPE WIDTH	Accommodates tapes up to 0.65" wide
DIMENSIONS	2.76"W x 0.67"H
BEND DIAMETER	15.7" minimum (side bend direction) 11.8" minimum (top bend direction)

DESCRIPTION

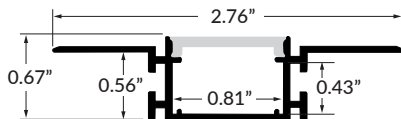
Seamless Dual Bend 1.0 aluminum extrusion is a low-profile and lightweight bendable LED channel and is designed to be plastered into ceilings and drywalls for a seamless finish. It is flexible to use and can be bent left, right, top, or bottom to create curved designs.

FINISH

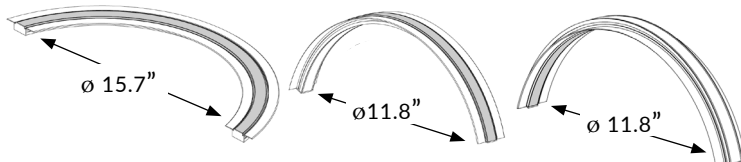
Standard finish is silver anodized.

MOUNTING

Fits a minimum 5/8" wall depth. Gypsum adhesive or mounting adhesive recommended (sold separately).



Do not bend tighter than $\phi 15.7"$ side-to-side
Do not bend tighter than $\phi 11.8"$ top-to-bottom



PART NUMBER BUILDER / ORDERING GUIDE

Example part number: LLI-XR-SD1-SA-F-94IN

SERIES	FINISH	LENS	LENGTH
LLI-XR-SD1	SA	F	
	SA Silver Anodized	F Frosted	(enter custom length in inches, up to 94")
			48IN 48" section
			94IN 94" section

ACCESSORIES



ENDCAP
4 endcaps included; extra endcaps sold separately

LLI-XR-SD1-EC

(2 pieces)